

presenting

the exciting 1978-79

BIG REDS

50¢





Mr. James Akenhead
Superintendent



Mr. Steve Kish
Principal

High School: Sebring Local Mahoning
County
College: Bowling Green University,
Ohio State University
Graduate Work: Bowling Green University,
Kent State University,
Dayton University
Years at BHS: 3
Previous Jobs: Superintendent of Seneca
County Schools
Wife's Name: Charlene
Children: Matt 6

High School: Bridgeport High School
College: West Liberty State College
Graduate School: West Virginia Uni-
versity
Years at BHS: 3
Previous Jobs: English teacher and head
wrestling coach at Mar-
tins Ferry High School
Wife's Name: Kathy
Children: Kelly 3
Steve III 6 months

On behalf of the Bellaire City
School System, we welcome your interest
and support of our school athletic pro-
gram.

We are pleased to offer our stu-
dents the opportunity to participate in
extracurricular activities. We believe
that one factor in life success depends
upon the ability to make plans to obtain
a goal and then to develop ways to adjust
those plans as circumstances dictate.
Programs such as athletics help to devel-
op this ability by making adjustments to
victories and defeats. Through athletics
we strive to support individual dignity,
the work ethic, pride in accomplishment,
and positive relationships.

We hope that the atmosphere here
is friendly and
that you enjoy
this contest.

James Akenhead

On behalf of the faculty and student
body of Bellaire High School, it gives
me great pleasure to welcome you to our
athletic contest this evening. We are
very proud of our academics and, of
course, athletics here at Bellaire High
School. We feel that athletics is an
integral part of a person's overall
growth and we are very proud of our
correlation between athletics and aca-
demics in the Bellaire City School Dis-
trict. We certainly hope that you
have an enjoyable evening this evening,
cheering for your favorite team, and
ask that you return safely to your
home. Thank you for attending our ath-
letic contest today.

Sincerely.

Steve Kish

DEDICATION

3

Each season, the Bellaire High School basketball program tries to honor some one who has been or still is associated with the sport and has helped to make it what it is today. Last year, its first honoree was Coach Claire Cribbs, the Pitt All-American who was known for years as the "Dean of Valley Basketball." This season we are honoring a group of the greatest scorers in the sport at Bellaire High School. These men were recognized for their achievements during the halftime ceremonies of the Bellaire - St. Johns game on December 8, 1978. They are listed below in order of their point totals.

From his sophomore year, LEE PATRONE (class of 1956) was destined for greatness. Lee was the first Bellaire player to break the fifty point barrier (many can still recall his 54 point performance against Martins Ferry in the District finals), the second 1st team All-State candidate, and the first All-American basketball player from Bellaire High School. Lee co-captained the West Virginia University Mountaineer (who had contacted him while still a sophomore in high school) and won MVP honors in the Sugar Bowl. Lee presently teaches at Wintersville and resides in Martins Ferry. Lee scored 1842 points during his three years at Bellaire.

EDDIE BURG (class of 1971) was one of the few athletes to ever letter four years as a varsity performer. The three sport standout was selected to the All-Eastern Ohio and All-OVAC AAA teams both his junior and senior year. Selected as co-captain his senior year, Eddie scored 427 of his 1197 career points. Widely sought after as a baseball pitcher, Eddie signed with the New York Mets the summer after graduation but left pro baseball after a couple of seasons. He presently is employed at Wheeling Steel and resides in Bellaire with his wife.

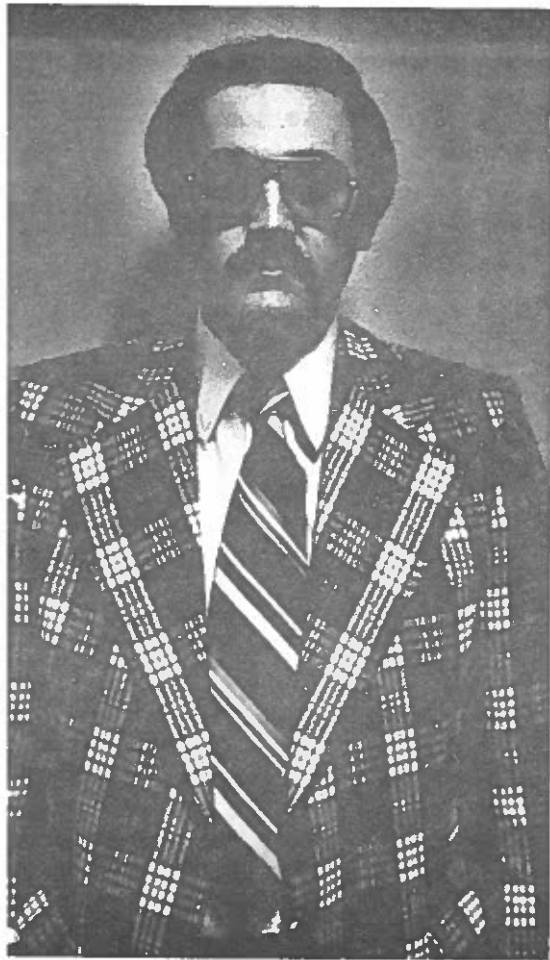
Bellaire's third leading scorer with 1173 points is RICKY LEE (class of 1975). As the captain during his senior year, Ricky was selected 2nd team All-State, co-player of the year in District 12, and captain of both the Intell Big School team and the District team. He is presently the co-captain of the Capital University basketball team where he is working on his fourth letter. Ricky was the first freshman ever to make the All-National Lutheran team as a freshman (he has been honored ever since) and was selected for 1st team honors in the OAC both his sophomore and junior years.

DARRELL EWART (class of 1974) holds the fourth leading scorer's position with 1168 points. As a sophomore, he scored a career high 41 points at Wheeling and rapidly gained attention as one of the Ohio Valley's "super-sophs." He won special mention All-State his senior year and made 1st team All-OVAC both his junior and senior years. Since graduating, Darrell has performed in a number of area tournaments, including the highly respected St. Vincent's Tournament. He is presently a student at West Liberty State College majoring in either business education or physical education and lives at home with his parents.

Even though he is the fifth leading scorer with 1061 points, MIKE SHERWOOD (class of 1967) still holds the game scoring record of 59 points set against St. Johns in 1967. Although his varsity career actually covers only two years, Mike averaged over 25 points each year and captained both the All-Valley and All-Eastern Ohio teams both his junior and senior years. He attended West Virginia University on a football scholarship and still holds over 10 of the 18 records he established there. After working with Don Ault at Bethany for four years, Mike is now the offensive co-ordinator of football at Waynesburg College and resides in Follansbee, West Virginia, with his wife, Pam.

For those future basketball players in the grade schools who have their sights set on someday becoming one of the greats, these are five good examples to follow, for not only did they achieve their goals on the playing floor, but they also achieved higher goals upon graduation from school. Records are made to be broken, but the performances of these five men will live for years to come.

We'd like to thank each of them for being a part of the basketball legend and tradition at Bellaire High School.



Mark Matz

Bellaire High's Head Basketball Coach

A handwritten signature in cursive script that reads "Mark L. Matz". The signature is written in dark ink on a light background.

"Growing up in the state of Ohio, and knowing the caliber of ball played here, I would have to say my greatest satisfaction as a coach was winning the district title last year."

Mark Matz is beginning his third season as head basketball coach at Bellaire High School, and if it is anything like his first two, it should be exciting. Coming to Bellaire in 1976 and finding only two returning lettermen, Matz ended his first year with a 13-9 record and missed the district title by 16 points. In his second year, his squad posted a 13-9 record (including even straight victories), won the OVAC AAA title, and missed a state berth by 22 points.

But winning is nothing new to the twenty-eight year old coach. During his senior year at Bridgeport High School, his basketball and baseball teams came sectional champions, with the diamondmen winning the district also. Upon graduation, he was offered a contract with the New York Mets, but decided that school was more important. He graduated from West Liberty State College where he was a two-year letterman in baseball.

His first coaching job came as head basketball coach of Bishop Donahue in 1974. That year the Bishops compiled an 18-9 record and won the state championship. The following year, his team went 23-1 and won their second straight state championship. That year, Bishop Donahue was ranked as the second best catholic team in the United States.

Matz believes that his assistants have definitely helped him build a framework for solid basketball at BHS. "I believe I have the most dedicated assistants in the area," commented the ex-Bulldog. "From the eighth grade to the varsity, we stress the concept of teamwork above talent, and I feel that the results are worth it." And to date, who can argue with that?

Coach Matz resides in St. Clairsville with his wife, Anita, and two sons: Bobby, a junior, and Scott, a second grader.

presenting the BIG REDS for '79



1978-1979 VARSITY BASKETBALL TEAM - Kneeling: Head Coach Mark Matz. Standing: Doc Adams, Curtis Feller, Junior Gray, Jerry Kinney, Chuck Mehl, Dean Lipperman, Bill Mehl (co-captain), Bill Wiley, JoJo Campbell (co-captain), Dickie Sketel, Mark Lenik, Ron Bumgardner.

*To laugh after victory is nothing
To gloat over conquest is naught
But to pick yourself up when you've
suffered defeat
Is a virtue that can never be taught.
To cheer when you see your team winning
To applaud when the score is with you
Is nothing compared to the team that
can smile
When they're behind by a basket or two.*

BE A GOOD SPORT

A gift of
FLOWERS
costs so little
and means so much!

Strussion & Son

Reds Prep for Season With Hard Practices

If you plan on playing a rough schedule during the regular season, the you might as well practice the same. A the 1978-79 Big Reds certainly undertoo a rigorous pre-season scrimmage schedul On December 4, they traveled to Zanesvi to meet the always powerful Blue Devils Hampered by poor shooting and the inabi lity to establish any offensive pattern, the Reds came out winning 68-60 over fo quarters and losing 109-115 after seven They then travelled to Marietta for a t angular with Chillicothe and Marietta. With all players active except Chuck Me who was nursing a broken rib, the Reds defeated the Tigers 75-46 over four quarters and squeaked by Chillicothe 34 29 over three periods. They closed out their scrimmage schedule with neighbor ing Bridgeport on November 24, and with some confidence, turned their attention to preparing for their opening contest with Shadyside.

'78 Squad Gives Fans A Taste of Tourneys

It took close to seventy years, several coaches, and hundreds of players to do it, but it finally had to happen. After seeing their hopes stopped two years in a row at Steubenville, the third time was a charm, as the 1977-78 Big Reds captured the first District basketball crown in their colorful history by defeating Tri-Valley, 46-45.

From their overtime opening loss to Shadyside to their final loss to Portsmouth, fans were aware that excitement would be the key word, regardless of the outcome. Ten of their games were won or lost by less than five points. A double overtime loss to Wheeling Park, the first back-to-back win over always powerful Cambridge, the close scare at Wintersville, and eleven straight victories kept the fans coming. And when the final buzzer went off against Tri-Valley, the long wait was worth it.

Led by seniors Brian Dawson (co-captain), Greg Gray (co-captain), Vince Mehl, and John Helms, the '78 squad was a beautiful example of togetherness and its effects. Although Dawson led the team in twelve of nineteen categories, it was the play of each member that helped win the games. Junior Gray's basket at Tri-Valley, Bill Mehl's overtime shot against West Holmes, Helm's steady board play and his 59% floor shooting, Vince Mehl's 86 assists, and unselfish support from the bench all contributed to their success. Put this together with 48% shooting from the floor and 38 rebounds a game, and how could you miss?

If the 1978 season did nothing else, it gave future Big Reds and fans an idea of what it was like to be close to a state title. Even though they had won the first OVAC championship since 1967, the excitement and electricity of tournaments meant more. And that, in itself, could well be the most important in-

Good Luck Denise
 Annie RAT
 from
 Belinda
 Lisa
 Dawnna
 "THE STATS"

Spotlight Spotlight Spotlight Spotlight Spotlight

3242 Belmont 676-3451

MAKE OUR QUARTERS—YOUR HEADQUARTERS



SWAN'S SPORT SHOP

for all your sporting needs

Spotlight Spotlight Spotlight Spotlight Spotlight

Wishing You A Winning Year

TCI Building Supplies

NEFFS, OHIO

676-8506



BASKETBALL

When You Have The Time For Quality

LET US design YOUR IDEAS and PRINT THEM



676-3778

BHS Publications' Office

Bellaire High Reserve Team



1978-1979 RESERVE TEAM - Row 1: Jim Sketel, Brian Hochstrasser, Craig Jenkins, Kevin LoCoco, Rick Krupnik, Ron Bumgardner, Doug Lipperman (mgr.). Row 2: Coach Gene Ammirante, Smoker Liberati, Louie Fisher, David Gray, Jerry Kinney, Roger Latham, Damon Anderson, Richard Vannelle, Freshmen coach Kim Clifford.



"At this stage of my life, I'm unsatisfied with my experience in basketball. I want to learn more."

Gene Ammirante came to Bellaire High School three years ago from Bishop Donahue to coach reserve basketball. Although serving as a varsity football assistant over there, and coaching junior high football at BHS, the ex-Wheeling Central product favors basketball over football because "I just like the sport more."

Of all the games he coached at BHS, his biggest wins were when his reserves defeated an undefeated Martins Ferry team on their home court (after being down 14 points) and soundly defeating Wheeling Park reserves on their home floor. "The greatest satisfaction I personally receive from coaching is when a player comes up to me after a game and thanks me for the help I gave him. That's when I feel that coaching is worthwhile."

Coach Ammirante works to instill the basic fundamentals in each of his players, but doesn't stop there. "It is important that players on this level also learn sportsmanship and discipline."

676 · 5694

BANQUETS...

LARGE PARTIES...

WEDDINGS

3223 Belmont St.

House of Catering

We Support Bellaire High Basketball

BELLAIRE TIRE

676 · 0717

3564 Noble Street



★ Big Reds' Record Holders ★

CATEGORY	GAME INDIVIDUAL	GAME TEAM	SEASON INDIVIDUAL	SEASON TEAM	CAREER INDIVIDUAL
Field Goal Attempts	34 Darrell Ewart	105 River Local	492 Ricky Lee	1629 1975-76	993 Ricky Lee
Field Goals	18 D. Ewart R. Lee	45 River Local	226 Ricky Lee	721 1977-78	498 Ricky Lee
Field Goal %	100% (3-3) V. Mehl	62% (24-39) Whg. Cen.	61% Frank Sabatino	48% 1977-78	50% (498-993) R. Lee
Free Throw Attempts	17 Brian Dawson	53 Triadelphia	171 Brian Dawson	454 1976-77	247 Darrell Ewart
Free Throws	14 Howard Seabright	30 Triadelphia	102 Brian Dawson	264 1977-78	179 Darrell Ewart
Free Throws %	100% (8-8) R. Lee	91% (20-22) R. Local	81% (81-100) D. Ewart	59% 1977-78	72% (179-247) D. Ewart
Points	59 Mike Sherwood	118 Moundsville St. Johns	767 Lee Patrone	1706 1977-78	1842 Lee Patrone
Offensive Rebounds	13 Brian Dawson	34 Barnesville	125 Wayne Chase	465 1975-76	229 Brian Dawson
Defensive Rebounds	13 Brian Dawson	31 Barnesville	180 Brian Dawson	567 1977-78	337 Brian Dawson
Total Rebounds	22 Brian Dawson	65 Barnesville	302 Brian Dawson	942 1975-76	681 Ricky Lee
Steals	6 Vince Mehl	16 Tri-Valley	38 Brian Dawson	189 1976-77 1977-78	77 Brian Dawson
Assists	12 Jim Kinkade	24 John Marshall	110 Nate Price	576 1977-78	148 Vince Mehl
Blocked Shots	7 Brian Dawson	10 Cambridge	30 Brian Dawson	94 1977-78	52 Brian Dawson
Caused Jump Ball	3 D. Lipperman J. Gray	6 Buckeye South	23 Kevin Roseberry	80 1975-76	36 Kevin Roseberry
Average			33.3 Lee Patrone	87.8 1955-56	20.6 Darrell Ewart
Points In A Quarter	17 Darrell Ewart	33 River Local			

Please notify Thomas E. Rataiczak of any corrections in these records. Written evidence must be presented before any changes can be made. Thank you for your interest.

★ Wrestlerettes ★



1978-1979 WRESTLERETTES: Sue Hartline, Renee Frey, Missy Palian (captain), Teal Kostancic, Dana DeLong.

Pride, Efficiency Displayed by The Stats



THE STATS - Front: Lisa Taylor, Deanna Saunders, Denise Piatt. Back: Belinda "Red" Caruth, Lorie Simpson.

One of the more beautiful aspects of Bellaire's basketball program is "The Stats." In the past few years, these girls have become recognized by sports writers and coaches as being extremely efficient. Charting everything from attempts, goals, steals, assists, and turnovers to offensive and defensive rebounds, jump balls, blocked shots, and more, the girls still find time to enthusiastically support the team. Charts are kept on both home and away teams.

"I think the greatest part of these girls is their enthusiasm," stated Mr. Thomas E. Rataiczak, who has been in charge of "The Stats" since 1974. "From attending scrimmage games to staying after the games to total statistics, you won't find a more loyal group anywhere in the Valley."

Save·Rite Pharmacy

3235 Belmont

Cosmetics

Prescriptions

Russell Stover
candy

676·3433



BELMONT FEDERAL SAVINGS & LOAN ASSOCIATION

Bellaire

Powhatan

St. Clairsville

doesn't
monkey
around
with loans

WHY
SHOULD
YOU ?



FRESHMEN BASKETBALL TEAM - Robert Dierkes, James Wesley, Rick Shimble, Alan Putinsky, John Dyer, Bill Kahl, Paul DePaulis, Bill Vinka, Kevin Pitts, Mike McNabb, John Bauknecht, Todd Fitch, Coach Kim Clifford.

Fundamentals Stressed For Freshmen Squad

"The freshmen at Bellaire always have some talent, and this year is no exception," stated freshmen coach Kim Clifford as he prepared to begin his third season. "I believe that my most important job as the freshmen coach is to thoroughly instill a simple concept of fundamentals. I really don't worry about many offenses, as I think these can be stressed in later years."

Is a feeder system really that important? "I remember when Wellsville was undefeated several years ago. Not only did they have an undefeated varsity, they also had an undefeated reserve, freshmen, and eighth grade team. It's like a disease. If you really want to develop a program, it must begin on this level."

Kim not only works with the freshmen but also assists as the varsity assistant. He is married to the former Penny Gentile and resides in Bellaire.





Lettermen Form Strong Nucleus

RETURNING LETTERMEN: JoJo Campbell (co-captain), Junior Gray, Dean Lipperman, Bill Mehl (co-captain).

Although only a one-year varsity performer and letterman, Co-captain Bill Mehl made his presence known last year as a qualified and cool replacement in the front line. Unaffected by pressure, Mehl shot 49% from the floor (21/43) and 56% from the line (9/16). Appearing in 15 games, the lanky senior pulled in 10 offensive rebounds and 25 defensive rebounds, while blocking 3 shots and making 7 steals. He was also credited with 5 assists and 51 points, including the basket at Athens against West Holmes that sent the game into overtime.

A two-year performer and one-year letterman, Co-captain JoJo Campbell is the man who loves the zone. Shooting 42% from the floor last season (51/121), the versatile athlete broke many zone defenses with his fine outside shooting. Scoring 117 points for a 5.1 point average, Campbell was also credited with 32 assists. On the charity stripe, he found the range 50% of the time (15/30). A hustler on defense, Campbell had 18 steals, 6 blocked shots and 7 rebounds.

Junior Gray is the only two-year letterman on the squad. Shooting 40% from the floor as a sophomore (35/88), the exciting ball handler found the hole 52% last year (66/127). In two years, Gray has appeared in 41 games and scored 243 points. The 5th leading rebounder on the team last year, the guard pulled in 66 rebounds as well as giving 66 assists. Gray was credited with 21 steals and is probably remembered for his winning basket against Tri-Valley that gave Bellaire their first District title.

Another two-year performer and one-year letterman is senior Dean Lipperman. A giant on defense, Lipperman pulled in 97 rebounds and blocked 19 shots last year. Shooting 48% from the floor (24/50) and 54% from the line (14/26), "Lip" was credited with 8 steals, drew 3 charging fouls, caused 7 jump balls, and gave up 10 assists on his way to scoring 62 points. Playing in 19 games, he was a great asset to last year's team coming off the bench and not allowing the opponent to gain any ground.

3100 Belmont Street

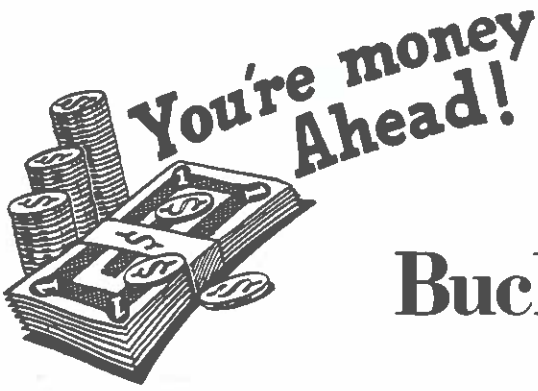
**LINCOLN
RESTAURANT**

**A Great Place to Stop
After Any Game**

**Berman's Family
Shoes**

**We Sell What The
Big Reds Wear**

3227 Belmont Street 676-9441



When You Deal With

Buckeye Savings & Loan Co.

242 32nd Street

676 · 2361

A WISE PERSON GOES TO

CHARLES "BUD" FRY

FOR ALL THEIR INSURANCE

FIRST NATIONAL BANK



676 7040

Good Luck Team

Trigg Construction Builders & Remodelers



NEFFS, OHIO

676 · 9757

GOOD LUCK

Robin '79

Brunna

Brenda '79

MATMEN

RICHARD '79

Cathy '79

Rena

CHRISCINDA

Molly

TALKING TO A STAR

Junior Gray

Years on Varsity
3

Letters
2



Senior Guard

6'2" 170 pounds

Parents:
Mrs. Mary Ann Gray

4524 Franklin Street

	10
FGA	88
FG	35
FG%	40%
FTA	33
FT	21
FT%	64%
Points	91
Assists	20
Steals	14
Rebounds	28
Rejects	0

"I really get off when I make a good move or pass in a game. That is what I'm best at doing."

"We have a lot of pressure on us to win this year. We do have a good team and should be strong. If we have no superstars, we can go to state."

"I feel I can still be a leader without being the captain. My advice is valuable."

"It's good playing with your brothers on the same team. You're tight. You know their moves and exactly when they'll be at a critical time."

Since he started varsity as a sophomore, Junior Gray, alias the "Skywalker," has become the crowd pleaser with his unrealistic moves and tremendous leaping ability. It was his basket against Tri-Valley last year that sent the Big Reds to Athens. "I knew the play would work, for it had all night. When I went to the hoop, I knew I had won." The only two-year letterman on the squad, Junior grew up in Gravel High School and has been playing ball since he could remember. Upon graduation, the "Doctor" would like to either attend college or enter into some branch of the mil-



Bellaire

BIG REDS

MARK MATZ, Head Coach
 GENE AMMIRANTE, Reserve Coach
 KIM CLIFFORD, Freshmen Coach
 MARK BONAR, Eighth Grade Coach

STEVE KISH, Principal
 FRANK DANADIC, Assistant Principal
 GEORGE KOVALICK, Athletic Director
 RICH MASON, Ticket Director

Jackie Sketel	10	6'0"	140	12
Don Bumgardner	12	5'11"	160	11
Mark Lednik	14	5'11"	150	12
Artis Feller	20	5'10"	155	11
Doug Adams	22	5'10"	150	11
Jo Campbell*	24	6'1"	155	12
Bill Mehl*	30	6'6"	175	12
Junior Gray**	32	6'1"	150	12
Ruck Mehl	34	6'5"	185	11
Bill Wiley	40	6'5"	210	12
Berry Kinney	42	6'1"	165	11
Sean Lipperman*	44	6'7"	185	12

*denotes letters

VARSITY CHEERLEADERS

Debbie Burkhart
 Ricky Buti
 Tony Lancione (captain)
 Natalie Sabatino
 Corina Saunders
 Jane Tomlan

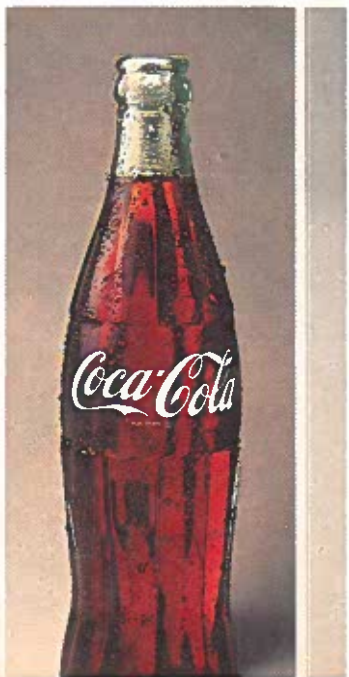
STATISTICIANS

Belinda Caruth
 Lorrie Klempa
 Denise Piatt
 Deanna Saunders
 Lisa Taylor



Coke
Trade-mark ©

DOIN' W





Life to...
YOU LIKE



martins ferry

PURPLE RIDERS

LARRY DUCK, Head Coach
JOE GALA, Reserve Coach
BILL PRATT, Freshmen Coach
VANCE DIEHL, Trainer

ROBERT McNABB, Principal
JOHN YODER, Superintendent
EDMUND JOSEPH, Athletic Director

Keith Vrotsos**	11	5'10"	12
Doug Swearingen	13	6'1½"	12
Rick Douglas	15	5'10"	12
Lloyd Hood*	21	5'10"	12
Wally Wolfe	23	6'0"	12
Jeff Morris	25	6'0"	11
Brian Voytecek*	31	6'1½"	12
Jeff Jones*	33	5'10"	12
Bob Francis*	35	6'0"	12
Daryl Orts*	43	6'0"	12
Jimmy Johnson	45	5'11"	11
John Myers	51	6'1"	11
Jeff Kepreos	53	6'3"	11

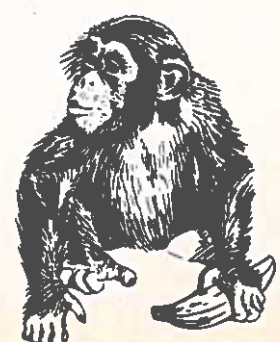
VARSIITY CHEERLEADERS

- Penny Albert
- Carol Boddorf
- Kelly Bodnar
- Anna Palmer
- Teg Voytecek (Capt.)
- Gail Yoder

STATISTICIANS

- Dave Francis
- Bill Woods

THE GRAPE APE



★★ Varsity and Reserve Cheerleaders ★★



VARSITY CHEERLEADERS (kneeling) - Amy Lancione (captain), Jane Tomlan, Natalie Sabatino, Corina Saunders, Sue Burkhart, Vicky Buti. RESERVE CHEERLEADERS (standing) - Tracy Maxwell, Terri Ciofani (captain), Robin Shopper, Darla Price, Leigh Ann Hrdlicka, Missy Warner.

676-9053

DeVendra's
Gulf



37th & Belmont Streets Bellaire

PRESCRIPTIONS



Accurate,
Always!

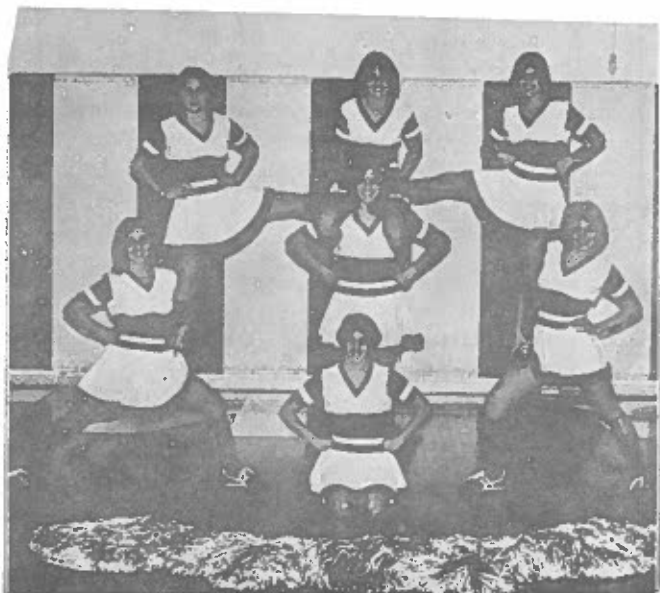
Since
1900

676-0924

JOHN LASH, Pharmacist

Dankworth's Pharmacy

Freshmen Cheerleaders



1978-1979 FRESHMEN CHEERLEADERS: Front: Kim Williams (captain); Row 2: Shelly Davis, Susan LaRuffo, Lori Dumas. Row 3: Mimi Mitchell, Caitin Lancione, Linda Marple.

**WE'RE
NO. 1**

with all your
banking needs

**Farmers & Merchants
National Bank**

**Two Locations
In Bellaire**

**32nd & Union
676-3141**

**426 34th
676-1343**

Athletic Director's Duties Greatly Expanded

"There's more to it than just signing a school to play a game. You have to consider the gate receipts, the facilities the school has to offer, the OVAC rating, and the advantages of placing that school on your schedule," commented Coach George Kovalick on the growth of the athletic director's responsibilities. "The job is much more demanding, and like any other administrative position, requires a great volume of paperwork." And what about the increasing role of girls' athletics? How has that affected the job? "You now have to schedule for 14 sports, including the



Coach Richard Mason, ticket manager; Coach George Kovalick, athletic director.

junior high level. That means tickets, officials, workers, bus transportation, and hundreds of 'little' jobs that seem to always appear. Mr. Mason (ticket manager) and I try to attend every game through its entirety, but sometimes it's just impossible. This year we added girls' track to our program, so that adds a little more to our list of duties. But I enjoy what I'm doing or I wouldn't be here." Richard Mason is assisting Kovalick by handling all ticket sales and running the gates. Athletics is no longer a simple game; today, even on the high school level, it's big business and a lot of work.

88.7 FM

THE VOICE OF

THE BIG REDS



PLAY-BY-PLAY ANNOUNCERS Bob Stewart, Tori Nixon, Rich Exner.

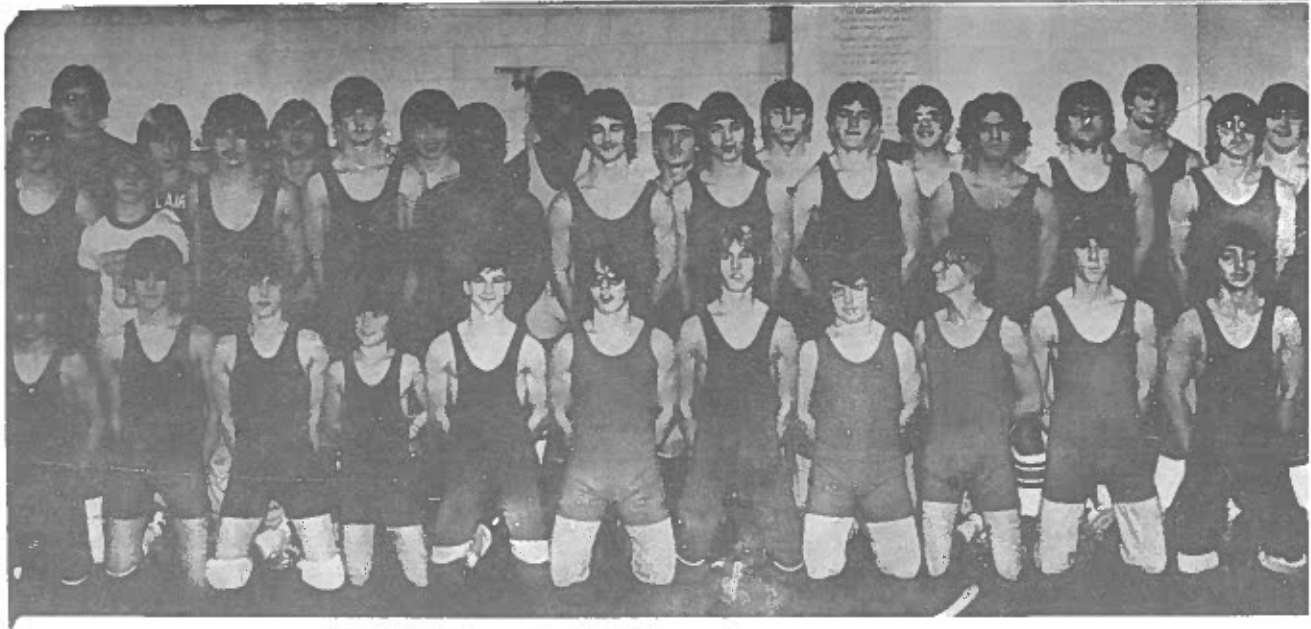
Many of you never listen to it, because you're usually in attendance at the games, but for those fans who can't make it, WBHR, the voice of the Big Reds, takes the play by play action right into their homes. Ending its third year of operation WBHR was a dream come true for Mr. Norman Russell, faculty advisor. "Bud" has been associated with electronics and radios since his high school days. Working part-time with several radio studios in the area, he wondered why his alma mater couldn't become one of the 140 radio stations in the United States having their own high school facilities. On May 25, 1976, WBHR went on the air on 88.7 FM, becoming the first high school radio station in the Ohio Valley (since then, Wheeling Park has joined Bellaire in the broadcasting area) to join the elite. Knowing that Bellaire was a sports-minded community, WBHR began broadcasting football games the following fall. That led to basketball, wrestling, girls' basketball, baseball, and more, and more, and more. "One of our biggest handicaps is time," stated the science teacher. "Unlike a commercial station, a faculty advisor has to be present whenever the studio is broadcasting. There just aren't enough hours in the day to cover all sporting events, and still teach and raise a family." For this reason, WBHR has been forced to curtail some of its broadcasts and, due to increased federal regulations, may cease operations at the end of this year. A great deal of student apathy connected with some vandalism has also assisted in forcing the possible closure. "I felt that I was really making a contribution to the school and community, but I guess the rest of the people never caught my enthusiasm." Then what makes a person continue such a job? "I guess the greatest satisfaction is having kids return to BHS and see that they are continuing what they learned

WBHR

Composite History of Big Reds' Opponents

SCHOOL	NO. OF TIMES MET	WON	LOST	GREATEST WIN	WORSE DEFEAT	MOST POINTS SCORED BY BHS	MOST POINTS SCORED ON BHS
BUCKEYE SOUTH Tiltonsville (1933) Yorkville (1944)	53	25	28	94-37 TILTON. 1955-56	64-34 York 1946-47 56-26 Tilton 1947-48	94 TILTONS. 1955-56	69 TILTON. 1949-50
CAMBRIDGE (1909)	40	15	25	52-32 1961-62	72-18 1917-18	80 1977-78	84 1976-77
JOHN MARSHALL Moundsville (1909) Union (1916) Sherrard (1947)	115	72	43	53-2 MOUNDS. 1910-11	79-30 UNION 1947-48	118 MOUNDS. 1966-67	105 MOUNDS. 1965-66
MARTINS FERRY (1908)	126	59	66 (1 tie)	57-16 1912-1913	87-27 1943-44	104 1968-69	116 1967-68
SHADYSIDE (1915)	77	63	14	78-32 1949-50	67-54 1964-65	106 1968-69	107 1976-77
ST. CLAIRSVILLE (1908)	63	47	16	109-57 1952-53	52-15 1912-13	109 1952-53	79 1975-76
ST. JOHNS (1948)	45	33	12	103-53 1958-59	114-65 1967-68	118 1966-67	122 1967-68
STEBENVILLE (1909)	58	23	35	53-23 1917-18	100-48 1968-69	90 1973-74	100 1968-69
WHEELING CENTRAL (1970)	2	2	0	78-52 1970-71		78 1970-71	52 1970-71
WHEELING PARK Wheeling (1911) Warwood (1920) Triadelphia (1920)	123	50	73	48-18 WHG. 1916-17	61-13 WHG. 1934-35	100 WHG. 1971-72	127 WHG. 1972-73
WINTERSVILLE (1950)	26	14	12	99-65 1976-77	97-67 1967-68	99 1976-77	97 1967-68

Grapplers Eye Third Consecutive OVAC Title



1978-1979 VARSITY WRESTLING SQUAD - Row 1: John Mitchell, Bill Johnson, Ken Carpenter, Don Bronchik, Bill Childers, Joe LoCoco, Brian Strizak (tri-captain), David Dumas, Keith Gulley, Scott Blacker, Tony Miller. Row 2: Bill Wright, Rob Whitney, Mark Prout, John Montag, Artis Johnson, Jeff Regoli (tri-captain), Ed Davis (tri-captain), Chuck Mehlman, Mike DeBlasis, Mike Baldwin, Keith Berberich. Row 3: Mil Campbell, Kent King, Keith LoCoco, John Kaufman, Terry Lowe, Dan Robson, Dave Taylor, Jeff Keyser, Mark Dunlap, Don Weekly.



Head wrestling coach Leonard Chaplinski came to Bellaire High School in 1977 from St. Clairsville. The mat mentor was the first 138-pound OVAC champion ever produced at his alma mater, Wheeling Central, where he graduated in 1964. Entering West Liberty State College upon graduation, he was a four-year conference champion at 160-pounds and qualified for the NAIA tournament three years in a row, finishing 7th his junior year.

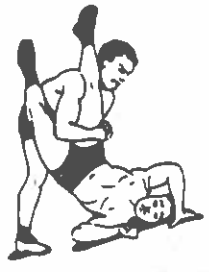
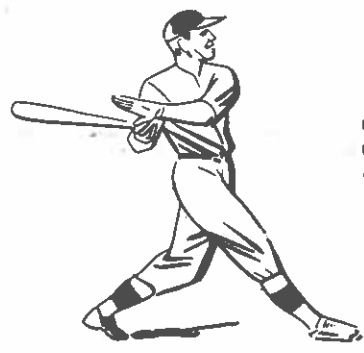
What do you do for an encore after you win the OVAC tournament two years in a row, win the OVAC dual meet title, and consistently send qualifiers to the stat meet in Columbus? That's the problem faced by the Big Reds' wrestling team this season.

Losing 8 of their 13 starters by graduation (mostly all were in the heavy weight classes), the matmen are looking to the lighter classes for their strength. Returning starters Ed Davis, Brian Strizak, Jeff Regoli, Billie Childers, and Tony Miller form the nucleus of the 1978-79 squad.

"I think we have the ability to surprise a lot of people who might think we will be down," commented the ex-Hilltop captain. "We used a lot of people last year who didn't letter, so we do have some good experience. We strongly believe that for every good horse that shows, there should be one in the stable."

Ed Miller will serve as Chaplinski's varsity assistant, while former BHS great Terry Brinker will handle the freshmen. Wheeling Park was dropped from this year's schedule and replaced by St. Clairsville

BIG RED TOUCHDOWN CLUB



TRACK

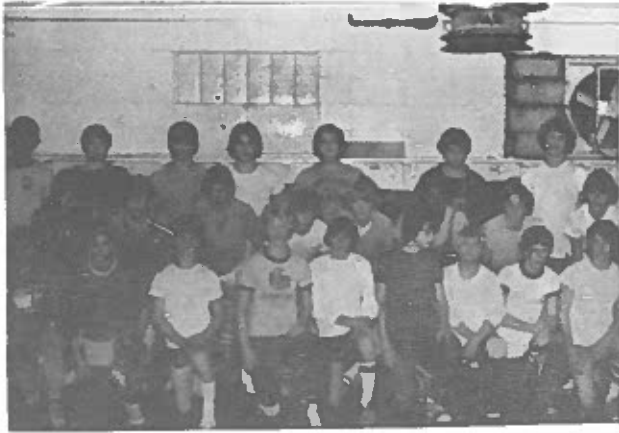
"We Support the Big Reds In All Sports"

THE 1978-79 TOUCHDOWN CLUB OFFICERS



LAIRE TOUCHDOWN CLUB OFFICERS - Seated: John Clark (Treasurer), Ron Marple (Secretary), Sam Tedeschi (President), JoJo Paulette (Vice-President); Standing: Jim [unclear], Roosevelt Henry, Joe Gill, Jim Tekely, Pete Orlando.

Frosh Wrestling Team



FRESHMEN WRESTLING SQUAD - Row 1: Michael Yrlakowski, George Crooks, Ross Johnson, Thomas Clark, Sean McCort, Ralph Hasley, Joe McCutcheon, Greg McMillen, Harry Karchner; Row 2: Tim Johnson, Gio Liberati, Ernest Blasek, Bob Tharp, Joe Lish, Tom Patge, Mark Davolio, Randy Greenwood; Row 3: Jim Johnson, Chris Hill, Terry Donker, Ken Kaufman, John Myers, Todd McCloud, Tom Wallace, Coach Terry Brinker.

Good Luck, Big Red

23

Schwinn

HELL'S
Bike Shop

3501 Guernsey St.

FRIZZI'
MARKET

676-6386

112 2nd Avenue



Walter C. Bauknecht
& Son

FUNERAL HOMES, INC.

OVER A CENTURY OF SERVICE

DIAL 676-1611

Powhatan, O.

441 37th St.

Bellaire, O.

3900 Central Ave.

Shadyside, O.

Ferrick Enters Fourth Year As Girls' Mentor

Entering her third year as head girls' basketball coach, Miss Patricia Sue Ferrick appears optimistic about the upcoming season. "This seems to be the most promising year so far due to the fact that we've had more people out than ever before. Over thirty girls tried out for the squads, with the majority of them being freshmen and sophomores. We are starting to develop more interest in the girls' sports." Susie Clark, working on her third letter, heads the list of returnees, along with Misty Kennedy, Kim Roseberry, and Connie Hibbitts, all who return with one year's playing experience. "One of the most satisfying aspects of this job," commented the ex-Big Red who played her ball under Miss Lucille Fitch, "is getting to know the kids better and watching them apply the fundamentals you have taught them in practice." Ferrick will be assisted this year again by Mr. Lige Ostrander, who enters his second year as her assistant.

Head girls' basketball coach Pat Ferrick and reserve coach Lige Ostrander.



Girls' Basketball Squads Optimistic for Season



1978-1979 GIRLS' VARSITY AND RESERVE BASKETBALL TEAMS - Kneeling (Reserves): Cheryl Fry, Leila Wiggins, Kathy Goodson, Brenda Maupin, Gina DeBlasis, Lori Klaas, Dorothy Maupin, Jerri Rhodes. Standing (Varsity): Miss Pat Ferrick (Varsity Coach), Susie Clark (co-captain), Fran Dennis, Misty Kennedy, Kim Mokros, Kim Roseberry, Janet Richardson, June Nelson, Connie Hibbitts (co-captain), Mr. Lige Ostrander (Reserve coach).

ood Luck
J. Stolz

marla
Palenick

Luid Hudlicka

Redettes
Are
Best!

Kevin
Greenwood

Jill Campbell

Jacquin
Crook

G. John Keller III

Anita Matz

JOE McMahon

Good Luck!
Smoker!

Lori McCloud

Jane + Wise
out of town

Big
Reds!

SEE SEE SEE
SEE SEE SEE
P. FERRICKS

SENT

Dickie + Amie

GOOD LUCK REDS!

Belinda Caruth

Vicky and Doug

Cathy + Victor

Bill Denham

Linda Marinacci

LINDA
DALE
WEDDY
MR. R.

Good Luck!
Chuck! B

T
C.

Sue Burkhardt

O.K.

melinda
and Tom
Love

You,
WALTER
K O S

Barbara + Kathleen

Ellen Tubely

Paula

We

Lucille
Gitch

Good Luck!
at work!

Corina
+
Jogo

Cheryl + Rory

LISA
Taylor
KELLY
AND
RENEE

Mrs. "Pat"

See Ruth

When seen say hi

see you soon

Gymnasium Takes On New Look

Front: Belinda Caruth;
Back: Shari Caruth,
Athena Caruth.



Bellaire High School built its reputation in a crackerbox gym with drab surroundings. No one can argue the fact that outstanding athletes made their name on this little floor -- Patrone, Coyne, Sherwood, Edwards, Miles, and a host of others can prove that point.

But it doesn't hurt to have a nice gym either! And this year's squad is playing in the most beautiful gym in Bellaire High's history, and one of the nicest in the Ohio Valley. It all started in the summer of 1976, when Athena Caruth (class of 1976) volunteered to paint the 12' Indianhead on the west wall of the building. Assisted by her sister, Belinda (class of 1980), Amy Tarbet (class of 1977), and Tom Rataiczak, a teacher at the school, it took some ninety-seven hours and gallons of paint to complete the first step. Although it dressed the gym up considerably, something was still missing.

Then this past summer, the Athletic Board decided to refinish the floor. With the enthusiastic help of assistant coach Gene Ammirante and Jim Murray, a local official, the gym floor was stripped down to bare wood. But before the finish coats of sealer could be applied, the paint crew moved in. Getting the chance to duplicate her sister's feat of two years ago, Belinda designed and laid out the existing gym floor. Assisted by her sister, Shari (class of 1981), and Rataiczak, the end zones were lettered, the lanes and boundaries painted, and two Indianheads applied.

This, in itself, would have been enough, but it didn't stop here. Located on the south wall of the lobby is a record board containing all of the basketball records for BHS. These records were researched and compiled by Vince Mehl and Greg Gray last year. The board was built by Z. E. Rataiczak, a former Industrial Arts teacher at Bellaire High, and lettered by Belinda. It serves as a history for basketball buffs and past players and gives future players something to set their goals and strive for.

The Bellaire basketball program would like to thank all those who helped to make the gym as beautiful as it is, especially the Caruth family. Without their time and talents, this would just be another gym. We only hope that you, the fans, enjoy it and respect it for years to come.

HEIL'S
FURNITURE APPLIANCES

3265 Belmont Street

676-1073



Tom Rataiczak has been associated with Bellaire basketball for the past six years. Although he served as freshmen coach for two years, his interest in records and statistics proved greater. In 1974, Rataiczak began the idea of stat girls at BHS. Since then, the girls have become one of the most efficient groups in the Ohio Valley. A teacher at Bellaire since 1968, Rataiczak was honored by being chosen official scorer at the first OVAC All-star classic last June.

THANK

*mrs. gene ammirante
mrs. mark bonar
mrs. terry brinker
mrs. len chaplinski
mrs. kim clifford
mrs. mark matz
mrs. ed miller
mrs. tom rataiczak*

for your patience

YOU

**a
SPECIAL
THANKS**

**to
Coach Tim Vermillion
and
His Graphics
Art Classes**

**For Printing
This Program**



Since he came to Bellaire High School in 1974, Mr. R. Lynn Schafer has served the basketball program as the official timer. A graduate of Columbus Grove High School where he played ball for three years, Schafer attended Ohio Northern University and St. Francis University before taking a band directing job in Spencerville, Ohio. His enjoyment of

28 Help Keep Winter Sports Great at Bellaire



DECEMBER

5	Shadyside	A	BB
8	St. Johns	H	BB
11	Linsly	A	FBB
	Wintersville	A	GBB
12	Martins Ferry	A	BB
13	River Local	H	FBB
	Martins Ferry	H	W
16	River Local	A	W
	Cadiz	H	GBB
18	Bridgeport	A	FBB
	Martins Ferry	H	GBB
19	Wheeling Park	H	BB
21	Barnesville	H	FBB
22	Steubenville	A	BB

JANUARY

2	John Marshall	A	BB
3	Wintersville	H	W
4	Union Local	A	FBB
	Union Local	H	GBB
5	Wintersville	H	BB
6	St. Clairsville	H	W
8	Shadyside	A	FBB
	River Local	H	GBB
10	Barnesville	H	W
11	St. Clairsville	A	FBB
	Bridgeport	H	GBB
12	Martins Ferry	H	BB
13	Wintersville	H	GBB
	Cambridge	A	BB
	Cambridge	A	W
15	Martins Ferry	H	FBB
17	Linsly	A	W
	River Local	A	GBB

18	St. Johns	H	FE
20	Cambridge	H	E
22	Linsly	H	FE
	Shadyside	H	GE
23	John Marshall	H	E
24	St. Johns	A	GE
25	River Local	A	FE
	OVAC Tournaments	A	
26	St. Johns	A	E
	OVAC Tournaments	A	
27	OVAC Tournaments	A	
29	Bridgeport	H	FE
	Martins Ferry	A	GB

FEBRUARY

1	Barnesville	A	FB
	Union Local	A	GB
2	St. Clairsville	A	B
3	John Marshall-		
	Carrollton	A	
5	Union Local	H	FB
	Buckeye West	A	GB
7	Cadiz	A	
	Barnesville	A	GB
9	Wheeling Central	H	B
10	Wintersville	A	B
	Weirton	H	
12	Bridgeport	A	GB
13	Shadyside	H	B
14	St. Johns	H	
	Cadiz	A	GB
17	St. Clairsville	H	B
19	Steubenville	A	
	St. Johns	H	GB
22	Shadyside	A	GB
23	Buckeye South	A	B

.....

Boys' basketball B
 Boys' basketball (freshmen) FB
 Girls' basketball GB
 Wrestling W

**WE'RE
NO. 1**



Support All the Big Reds' Programs