

ST. JOHNS

1977

BELLAIRE
HIGH SCHOOL

50¢



BASKETBALL

From The Administration



There are many ways to play an athletic contest. At Bellaire, we play hard, we play with pride, and we strive for a spirit of sportsmanship that shows character and support in our athletes and in our fans.

I hope that each person who comes to one of our athletic contests feels that we are meeting our goals and that we have reason to be proud of our

team. *Jim Akershead*

A warm welcome to all Big Reds and visiting fans. Your support is necessary and appreciated. A special thank you to the Big Reds Touchdown Club and band parents for their continued support. Big Reds' pride is a tradition. Your presence here signifies your pride in the Big Reds' basketball program. We hope your visit is an enjoyable one.

Regis Woods

We proudly present the 1977-78 **RJC REDS**



VARSIY BASKETBALL TEAM -- Kneeling: Joe Kolakowski, Vince Mehl, Coach Mark Matz, Brian Dawson, John Helms. Standing: Dickie Sketel, Bill Wiley, Bill Mehl, Dean Lipperman, JoJo Campbell, Junior Gray.

The 1977-78 Reserves



RESERVE TEAM -- Kneeling: S. Liberati, R. Bumgardner, J. Goodson, C. Feller, D. Adams, R. Dierkes. Standing: Coach Gene Ammirante, M. Lednik, R. Latham, G. Donahue, C. Mehl, R. Vannelle, Ass't. Coach Kim Clifford.

* * * * *

The 1977-78 Big Reds reserve team, under second year mentor Gene Ammirante, lacks that much-needed experience. With only 13 players out this year, just five of them played on the freshmen team last year. However, Coach Ammirante has been very pleased with the optimism and willingness to work shown by this group of men. With the reserves playing the same schedule as the varsity, experience in the future should be no problem. The team possesses good talent and must rely on a hustling pressure defense if they want a respectable season. Promising sophomores on this squad are 6'4" center Chuck Mehl, and 5'10" guard Curtis Feller. Another asset to the team could be junior Mark Lednik, who had to sit out the entire season last year in order for a knee injury to heal. The experience gained by this extremely coachable group of athletes this year could be a big boost to the basketball program in the years to come.

BHS Honors Claire Cribbs

Each year, the Bellaire High School basketball program would like to recognize an individual or group who has helped to build Big Reds basketball into what it is today. Since this is the first year, the choice was easy. Coach Claire L. Cribbs and Bellaire High basketball have been synonymous since he came here in 1949. In his 22 years at BHS, he has produced some of the top teams in the Valley, coached some of the finest athletes, and, more important in his eyes, molded hundreds of boys into men.

"Make the most of your God-given talents. Every time that you put on a uniform you have a commitment to improve and learn the fundamentals from which you can meet the toughest opponent eyeball to eyeball.

"My most rewarding experience from coaching not only basketball, but football, baseball, and track, has been the insight it has given me into the lives of hundreds of wonderful athletes - watching them develop into young men who were willing to sacrifice personal recognition for the benefit of the team.

"If a player has learned something from his participation in athletics, I sincerely hope that it has been a genuine appreciation for mankind in general. Dedication plays an important role in all facets of our lives.

Practice and play like champs, and you will be the champion you strive to be.

"To my family, former coaches, fans, athletes, and referees, thanks for the memories. Good luck now and forever more."

Coach C. L. Cribbs

And thank you, Coach Cribbs, for helping to make Big Reds' basketball great.



Returning Lettermen



Returning lettermen usually form the nucleus of any team for the upcoming season. This year's group should do just that. Each one of them has good basketball talent and can contribute to the team in his own way.

Co-captain Brian Dawson is a 6' 2½" forward who has good speed and exceptional jumping ability. He is one of the better scorers around the basket in the Valley this year. Co-captain Greg Gray, a 6' 2" guard, played the point last year. Moving to the wing position this year, it is hoped that he will be in a more effective area where he can display his excellent shooting ability. Vince Mehl, a 6' 1" guard and forward, is the epitome of the word hustle. Displaying excellent speed and rebounding ability, Vince only needs more consistency on defense to make him into a total player.

Junior Gray, a 6' 0" guard, did a fine job as a sophomore last year. Also having excellent speed, he could have an excellent year if he can stay away from nagging injuries and get more consistency on offense. Forward John Helms, 6' 2", possesses good jumping ability and speed. With a little more confidence, John could contribute the valuable points and rebounds this year. At 5' 11", Joe Kolakowski can adjust to any position that he is placed. With his good speed and hustle, Joe should be an asset to this year's squad.

Combine these six lettermen with a very eager group of returning players, and the 1977-78 season should be one of the more exciting ones in Bellaire's records.

THE 1977-78 BIG REDS:

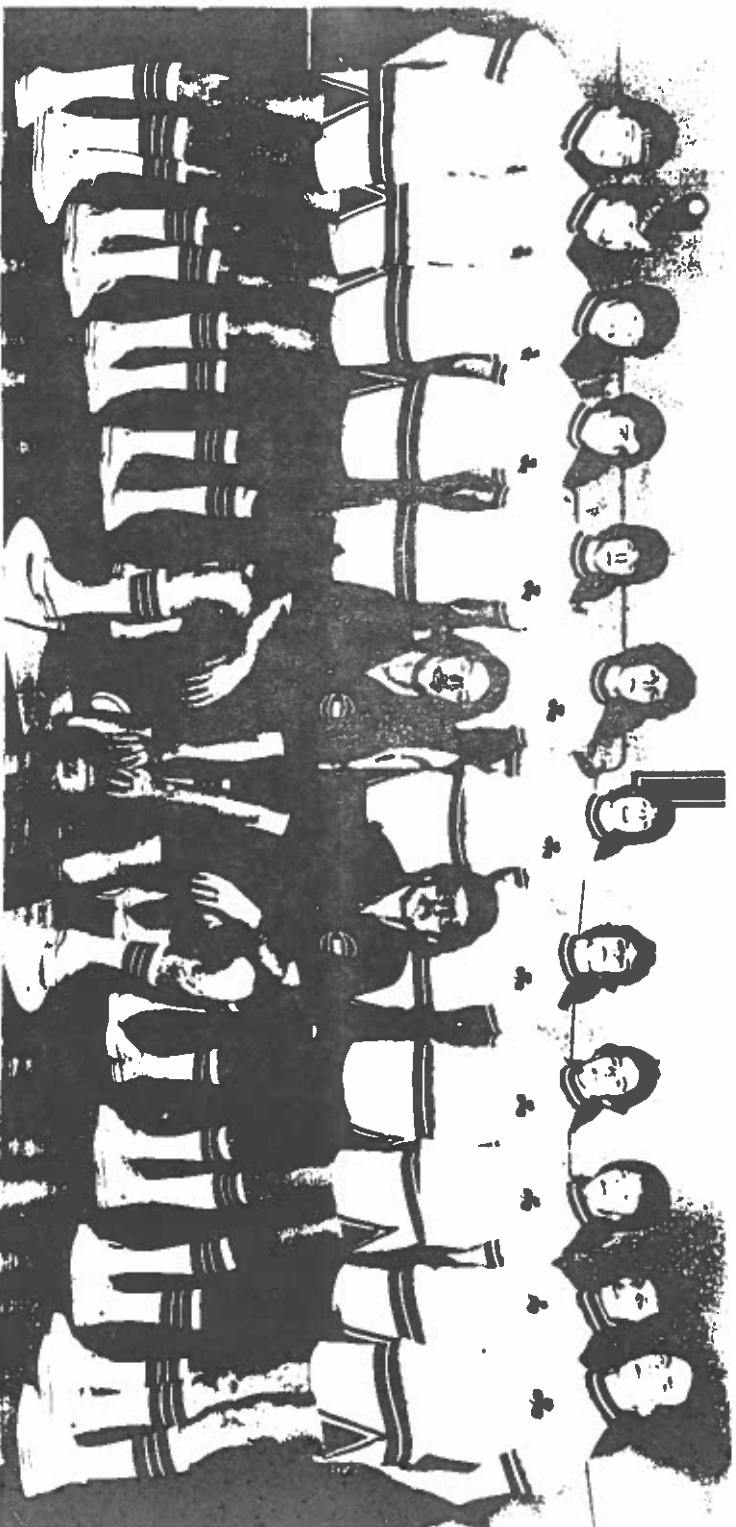
The 1977-78 basketball team of Bellaire will present some extraordinary talent for the upcoming season. The team has six returning lettermen on its squad. Many feel that they will be a strong contender in the OVAC AAA race, due to their overwhelming depth.

Mr. Mark Matz is in his second year as coach of the Bellaire hoop team. Last year, the Big Reds looked very impressive as they compiled a 13-9 record, and also reached the District finals before being ousted by a strong Coshocton team. One of the pre-season goals of this year's team is to make it past the District finals when tournament time arrives. NEVER has a Bellaire team surpassed this goal.

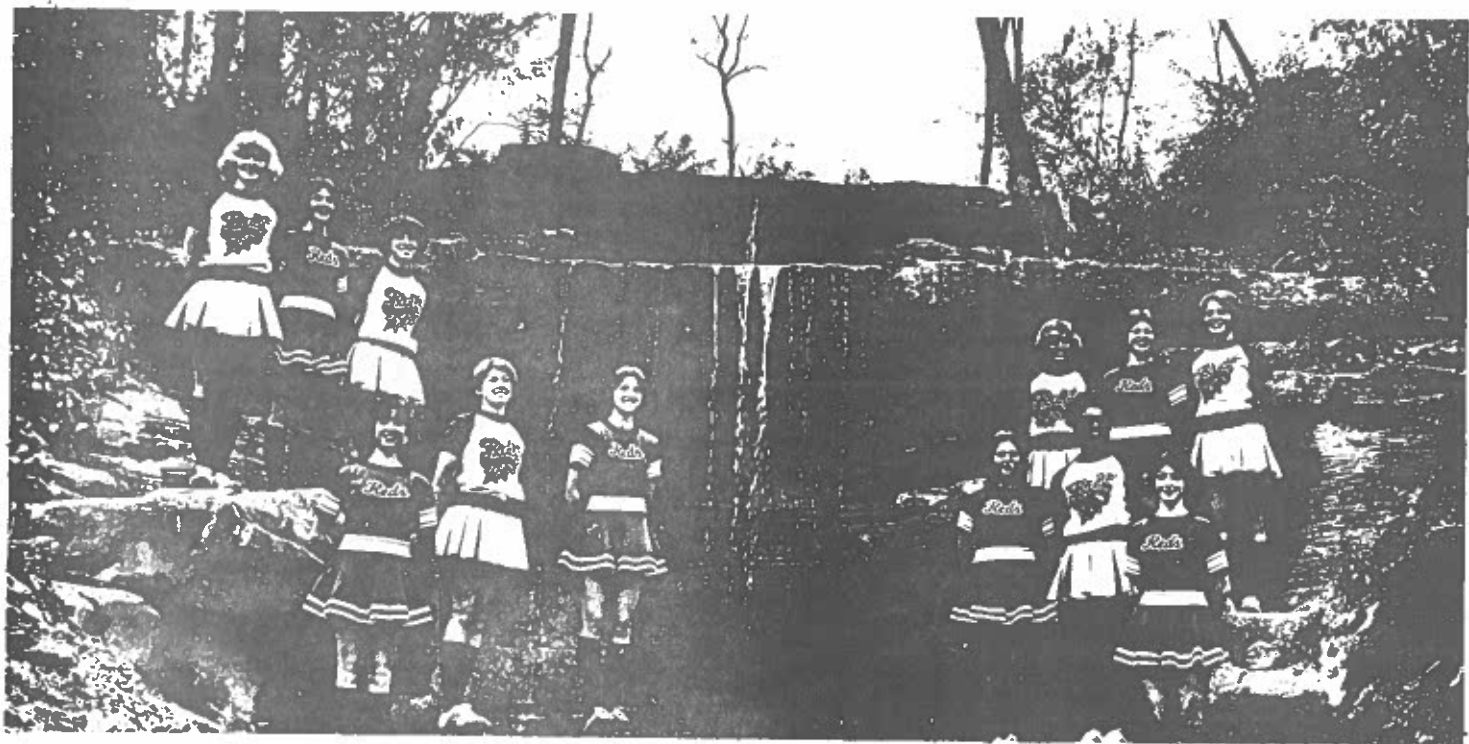
The '77 squad, led by co-captains Brian Dawson and Greg Gray, will also sport a new look this season with all new uniforms and warmups. Another unique feature of this team is found with two pairs of brothers. Greg and Junior Gray and Vince and Bill Mehl will all be seeing considerable action. The Big Reds, adding to an already demanding schedule, picked up Buckeye South and Wheeling Central, and will play Steubenville and Wheeling Park only once.

One thing stood out through last year's season-- win or lose, every game played was exciting down to the final minutes. THE FANS WERE THERE! With them this year, we should be in for some exciting basketball.

WHS Welcomes the Fighting Irish - Good Luck!



NEXT HOME GAME ST. CLAIRSVILLE FRIDAY FEBRUARY 3



1977 - 1978 VARSITY AND RESERVE CHEERLEADERS: Bottom - Leigh Ann Hrdlicka, Shawn Johnson, Terri Ciofani, Cathy Marple, Kim Wilkes, Natalie Sabatino. Top - Susie Beltz (Varsity Captain), Jane Tomlan (Reserve Captain), Carolyn Presutti, Amy Lancione, Vicky Buti, Sue Burkhart.

BIG REDS' COACHING STAFF: Kneeling: Head Coach Mark Matz. Standing: Kim Clifford, freshmen; Gene Ammirante, reserves; Mark Bonar, eighth grade.



Entering my second year at Bellaire, I look at the upcoming season with a great amount of anticipation and enthusiasm. It has all the appearances of being very exciting for the Big Reds' fans, and quite rewarding for the players and coaches.

Last year was one of getting acquainted, putting in a new system, and trying to instill a philosophy which I feel is essential to a successful team - TEAMWORK. Without this ingredient our players are individuals, and when this happens there is no way that we can achieve the goals we have set.

Even as teamwork is important to the ball club itself, it is also important to the entire program. From the coaches to the fans, we must all be aware of what our responsibilities are. As coaches, we must provide the best possible leadership that we can, all phases included. As fans, we must give the team the best, maturist backing we can. Let's not forget that they are only young men, and are susceptible to mistakes. If we magnify their mistakes by our actions in the stands, what kind of an example is that?

Remember, we're all in it together, striving for that same satisfaction of being successful. Keeping our team motto constantly in mind, "Togetherness Makes It Happen," we just might achieve our goals this year.

Mark Matz

* SCHOOL RECORDS *

TEAM SCORING: 118 - 79 St. Johns (1966-67)
118 - 84 Moundsville (1966-67)

INDIVIDUAL SCORING: 59 points by Mike Sherwood
against St. Johns (1966-67)

POINTS SCORED 127 by Wheeling High School
AGAINST BELLAIRE: (1972-73)

MOST POINTS IN A 591 (32.8 average) by
SEASON (18 games): Lee Patrone (1955-56)

MOST CAREER POINTS 1842 by Lee Patrone (1956)
(3 years):

MOST POINTS SCORED 176 (35.2 average) by
IN TOURNAMENT PLAY Lee Patrone (1955-56)
(5 games):

* TOP SCORERS *

1.	Lee Patrone	(1956)	1842
2.	Ed Burgy	(1971)	1197 (4 years)
3.	Darrel Ewart	(1974)	1168
4.	Ricky Lee	(1975)	1141
5.	Mike Sherwood	(1967)	1061

The information listed in the table below, as well as the rest of this program, has been compiled from old yearbooks and rusty memories. Although it is fairly accurate, errors are bound to have crept in. If any fan or visitor has accurate information disputing this material, please contact Bellaire High School so that we might correct our records. We hope you enjoy this program that was assembled by Greg Gray and Vince Mehl, two senior lettermen on this year's squad. Thank you for your support.

THIS PROGRAM WAS PRINTED BY BELLAIRE HIGH GRAPHICS.

SCHOOL	NUMBER OF TIMES MET	WON	LOST	GREATEST WIN	WORSE DEFEAT	MOST POINTS SCORED BY BHS	WIST POINTS SCORED ON BHS
BUCKEYE SOUTH Tiltonsville (1933) Yorkville (1944)	52	24	28	94-37 TILTON. 1955-56	64-34 BHS 1946-47 55-26 TILTON 1947-48	94 TILTONS. 1955-56	69 TILTON. 1949-50
CAMBRIDGE (1909)	38	13	25	52-32 1961-62	72-18 1917-18	77 1959-60	84 1976-77
JOHN MARSHALL Moundsville (1909) Union (1916) Sherrard (1947)	113	70	43	53-2 MOUNDS. 1910-11	79-30 UNION 1947-48	118 MOUNDS. 1966-67	105 MOUNDS. 1965-66
MARTINS FERRY (1908)	124	58	65 (1 tie)	57-16 1912-1913	87-27 1943-44	104 1968-69	116 1967-68
SHADYSIDE (1915)	75	62	13	78-32 1949-50	67-54 1964-65	106 1968-69	107 1976-77
ST. CLAIRSVILLE (1908)	61	45	16	109-57 1952-53	52-15 1912-13	109 1952-53	79 1975-76
ST. JOHNS (1948)	43	32	11	103-53 1958-59	114-65 1967-68	118 1966-67	122 1967-68
STEBENVILLE (1909)	57	22	35	53-23 1917-1918	100-48 1968-69	90 1973-74	100 1968-69
WHEELING CENTRAL (1970)	1	1	0	78-52 1970-71		78 1970-71	52 1970-71
WHEELING PARK Wheeling (1911) Warwood (1920) Triadelphia (1920)	122	50	72	48-18 WHG. 1916-17	61-13 WHG. 1934-35	100 WHG. 1971-72	127 WHG. 1972-73
WINTERSVILLE (1950)	24	12	12	99-65 1976-77	97-67 1967-68	99 1976-77	97 1967-68

WINTER SPORTS SCHEDULE

Dec.	6	Shadyside	H	BB
	9	St. Johns	A	BB
	12	Union Local	H	FBB
	13	Martins Ferry	H	BB
	14	Martins Ferry	A	W
	15	Shadyside	H	FBB
	16	St. Clairsville	A	BB
	17	River	H	W
	19	St. Clairsville	H	FBB
	20	Wheeling Park	A	BB
Jan.	3	John Marshall	H	BB
	4	Wintersville	A	W
	5	Martins Ferry	A	FBB
	6	Wintersville	H	BB
	9	St. Johns	H	FBB
	12	Barnesville	A	W
		Linsly	A	FBB
	13	Martins Ferry	A	BB
	14	Cambridge	H	BB
		Cambridge	H	W
	16	River	H	FBB
	17	Buckeye South	H	BB
	19	Bridgeport	A	FBB
	19-21	OVAC	A	W
	21	Cambridge	A	BB
	23	Barnesville	H	FBB
	24	John Marshall	A	BB
	26	Union Local	A	FBB
	27	St. Johns	H	BB
		Wheeling Park	A	W
	30	Shadyside	A	FBB
Feb.	1	Linsly	A	W
	2	St. Clairsville	A	FBB
	3	St. Clairsville	H	BB
	4	Steubenville	H	BB
		John Marshall-		
		Carrollton	H	W
	6	Martins Ferry	H	FBB
	8	Cadiz	H	W
	9	St. Johns	A	FBB
	10	Wheeling Central	A	BB
	11	Wintersville	A	BB
		Weirton	A	W
	14	Shadyside	A	BB
	15	St. Johns	A	W
	18	Steubenville	H	W

(BB) Basketball (W) Wrestling (FBB) 8th-9th Grade Basketball



GO BIG REDS

From Phil, and the Crew

AT

YOUR PRESCRIPTION STORE IN BELLAIRE

Save Rite Pharmacy

3235 BELMONT ST.

PHONE 676-3433