

Steubenville vs. Bellaire

Saturday, October 7, 1944

B. H. S. Athletic Field Game Called at 3 o'clock

Ten Cents
Per Copy



**EVERY DAY
OF
EVERY YEAR**

**WE ARE
BOOSTERS
OF THE
BIG REDS
YOUR DRUG STORE
DANKWORTH'S**

Bowling

FOR YOUR

Health

**EIGHT
REGULATION LANES**

For Your Pleasure

RESERVATIONS OUR SPECIALTY

Leach Bowling Center

3470 Belmont Street

Phone 9110

DO NOT LOSE YOUR PERSPECTIVE

Sure these are war times. But a day will come when the people of the world will again settle back into the ways of peaceful living. That time, however, will bring added responsibilities and new opportunities. When you think of plans for your future do not forget the advantages of these First National Services.

A Personal Loan	—	For an emergency
A Checking Account	—	For convenience
A Safe Deposit Box	—	For safety
A Savings Account	—	For security

And for those who do not feel the need of a checking account — as a means of remitting funds — we recommend our low cost **FIRST NATIONAL MONEY ORDERS**.

FIRST NATIONAL BANK

IN BELLAIRE

Member Federal Deposit Insurance Corporation

WHAT'S IN THE BAG?

That's a question in the minds of millions of curious Americans as they pass our nation's schools and see rows of onion sacks stuffed to the brim with a strange green pod. Why is this found hanging at our schools? Because every school child has been asked to do his bit in gathering a number one war material, that until recently was considered a pest.

Yes, it's the Lifesaver Weed or milkweed. Now you feel better already, so let's know why it is so important.

When, after Pear Harbor, the Japs took over Java, in their mad rush for expansion, we found ourselves deprived of many valuable products. For instance, we had always imported kapok for various purposes of which one was the Mae West life jacket. Now our stockpile grows small and we must either replenish it or replace it with an equally good product.

Dr. Boris Berkman a Russian who fled from Moscow in 1920 was the man who discovered

the value of the milkweed fiber in his quest for a plant to stop soil erosion. Each long silky fiber attached to the seed is a hollow tube enclosed in a cellulose case. This cellulose is covered with a wax which makes it waterproof. Thus we have a perfect material for life jackets. One pound of milkweed fiber will support fifty pounds in the water.

The milkweed pods open upon drying out in the fall, and the wind distributes the seeds over a wide area. Each seed is attached to a great number of the silken fibers. Our school children and Boy Scouts gather the pods before they open, hang them up to dry outside in bags, and then extract the seeds and fiber which they sell at a good price.

This material is widely found in the United States and Canada and gives us a material that not only equals but betters the qualities of kapok that is now in the hands of the Japs.

Let's all get behind the schools and Boy Scouts in their efforts to gather our number one war material—the lowly milkweed.

DUVALL'S PHARMACY

Where You Meet the Best People
and Get the Most Change Back

THE STORE ON THE CORNER
44th and Noble Streets, Bellaire

ALLAN DICKEY

— All Forms of Insurance —

LEE LEVY

— Tax Consultant —

— — — — —
Offices at
3355 Belmont Street
Phone 65

**BELLAIRE FOOTBALL
SCHEDULE FOR 1944**

September 16
 Bellaire 7 Shadyside 0

September 23
 Bellaire 14 Linsly 6

SEPTEMBER 30
 Bellaire 25 Union 0

STEUBENVILLE CENTRAL CATHOLIC
 October 7 Home

MOUNDSVILLE
 October 14 Home

MARTINS FERRY
 * October 20 Away

NEW PHILADELPHIA
 October 28 Away

OPEN
 November 4 Home

STEUBENVILLE
 November 11 Away

EAST LIVERPOOL
 November 18 Home

WHEELING
 November 30 Away

* Night Game



**ALWAYS GOOD EATS
 SUCH AS
 SPAGHETTI — CHICKEN
 STEAKS — FISH**

**WAITING FOR YOU AT THE
 BELMONT RESTAURANT**



COMPLIMENTS

— OF —

B. & P. BUS CO.



SHOP AT

KERN'S

**WALL PAPER — PAINTS
 CHINA — TOYS — GIFTS**

**Bellaire, Ohio Martins Ferry, Ohio
 Wheeling, W. Va. Charleston, W. Va.**

COMPLIMENTS

OF THE

**J. C. PENNEY
 COMPANY**

F. J. HATHAWAY

General Transfer and Hauling

Phone 656

410 Thirty-third Street

LEWIS BROS.

PRESCRIPTION DRUGGISTS

Cor 44th and Jefferson St.

Bellaire, Ohio

ISALY

After the Game Meet Her at Isaly's

Home Owned and Home Operated

A. E. STIFEL, Prop.

The Elbert Co.

FUNERAL HOME

Phone 52

Bellaire, Ohio

SAY,

**DO YOU KNOW
SOME FOLKS FORGET
TO BUY WAR BONDS?**



MEMBER

Federal Home Loan Bank of Cincinnati
United States Savings and Loan League
Ohio Savings and Loan League
West Virginia Savings and Loan League

Even some of the folks who keep up with all the latest radio and newspaper news and mark lines of military strategy on tablecloths get a little behind on their Bond buying now and then. They are getting used to War Bond booths by now and that first fever of Bond buying that came after Pearl Harbor is running a little low.

They can read a list of casualties or men captured by the Japs and Germans without that impending urge to do something! Yet each time it's a different boy and a different mother to suffer heartaches. So, let's not fall down on the job. Come in and buy not only your pledged 10 percent, but dig down deep and buy an extra War Bond this week.

The BUCKEYE
Savings & Loan Company

If It's Electrical

SEE

CARL J. COCHRAN

Phone 298-J — Bellaire

COMPLIMENTS OF

MAFFE BROTHERS

Studebaker

SALES — SERVICE

Phone 48

1400 Belmont St.

Bellaire, Ohio

WHITE'S
COMMUNITY MARKET

MEATS, GROCERIES
POULTRY AND
VEGETABLES

YOU WILL LIKE OUR SERVICE

Phones 280 - 281

Corner 44th and Noble Streets

Bellaire's Complete Food Market

YOU CAN OWN YOUR HOME

Or Pay Rent All Your Life

**LET THE BELMONT HELP YOU
BECOME A HOME OWNER**

Good Homes can be bought now, or built after the war. You will like our
New Loan Plan — Fair, Simple, Modern.

Come In — We Will be Glad to Talk it Over With You.

**IF YOU PLAN TO BUILD WHEN PEACE COMES,
INVESTIGATE OUR "OWN A HOME CLUB" NOW**

BELMONT FEDERAL
SAVINGS AND LOAN ASSOCIATION

BELLAIRE, OHIO

BELLAIRE HI FOOTBALL PLAYERS



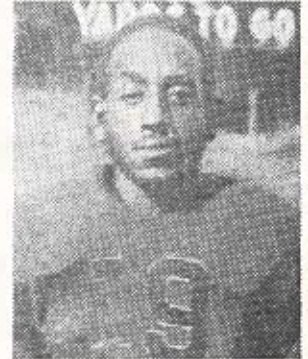
LIBERATI
Guard



CARTWRIGHT
Tackle



HEINRICH
Halfback



WADE
End

CUPAL CASTING CO.

— WE CAST ANYTHING —

Grey Iron, Aluminum, Brass

1441 Belmont St., Bellaire

Phone 155



VOTE FOR
ROSS MICHENER

Democratic Candidate for

CONGRESS

18th Ohio District

THE BIG RED BOOSTERS CLUB

MEMBERSHIP COMMITTEE

Harold Guirile
Ralph Goodwin
John Klempa
Chas. Heathcote

(Incorporated)
BELLAIRE, OHIO

"IT CAN **B** BE DONE"

Chas. Heathcote
Ed. Trisler
Louis "Cy" Welsh
Earl Leiffer
Dave Reed
J. E. Rosser

Headquarters—Third Floor City Building

BELLAIRE'S FOOTBALL TEAM IS UNDER NEW LEADERSHIP

Membership in the Big Red Boosters Club is the best way to co-operate for the success of the team. The regular membership costs two dollars per year.

IS YOUR NAME ON THIS LIST?

Chas. Livorno
Carl Johnson
Frank Pete Hall
Dan Archibald
Archer & Ault
Wm. Columbo
Cy Welsh
D. A. Beveridge
E. A. Burrows
Gordon C. Dix
S. H. Blum
Howard Simpson
Dick Fowkes
Homer Fowkes
Walter Robertson
Joseph P. Scott
Walter Bauknecht
H. P. Rodewig
Homer Carman
F. E. Reinbolt
Stanley Ostasiewski
Henry Johnson
Albert Heil
Frank M. Heinrich
Howard Bippus
Morris Favish
Irving Spero
Books Shoe Co.
J. C. Penny Company
Louis Berman
George Lillikos
John Sidon
Earl Paul
Dan Heatherington, Sr.
Dan Heatherington, Jr.

Joe Mack
Albert De Blasis
Emil Jacobs
Earl Linch
L. L. Cunningham
Ben Pinsky
Chas. Stewart
John McClain
Sam Cicogna
Homer Conner
Herbert Glaser
St. Clair Archer
Carl Koch
J. E. Rosser
Linton Johnson
Harry Pinsky
Joe Civins
T. A. Scott
Maurice Mountain
Guy Dankworth
Ed. Rafferty
Chas. Rosser
Frank Vannelle
Dr. J. F. Wilkinson
Wm. Siddall
J. Earl Green
B & P Bus Co.
Albert Mountain
John Feller
Earl Johnson
Carl Cochran
John Tobin
W. W. Shackelford
Clyde Duffy
J. V. Nelson

Chas. Kahl, Jr.
Nello Proetti
Louis Heinline
Doe Miller
Morlan Chemical Co.
George Swartz
Progressive Print Shop
John Lambros
Joe Valloric
Charles Devenzio
Frank Padula
Marty Connors
Mike Klempa
Ralston Kerr
George Robinson
Harry Herzberg
Hyman Mendelson
Everett Malpeidi
Albert Noice
Martin Lipperman, Sr.
Clark Porter
Lester Ault
A. A. Hack
I. I. Mendelson
Dewey Corbett
Hays Marshall
John Howell
Matz Brewery
E. A. Burrows
Gordon C. Dix
S. H. Blum
HONORARY
MEMBERS
Miss Esther Pinsky
Mrs. Ray Mazelli

COMPLIMENTS
OF

CIVIN BROS.
Automobile Service

Corner 23rd and Belmont
Phone 550

-STOP-

Before and After
The Game

At

H A P ' S

Park by the Park

COMPLIMENTS OF

The Neff Lumber Co.

YARDS AT

NEFFS, OHIO
Phone Bellaire 21

POWHATAN, OHIO
Phone Powhatan 18-R-2

For the Complete Story and Pictures
of Today's Game, Buy and Read

The Times-Leader

Martius Ferry Times

Bellaire Daily Leader

Eastern Ohio's Complete Home Newspaper

A. B. C. CIRCULATION OVER 18,300
I. N. S. AND U. P. WIRE SERVICES

—“Let The Home—Furnish Your Home”—

Furniture—Carpets—Stoves

Shades—Linoleum—Bedding

The Home Co.

Phone 89

3333 Belmont St.

COMPLIMENTS
OF

The
Imperial Ice Cream Co

Wheeling, W. Va.

CLOVERDALE

GRADE A MILK

Pasteurized — You'll Like It

Bellaire 466

Whg. 2860

**THE RODEFER
GLASS COMPANY**

Bellaire, Ohio

Manufacturers of

Pressed and Blown Glassware

To Specification

Established 1877

This Is Your Enemy

ROLL OVER—One pilot in from the South Pacific stresses the fact that Jap fighters usually fly in loose formation and because of this can be spotted from some distance. Too, they have a trick of making a slow roll at intervals. Our pilot believes they do this—which slows down the highly maneuverable Zero very little—so they can see if anything is below them.

He says that their bombers, however, always fly a tight formation no matter what happens. In one case a flight of our P-39's was flashed word that 11 Jap bombers were heading for one of our bases. Our fighters struck at about 12,000 feet and knocked down two. The Japs moved up to fill in the gaps, and they were picked off until only one was left. He landed on one of our strips and was captured.

NO TRACE—In recent raids many Jap planes have not been using tracer bullets. This has made their shooting quite inaccurate, but often our fighter pilots (the ones who are careless about looking around) have not had any warning that they are being attacked until shells from a Jap plane rip through their ships.

JOHN P. VALENT

Fresh Meats of All Kinds - Groceries - Fresh Vegetables - Cigarettes - Tobacco - Candy

4245 Harrison Street
BELLAIRE, OHIO
Phone 569-R

SAM WALKER

INSURANCE OF ALL KINDS

Auto--Fire--Life--Bonds

Phone 970

First National Bank Building
Bellaire, Ohio

WALTER SCOTT SERVICE STATION

GOOD GULF PRODUCTS

Washing and Greasing

Stop in and See Us

Cor. 37th and Belmont

Call Wheeling 1717

For Office Supplies and Equipment

FREE DELIVERY

McGHEE & COMPANY

Corner 14th and Main Sts., Wheeling, W. Va.

PREPARE TODAY

FOR AN ALL-ELECTRIC
HOME OF

TOMORROW

The Bonds You Buy Now
Will Make Your Dreams Come True

Wheeling Electric Co.

MIDDY'S GRILL

WHERE THE
STUDENTS MEET AND EAT

Across from Bellaire High School

JAMES T. GREENLEE

West Bellaire's Complete

FOOD MARKET

Phone 434-M

Archibald Hardware

Dolls and a Complete Line of Toys
at Cut Rate for the Season

3254 Belmont Street

Phone 680

COMPLIMENTS

— OF —

**THE ZWEIG FURNITURE
STORE**

J. L. LINARD

615-16 First National Bank Building

Specialized Service

. . . in . . .

Insurance and Real Estate

Since 1897

YOUR PRESCRIPTION
WILL BE ACCURATELY FILLED AT

McKelvey's Pharmacy

Phones 912—9134

3127 Union Street

Ohio Paint and Glass Co.

WALLPAPERS PAINT GLASS

and

Imperial Candlewick

Phone 765

3374 Belmont Street

Wrong Number?

The Hi-Y Club of Bellaire High School, sponsors of the Football Program, wishes to ask the public to please bear with them at a time when mistakes as to numbers in the program are often beyond control and not due to error.

Athletic equipment is extremely hard to procure during a war, and we do not wish to purchase anything we can get along without if it should in any way deprive a fighting man of the finest equipment we can provide.

The Red and Black jerseys now worn by part of our team have been worn by many boys who are now fighting for us all over the globe.

They would be glad to know that their jersey is still being worn by a Fighting Big Red. You have seen some of these jerseys damaged beyond repair, thus you see the necessity of changing the numbers from week to week. Sometimes these changes are made after the scorecard has gone to press. Please be patient and we will do our best to post all changes in numbers in the next issue. Of course we can not be held accountable for the visitors' numbers since we must print them exactly as they are sent to us.

Thank you kindly,
THE HI-Y CLUB

Bellaire Football Fans are Widely Known for Their Loyal Support of the Big Reds

We Republican Candidates for County Offices would appreciate their support on November 7th

RALPH R. BETTS	REPRESENTATIVE TO THE GENERAL ASSEMBLY
HOWARD W. PLETCHER	COUNTY COMMISSIONER
GEO. M. TAYLOR	COUNTY COMMISSIONER
WILLIAM IDDINGS	PROSECUTING ATTORNEY
LON McGLUMPHY	CLERK OF COURTS
FORD MOORE	SHERIFF
LIN C. GRIFFITH	RECORDER
M. E. HALL	TREASURER
WM. S. SHRIVER	COUNTY ENGINEER

TIME

SATURDAY, OCTOBER 7

OFFICIALS

Boddy, Wheeling
P. Hudacek
Pugh

Steubenville Probable Lineup

50—Maloney	L. E.
55—Leone	L. T.
45—Corsi	L. G.
77—Carinci	C
39—Duff	R. G.
48—Layman	R. T.
61—Bell	R. E.
46—Gryska	Q. B.
29—Davis	R. H.
32—Dugan	L. H.
62—Cortez	F. B.

HEAD COACH—Mac Cara.

ASSISTANT COACH—Joe Rufus.

COLOR OF JERSEYS—Blue.

SCHOOL COLORS—Gold and Blue

STUDENT MANAGERS—Costlow, Gianamore, McCullough, Kukor.

SCORE	1	2	3	4	TOTAL
Steubenville					
Bellaire					



Penalty enforced, incomplete Player illegally in motion Interference

OUT - the signal for

the Pause that Refreshes

**NEXT GAME—
MOUNDSVILLE
NEXT SATURDAY**



Bellaire Probable Lineup

19—Jess Heil	L. E.
17—Miller	L. T.
26—Liberti	L. G.
20—Frizzi	C.
24—Yadrick	R. G.
35—Workman	R. T.
38—Ford (Captain)	L. H.
34—Lovejoy	R. H.
13—Keyser	Q. B.
29—Swartz	F. B.
31—Wade	R. E.

HEAD COACH

James Foti, Carroll University
S. W. Maffeo, Asst. Coach

FACULTY MANAGER

I. R. McCarley, Rio Grande

FACULTY EQUIPMENT MANAGER

Dale Bethel, Ohio University

BAND DIRECTOR

Russell Aukerman, Miami University

DRUM MAJOR—Tony Chirpas

STUDENT MANAGERS

Frank Ripoly Lawrence Rowson Harold Hess
Mario D'Allessandro Gene Gray

BELLAIRE HI CHEER LEADERS

Sophomores:	Shirley Lynn
Ella Given Banker	Mavoureen Hartley
June Mackey	Maxine Andrews
Nancy Callahan	Seniors:
Joan Boone	Gina Snider
Martha Culbertson	Billie Dimmack
Mary Lou Heil	Margie Price
Juniors:	Lois Heatherington
Norma Niedemeyer	Adlena Gentile



1944 Steubenville Football Squad

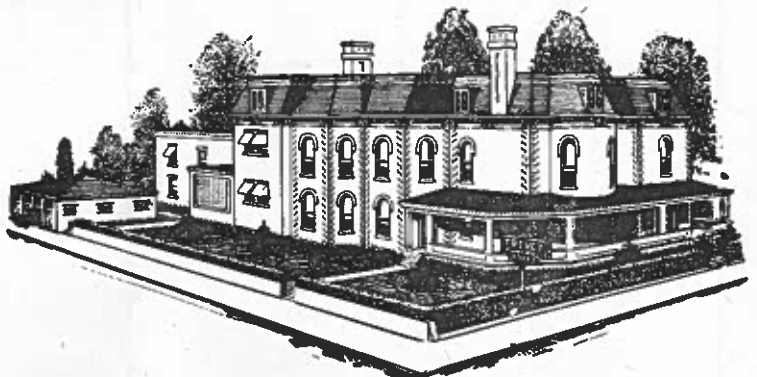
50—Maloney	L. E.
55—Leone	L. T.
45—Corsi	L. G.
77—Carinci	C
39—Duff	R. G.
48—Layman	R. T.
61—Bell	R. E.
46—Gryska	Q. B.
29—Davis	R. H.
62—Cortez	F. B.
32—Dugan	L. H.
30—Griffin	L. E.
71—Albarano	L. T.
70—Murphy	L. G.
52—Bohen	C
66—De Meo	R. G.
76—Cenefman	R. T.
51—Keenen	R. E.
40—Shanley	Q. B.
28—De Stefeno	R. H.
24—Mort	L. H.
26—Zumana	F. B.
43—Owen	L. H.
56—Zapolnik	R. H.
60—De Franko	R. E.
38—Duke	Q. B.

TREVEY'S

Largest and Finest
Funeral Home

Ambulance Service

PHONE 1000



COMPLIMENTS OF

**JOE TERRIS
BARBER SHOP**

Under The Union Savings Bank

Good Luck to the
BIG REDS and JIM

JOE MACK

COMPLIMENTS
OF

W. T. GRANT CO.

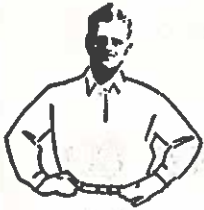
Good Luck to the
BIG REDS

**Archer and Ault
MEN'S SHOP**

CLOTHING AND FURNISHINGS

**BEST WISHES TO COACH FOTI
AND THE BELLAIRE HIGH TEAM
FOR A SUCCESSFUL 1944 SEASON**

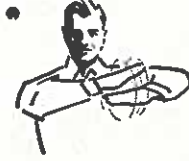
**RAIL & RIVER COAL
COMPANY**



Offside and violation of kickoff formation. (Penalty, 5 yards.)



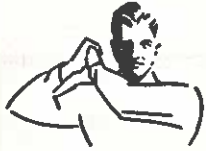
Unsportsmanlike conduct. (Penalty — 15 yards.) For flagrant unsportsmanlike conduct — 15 yard penalty and disqualification.



Illegal formation or position of one or more players. (Penalty — 5 yards from where ball was put in play.)



Player illegally in motion. (Penalty, 5 yards. If from shift or huddle, 15 yards.)



Unnecessary roughness, illegal defensive use of the hands. (Penalty, 15 yards.)



Military salute also used for clipping, followed by striking the back of the knee with hand. (Penalty, 15 yards.) Signal also used for disqualification fouls and for running into or roughing the kicker. In the latter case, the military salute is followed by swinging the leg as though punting.

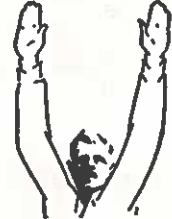
Intentional grounding of forward pass. (Penalty — loss of down and 15 yard penalty from spot of preceding down.)



Crawling, pushing, or helping ball-carrier. (Penalty for helping ball-carrier, 15 yards; otherwise, 5 yards.)



Holding. (Penalty — by offense, 15 yards; by defense, 5 yards.)



Score — touchdown, field goal, or conversion.



Illegal forward pass



Interference with forward pass, pass touching ineligible player, or "screening" pass receiver. (If penalty on offense, 15 yards and loss of down; interference by defense, ball to offense on spot of foul as first down.)



Safety.



Delay of game or extra time-out. (Penalty, 5 yards.)



Penalty refused, incomplete pass, missed field goal or conversion, both sides offside, etc.



Time out.



Illegal touching of kicked ball inside opponent's 10-yard line — touchback.

COMPLIMENTS

— OF —

FOUR BOOSTERS OF THE BIG REDS

H. P. RODEWIG & CO.

HOME FURNISHINGS

3125-3127 Belmont St.

YINGLING'S

COMPLETE FOOD MARKET

Orchid Brand Hams, Bacon,
Lard and Sausage

3273 Belmont Street

Bellaire, Ohio

COMPLIMENTS

— OF —

W. J. McGraw

CLASS OF '04

COMPLIMENTS
OF

G. C. MURPHY

"Bellaire's Friendly Store"

COMPLIMENTS
— OF —

Ball's Shoe Store

3244 Belmont Street

After the Game Take a
"Movie Vacation"—Visit the

CAPITOL and TEMPLE

BELLAIRE'S FAVORITE THEATERS

THRILLS IN FOOTBALL

Add to "Her" Thrills
With Flowers

CAPITOL

Flower Shoppe

Flowers For All Occasions



VICTORY IS SURE

While Victory over the Axis nations is certain, every football player will tell you never to let down for a moment until the final whistle blows.

The Hanna Mines in eastern Ohio plan not only on supplying their share of vital fuel until the war is over, but to continue to produce for a world at peace.

HANNA COAL CO.

**U. S. LAUNDRY
& DRY CLEANING CO.**

Cash and Carry

Home Owned

Phone 431

**UNITED
DAIRY
MILK**

HIT 'EM HARD — BIG REDS

On to Victory

Headquarters in Bellaire for
"BOBBY BROOKS" SWEATERS
All 100% Pure Wool — \$3.95—\$4.95—\$5.95

The Blum Co.

3172 Belmont St., Bellaire, Ohio

**Is Preferred By
Most People**

Best Wishes to BELLAIRE'S BIG REDS

**FARMERS and MERCHANTS
NATIONAL BANK**

BELLAIRE, OHIO

— A FRIENDLY BANK —

Member Federal Deposit Insurance Corporation

St. Clairsville High School

*Sept. 16	Cadiz	Away
*Sept. 22	Yorkville	Home
*Sept. 29	Dennison	Home
*Oct. 6	Adena	Home
*Oct. 13	Barnesville	Away
*Oct. 20	Shadyside	Away
*Oct. 27	Warren Consolidated	Home
*Nov. 3	Powhatan	Home
Nov. 11	Dillonvale	Away
(*) Night Games		

St. John's, Bellaire

Sept. 15	Yorkville	Home
*Sept. 22	Sistersville	Away
*Sept. 29	Shadyside	Away
Oct. 7	Follansbee	Home
*Oct. 14	Bridgeport	Away
*Oct. 20	Barnesville	Away
*Oct. 27	Wheeling Central	Away
Nov. 3	Open	
Nov. 11	Cameron	Home
Nov. 18	Union	Away
(*) Night Games		

EVA G. TREVEY FLOWER SHOP

FLOWERS FOR ALL OCCASIONS

3165 Belmont Street

Phones: Shop 937 — Residence 747-J

BELLAIRE HARDWARE AND SUPPLY

EVERYTHING IN HARDWARE,
PLUMBING AND HOUSEHOLD SUPPLIES

3201 Union Street
Bellaire, Ohio

Phone 208

IN THE GROOVE?

IF NOT, TRY

HERZBERG'S

SMARTER EVERY SEASON

COMPLIMENTS

— OF —

LINCOLN RESTAURANT

MIKE KLEMPA, Proprietor

DAVID CAMPBELL

GROCERIES

MEATS AND PRODUCE

Polar Frosted Foods

Phones 300 and 301

4575 Jefferson Street

Bellaire, Ohio

COMPLIMENTS

— OF —

The McClain Motor Co.

Penalties

- 1 Taking more than three times out during either half
- 2 Illegal delay of game
- 3 Failure of substitute to report to umpire
- 4 Violation of kick-off formation

- 13 Team not ready to play at scheduled time
- 14 Substitute communicating with teammates before ball is put in play
- 15 Illegal substitution (Player also suspended from game)
- 16 Failure to stop at least one second on shift play
- 17 Forward pass by member of team which did not put ball in play

- 29 Striking, kneeling, or kicking opponent—half the distance to the goal and disqualification of offending player
- 30 Foul within one yard line—half the distance to the goal

LOSS OF FIVE YARDS

- 5 Failure to maintain proper alignment of offensive team before ball is snapped. Also, backfield man illegally in motion
- 6 Offside by either team, or encroachment on neutral zone
- 7 Attempt to draw opponents offside

LOSS OF FIFTEEN YARDS

- 18 Forward pass touched by ineligible player
- 19 Intentional grounding of forward pass
- 20 Interference by member of passing team with defensive player eligible for pass
- 21 Interference with fair-catch or tackling player before ball is caught
- 22 Illegal use of hands and arms by offensive players

OTHER PENALTIES

- 31 Interference by defensive team on forward pass—first down for passing team at spot of foul
- 32 Flagrant roughing of kicker—disqualification, plus fifteen yards

- 8 Taking more than two steps with ball after signalling for fair catch
- 9 Illegal use of hands and arms by defensive players
- 10 Flying block or flying tackle
- 11 Running into kicker
- 12 Crawling by the runner

- 23 Defensive player striking opponent above shoulders
- 24 Roughing the kicker
- 25 Piling up, hurdling, clipping
- 26 Tackling player out of bounds
- 27 Coaching from the sidelines
- 28 Illegal interference with defense by passing team

- 33 Flagrant unsportsmanlike conduct—disqualification, plus fifteen yards
- 34 Forward pass touched by ineligible player on or behind line of scrimmage—loss of down



FORD
Acting Captain

The Progressive Print Shop

OFFICE SUPPLIES—
COMMERCIAL PRINTING

NEW LOCATION
332 Thirty-Third Street
Telephone 1230

You will always find the
Newest and Advanced Showing of
Jewelry, Diamonds and Watches
at our shop

FLOWERS? YES,

Three times a day;
Orchids always in stock

Let Us Serve You

BRYAN'S

FLORIST — — JEWELERS

Buckeye Bank Building

Bellaire, Ohio

Phone 213-J

COMPLIMENTS
OF

Stewart & Ward Incorporated

GEO. E. SCHOCKEY

Potted Plants

Cut Flowers

Floral Designs

WE GROW OUR OWN FLOWERS

City Bldg. on 32nd Street

Phone 98-R

Res. Phone 128-W

Right After the Game

STOP AND EAT AT THE

CITY RESTAURANT

"Home of Good Eats"

New Location

Buckeye Building—32nd Street

Finest Restaurant in Eastern Ohio

Belmont Auto Parts Co.

328 Thirty-Second Street Bellaire, Ohio

Across From Central Fire Station

Phone 360-J

EMIL STANEK, PROP.

WHEN YOU WANT THE BEST
ASK FOR

Stratford Beverages

Howel's Rootbeer, Orange Squeeze,
Lime Cola and Tom Collins, Jr.

Bottled by

STRATFORD SPRINGS CORP.

Wheeling, W. Va.

Woodsdale 970

COMPLIMENTS
OF

BRYAN BROTHERS JEWELERS

32nd Street Store

MAYTAG
Authorized
Service

EARL J. HEIL

ZIEGENFELDER'S ICE CREAM

DIFFERENT FROM THE OTHERS

Phone Wheeling 2385

COMPLIMENTS
OF

DR. JOHN TSCHAPPAT
DENTIST

Dankworth Building

BUY BONDS



**FREDERICK WASSMANN
& COMPANY**

FROZEN FOOD LOCKERS

Distributors

BIRDS EYE FROSTED FOODS

Phone 470

Bellaire, Ohio

Best Wishes

TO THE BIG REDS

Hoge-Davis Drug Co.

T. A. SCOTT

TRANSFER — STORAGE

Local and Long Distance Moving

Phone 126

THIRST CHOICE

2 glasses
for only

5¢

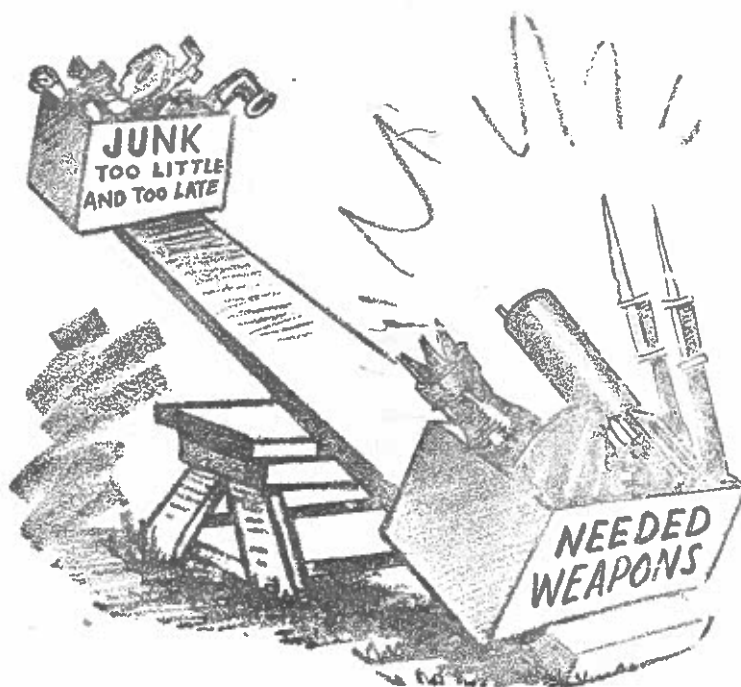


JACOBS BOTTLING CO.

Phone 96

Bellaire, Ohio

HAVE YOU FORGOTTEN



COMPLIMENTS
— OF —

NEHI BOTTLING CO.
BELLAIRE, OHIO

Exide Batteries

U. S. Tires

PURE OIL GASOLINE
JEFFERS BROS.

Phone 324-R

38th and Noble

Romeo Auto Laundry

EXPERT SIMONIZE
AND FINISH

Try Us Once and You'll
Come Again

Alley Behind U. S. Laundry

COMPLIMENTS
OF

J. C. McKELVEY
Jeweler

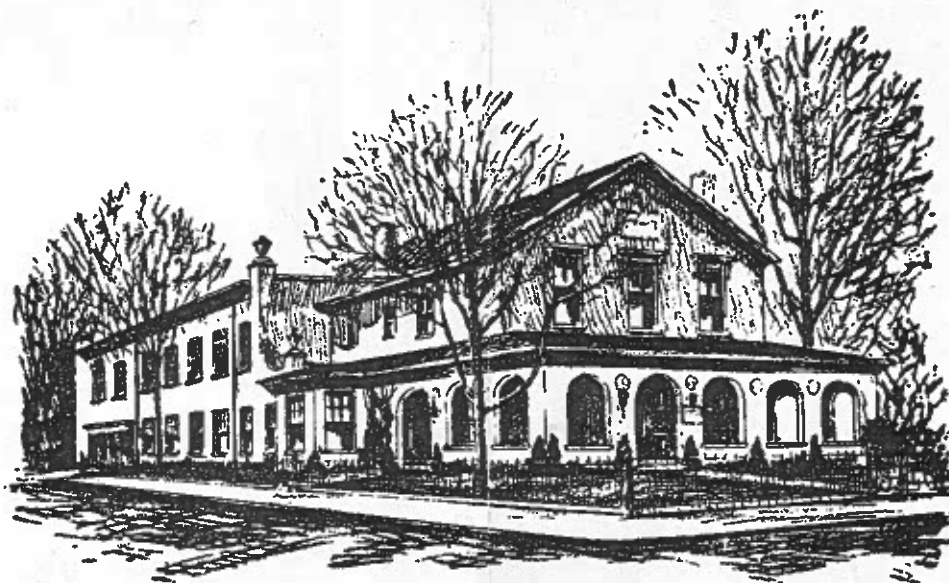
Bellaire Hi Football Squad

No.	Name	Pos.	Wt.	Hgt.	Yr. in Sc.	Age
32	Belt	G	185	5-10	Jr.	16
12	Bernardi	E	138	5-9	Sr.	16
10	Bonar	Q	139	5-8	So.	15
24	Brown, C.	HB	150	5-9	So.	16
39	Caretti	T	202	5-11½	Jr.	16
33	Daniel	C	165	5-9½	So.	15
38	Ford	HB	155	5-7½	Sr.	18
25	Giffin	HB	160	5-9	So.	15
28	Heil	E	170	6-2	Jr.	16
36	Heinrich	HB	155	5-10½	Jr.	16
18	Kaldor	FB	174	5-11	Jr.	17
13	Keyser	Q	180	5-8	Sr.	16
26	Liberati	G	161	5-11	Sr.	17
34	Lovejoy	HB	175	5-10	Sr.	17
41	Malik	Q	175	5-10	Jr.	16
30	Mayer	Q	150	5-8	Jr.	15
42	McClain	T	200	5-11	Jr.	15
23	Ross	HB	153	5-8½	Jr.	16
15	Rowley		143	5-10	Sr.	16
42	Scott	E	174	6-0	Sr.	16
18	Skorich	G	139	5-6½	So.	14
15	St. John	E	176	6-2	Sr.	17
37	Swartz	FB	190	5-9	Jr.	16
31	Wade	E	159	5-10½	So.	17
35	Workman	T	200	6-2	Sr.	16
24	Yadrick	G	208	5-8	Sr.	16
37	Hein	FB	160	5-9	Jr.	17
40	Meek	T	165	5-10½	So.	15
17	Miller	T	190	5-11	Sr.	17
20	Frizzi	C	170	5-9	Sr.	18
10	Sykes	G	158	5-7	Jr.	16
30	Teasdale	E	160	6-0	Jr.	16
32	Gill	HB	126	5-5	So.	15
18	Goddard					
25	Asher					
28	Riley					
28	Tobin					
34	Hess					
20	M. Rhodes					
19	A. Rhodes					
36	Ault					
22	Jones					
35	Albright					
23	Conroy					

EVERY employee at the "Big I" plant salutes Bellaire's "Big Reds" . . . and their visiting opponents! We have something in common—you play the best kind of football possible, we make the finest glassware in the good ole' U. S. A.

HAND MADE
Imperial
GLASS CORPORATION
BELLAIRE, OHIO U. S. A.

"Hasten the Attack — Buy More War Bonds"



ESTABLISHED 1860
GRAFTON-BAUKNECHT-MELLOTT CO.
Funeral Home

Bellaire 66

Shadyside 1007-W

Powhatan 14R2

Our Team Has the Ball On all War Fronts

WE WANT A TOUCHDOWN

BUY ANOTHER WAR BOND AND HOLD THE ONES YOU HAVE

The Union Savings Bank

The Young Man's Bank

Bellaire, Ohio
