



TEN CENTS
PER COPY

LINSLY vs. BELLAIRE

Saturday, September 23, 1944

Game Called at 3 o'clock

B. H. S. Athletic Field

EVERY DAY
OF
EVERY YEAR

WE ARE
BOOSTERS

OF THE
BIG REDS

YOUR DRUG STORE
DANKWORTH'S

Bowling

FOR YOUR

Health

EIGHT

REGULATION LANES

For Your Pleasure

RESERVATIONS OUR SPECIALTY

Leach Bowling Center

3470 Belmont Street

Phone 9110

DO NOT LOSE YOUR PERSPECTIVE

Sure these are war times. But a day will come when the people of the world will again settle back into the ways of peaceful living. That time, however, will bring added responsibilities and new opportunities. When you think of plans for your future do not forget the advantages of these First National Services.

A Personal Loan	—	For an emergency
A Checking Account	—	For convenience
A Safe Deposit Box	—	For safety
A Savings Account	—	For security

And for those who do not feel the need of a checking account — as a means of remitting funds — we recommend our low cost **FIRST NATIONAL MONEY ORDERS**.

FIRST NATIONAL BANK

IN BELLAIRE

Member Federal Deposit Insurance Corporation

Boost Your Band

Few of us realize the work and organization that is required to stage the band display at the half-time period with its split-second timing so the game can go on without interruption. We naturally expect the band performance because it is part of the game, if for no other reason than that of tradition. Let us appreciate our band for its true contribution to our weekly gridiron display.

Like a football player, they must practice playing and marching each day. Early each morning we find the band on the field, usually with the fog so thick that all the band can't be seen, marching and playing. Standing in the empty stand one gets the impression of a ghost band performing to an unappreciative audience. Wet feet and cold, numb fingers become part of the daily routine of a bandsman.

Our new band director, Russell Aukerman, comes to Bellaire from Powhatan where he taught music in the high school for more than a year. He graduated from St. Clairsville High School and Miami University. After teaching two months in the early part of 1943 at Powhatan, he was inducted into the Navy. Later he was discharged and returned to Powhatan High where he remained last year. He is well prepared to give the kind of guidance our band needs to build it into a great musical organization.

For the most part, Mr. Aukerman, wishes to keep our band a military one and will play the music the public wants and appreciates. He is doing much to stimulate music in the



RUSSEL AUKERMAN
Band Director

minds of the students of Bellaire High at a time when wartime jobs have made many changes in the band personnel.

Mr. Aukerman, we want to extend our hand to you and the band; you make a great contribution to a successful season.

P. S.—Sorry, girls . . . He's married.

DUVALL'S PHARMACY

Where You Meet the Best People
and Get the Most Change Back

THE STORE ON THE CORNER
44th and Noble Streets, Bellaire

ALLAN DICKEY

— All Forms of Insurance —

LEE LEVY

— Tax Consultant —

— — — — —
Offices at
3355 Belmont Street
Phone 65

**BELLAIRE FOOTBALL
SCHEDULE FOR 1944**

September 16

Bellaire 7 Shadyside 0

LINSLY

September 23 Home

UNION

September 30 Home

STEUBENVILLE CENTRAL CATHOLIC

October 7 Home

MOUNDSVILLE

October 14 Home

MARTINS FERRY

* October 20 Away

NEW PHILADELPHIA

October 28 Away

OPEN

November 4

STEUBENVILLE

November 11 Away

EAST LIVERPOOL

November 18 Home

WHEELING

November 30 Away

* Night Game



ALWAYS GOOD EATS

SUCH AS

SPAGHETTI — CHICKEN

STEAKS — FISH

WAITING FOR YOU AT THE

BELMONT RESTAURANT



COMPLIMENTS

— OF —

B. & P. BUS CO.



SHOP AT

KERN'S

WALL PAPER — PAINTS

CHINA — TOYS — GIFTS

Bellaire, Ohio

Martins Ferry, Ohio

Wheeling, W. Va.

Charleston, W. Va.

COMPLIMENTS

OF THE

**J. C. PENNEY
COMPANY**

F. J. HATHAWAY

General Transfer and Hauling

Phone 656 410 Thirty-third Street

ISALY

After the Game Meet Her at Isaly's

Home Owned and Home Operated
A. E. STIFEL, Prop.

LEWIS BROS.

PRESCRIPTION DRUGGISTS

Cor 44th and Jefferson St.
Bellaire, Ohio

The Elbert Co.

FUNERAL HOME

Phone 52

Bellaire, Ohio

SAY,

DO YOU KNOW
SOME FOLKS FORGET
TO BUY WAR BONDS?



MEMBER

Federal Home Loan Bank of Cincinnati
United States Savings and Loan League
Ohio Savings and Loan League
West Virginia Savings and Loan League

Even some of the folks who keep up with all the latest radio and newspaper news and mark lines of military strategy on tablecloths get a little behind on their Bond buying now and then. They are getting used to War Bond booths by now and that first fever of Bond buying that came after Pearl Harbor is running a little low.

They can read a list of casualties or men captured by the Japs and Germans without that impending urge to do something! Yet each time it's a different boy and a different mother to suffer heartaches. So, let's not fall down on the job. Come in and buy not only your pledged 10 percent, but dig down deep and buy an extra War Bond this week.

The BUCKEYE

Savings & Loan Company

If It's Electrical

SEE

CARL J. COCHRAN

Phone 298-J — Bellaire

COMPLIMENTS OF

MAFFE BROTHERS

Studebaker

SALES — SERVICE

Phone 48

1400 Belmont St.

Bellaire, Ohio

WHITE'S
COMMUNITY MARKET

MEATS, GROCERIES
POULTRY AND
VEGETABLES

YOU WILL LIKE OUR SERVICE

Phones 280 - 281

Corner 44th and Noble Streets

Bellaire's Complete Food Market

YOU CAN OWN YOUR HOME
Or Pay Rent All Your Life

LET THE BELMONT HELP YOU
BECOME A HOME OWNER

Good Homes can be bought now, or built after the war. You will like our
New Loan Plan — Fair, Simple, Modern.

Come In — We Will be Glad to Talk it Over With You.

IF YOU PLAN TO BUILD WHEN PEACE COMES,
INVESTIGATE OUR "OWN A HOME CLUB" NOW

BELMONT FEDERAL
SAVINGS AND LOAN ASSOCIATION

BELLAIRE, OHIO

BELLAIRE HI FOOTBALL PLAYERS



KEYSER
Quarterback



MALIK
Quarterback



MILLER
Tackles



LOVEJOY
Halfback

CUPAL CASTING CO.

— WE CAST ANYTHING —

Grey Iron, Aluminum, Brass

1441 Belmont St., Bellaire

Phone 155



VOTE FOR
ROSS MICHENER

Democratic Candidate for

CONGRESS

18th Ohio District

THE BIG RED BOOSTERS CLUB

MEMBERSHIP COMMITTEE

Harold Guirile
Ralph Goodwin
John Klempa
Chas. Heathcote

(Incorporated)

BELLAIRE, OHIO

"IT CAN **B** BE DONE"

Chas. Heathcote
Ed. Trisler
Louis "Cy" Welsh
Earl Leiffer
Dave Reed
J. E. Rosser

Headquarters—Third Floor City Building

BELLAIRE'S FOOTBALL TEAM IS UNDER NEW LEADERSHIP

Membership in the Big Red Boosters Club is the best way to co-operate for the success of the team. The regular membership costs two dollars per year.

IS YOUR NAME ON THIS LIST?

Homer Carman
F. E. Reinbolt
Stanley Ostasiewski
Henry Johnson
Albert Heil
Frank M. Heinrich
Howard Bippus
Morris Favish
Irving Spero
Books Shoe Co.
J. C. Penny Company
Louis Berman
George Lillikos
John Sidon
Earl Paul
Dan Heatherington, Sr.
Dan Heatherington, Jr.
Joe Mack
Albert De Blasis
Emil Jacobs
Earl Linch
L. L. Cunningham
Ben Pinsky
Chas. Stewart
John McClain
Sam Cicogna
Homer Conner
Herbert Glaser
St. Clair Archer

Carl Koch
J. E. Rosser
Linton Johnson
Harry Pinsky
Joe Civins
T. A. Scott
Maurice Mountain
Guy Dankworth
Ed. Rafferty
Chas. Rosser
Frank Vannelle
Dr. J. F. Wilkinson
Wm. Siddall
J. Earl Green
B & P Bus Co.
Albert Mountain
John Feller
Earl Johnson
Carl Cochran
John Tobin
W. W. Shackelford
Clyde Duffy
J. V. Nelson
Chas. Kahl, Jr.
Nello Proetti
Louis Heinline
Doe Miller
Morlan Chemical Co.
George Swartz

Progressive Print Shop
John Lambros
Joe Valloric
Charles Devenzio
Frank Padula
Marty Connors
Mike Klempa
Ralston Kerr
George Robinson
Harry Herzberg
Hyman Mendelson
Everett Malpeidi
Albert Noice
Martin Lipperman, Sr.
Clark Porter
Lester Ault
A. A. Hack
I. I. Mendelson
Dewey Corbett
Hays Marshall
John Howell
Matz Brewery
HONORARY
MEMBERS
Miss Esther Pinsky
Mrs. Ray Mazelli
E. A. Burrows
Gordon C. Dix
S. H. Blum

COMPLIMENTS
OF

CIVIN BROS.
Automobile Service

Corner 23rd and Belmont
Phone 550

COMPLIMENTS OF

The Neff Lumber Co.

YARDS AT

NEFFS, OHIO
Phone Bellaire 21

POWHATAN, OHIO
Phone Powhatan 18-R-2

-STOP-

Before and After
The Game

At

H A P ' S

Park by the Park

For the Complete Story and Pictures
of Today's Game, Buy and Read

The Times-Leader

Martins Ferry Times

Bellaire Daily Leader

Eastern Ohio's Complete Home Newspaper

A. B. C. CIRCULATION OVER 18,300
I. N. S. AND U. P. WIRE SERVICES

—“Let The Home—Furnish Your Home”—

Furniture—Carpets—Stoves

Shades—Linoleum—Bedding

The Home Co.

Phone 89

3333 Belmont St.

COMPLIMENTS
OF

The

Imperial Ice Cream Co

Wheeling, W. Va.

CLOVERDALE

GRADE A MILK

Pasteurized — You'll Like It

Bellaire 466

Whg. 2860

**THE RODEFER
GLASS COMPANY**

Bellaire, Ohio

Manufacturers of

**Pressed and Blown Glassware
To Specification**

Established 1877



Offside and violation of kickoff formation. (Penalty, 5 yards.)



Unsportsmanlike conduct. (Penalty — 15 yards.) For flagrant unsportsmanlike conduct — 15 yard penalty and disqualification.



Illegal formation or position of one or more players. (Penalty — 5 yards from where ball was put in play.)



Player illegally in motion. (Penalty, 5 yards. If from shift or huddle, 15 yards.)



Intentional grounding of forward pass. (Penalty — loss of down and 15 yard penalty from spot of preceding down.)



Unnecessary roughness, illegal defensive use of the hands. (Penalty, 15 yards.)



Military salute also used for clipping, followed by striking the back of the knee with hand. (Penalty, 15 yards.) Signal also used for disqualification fouls and for running into or roughing the kicker. In the latter case, the military salute is followed by swinging the leg as though punting.



Holding. (Penalty — by offense, 15 yards; by defense, 5 yards.)



Scores—touchdowns, field goal, or conversion.



Interference with forward pass, pass touching ineligible player, or "screening" pass receiver. (If penalty on offense, 15 yards and loss of down; interference by defense, ball to offense on spot of foul as first down.)



Safety.



Delay of game or extra time-outs. (Penalty, 5 yards.)



Illegal touching of kicked ball inside opponent's 10-yard line — touchback.



Illegal forward pass.



Penalty refused, incomplete pass, missed field goal or conversion, both sides offside, etc.



Time out.

COMPLIMENTS

— OF —

FOUR BOOSTERS OF THE BIG REDS

H. P. RODEWIG & CO.

HOME FURNISHINGS

3125-3127 Belmont St.

YINGLING'S

COMPLETE FOOD MARKET

Orchid Brand Hams, Bacon,
Lard and Sausage

3273 Belmont Street

Bellaire, Ohio

COMPLIMENTS

— OF —

W. J. McGraw

CLASS OF '04

MIDDY'S GRILL

WHERE THE
STUDENTS MEET AND EAT

Across from Bellaire High School

JAMES T. GREENLEE

West Bellaire's Complete

FOOD MARKET

Phone 434-M

Archibald Hardware

Dolls and a Complete Line of Toys
at Cut Rate for the Season

3254 Belmont Street

Phone 680

COMPLIMENTS

— OF —

THE ZWEIG FURNITURE
STORE

J. L. LINARD

615-16 First National Bank Building

Specialized Service

. . . in . . .

Insurance and Real Estate

Since 1897

YOUR PRESCRIPTION
WILL BE ACCURATELY FILLED AT

McKelvey's Pharmacy

Phones 912—9134

3127 Union Street

Ohio Paint and Glass Co.

WALLPAPERS
PAINT GLASS

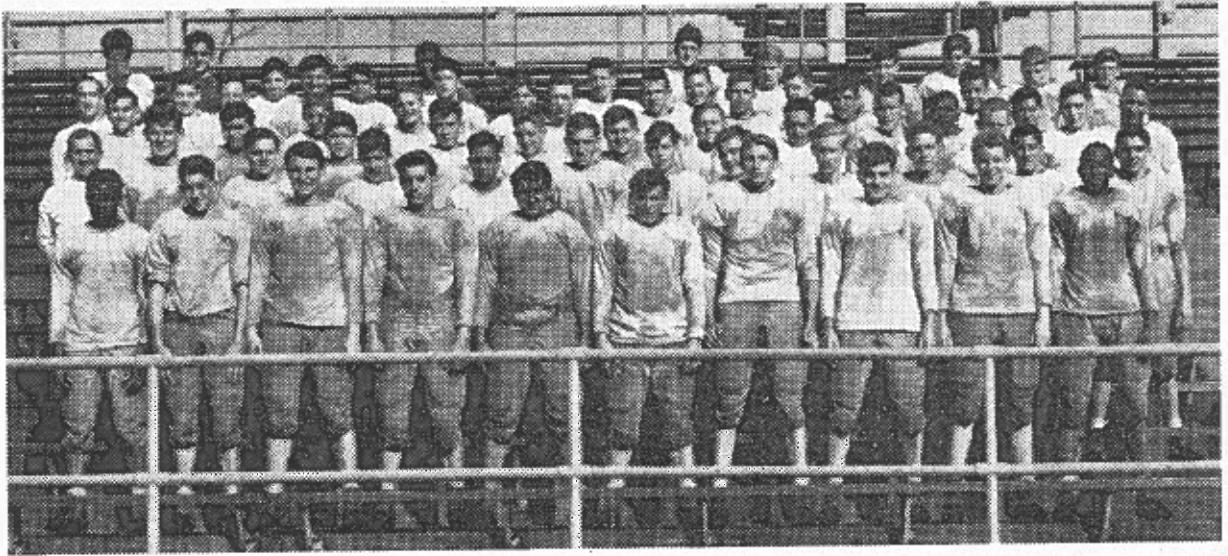
and

Imperial Candlewick

Phone 765

3374 Belmont Street

1944 Bellaire Varsity Squad



First Row: From Left to Right:

Ford, Raily, Miller, Studenic, Yadrick, Keyser, St. John, Frizzi, Cartwright and Wade.

Second Row:

Head Coach, Foti; Workman, Lovejoy, Sykes, Tobin, C. Brown, Teasdale, Riley, Stratzer, Rhodes, Meek, Bernardi, and Ross.

Third Row:

Giffin, Carretti, Hein, Heinrick, Ault, Goddard, Swartz, Bresinger, W. Brown, Clark, Turne, Rhodes, Skorich, Bishop, and Daniels.

Fourth Row:

Assistant Coach, Maffeo; Spradling, Scott, Kaldor, Lewis, Gill, Malik, Willis, Jones, Liberati, West, McClain, Kerr, Bonar and Conroy.

Fifth Row:

Manager Ripoly, Manager D'Allesandro; Marinelli, Tuccio, Asher, Turner, Heil, Belt, Albright and Coates.

Bellaire Football Fans are Widely Known for Their Loyal Support of the Big Reds

We Republican Candidates for County Offices would appreciate their support on November 7th

RALPH R. BETTS	REPRESENTATIVE TO THE GENERAL ASSEMBLY
HOWARD W. PLETCHER	COUNTY COMMISSIONER
GEO. M. TAYLOR	COUNTY COMMISSIONER
WILLIAM IDDINGS	PROSECUTING ATTORNEY
LON McGLUMPHY	CLERK OF COURTS
FORD MOORE	SHERIFF
LIN C. GRIFFITH	RECORDER
M. E. HALL	TREASURER
WM. S. SHRIVER	COUNTY ENGINEER

TIME

SATURDAY, SEPTEMBER 23

OFFICIALS

Camilletti, Wheeling
Heil, Wheeling
Carrico, Wheeling

Linsly Probable Lineup

78—Weyrauch Captain) ...	L. G.	180
70—Litten, T.	L. H.	138
76—Schafer	F. B.	182
72—Siegel	R. E.	190
63—Anthony	R. H.	155
74—Puzzouli	R. G.	164
77—Keane	Q. B.	160
58—Reeves	C.	164
57—Stauffer	R. T.	192
56—Sponhaltz	L. T.	170
75—Yost	L. E.	168

COACHES

(Head)—Glenn, West Virginia University
(Ass't.)—Petty, Illinois University

STUDENT MANAGERS

Crowl Haislip Pelger
Thomas Teters

SHADYSIDE CHEER LEADERS

Halfpenny Burt Horne

SCORE	1	2	3	4	TOTAL
Linsly					
Bellaire					



OUT - the signal for

the Pause that Refreshes

NEXT GAME—UNION
NEXT SATURDAY



Bellaire Probable Lineup

19—Jess Heil	L. E.
17—Miller	L. T.
26—Liberati	L. G.
20—Frizzi (Captain)	C.
24—Yadrick	R. G.
35—Workman	R. T.
38—Ford	L. H.
34—Lovejoy	R. H.
13—Keyser	Q. B.
29—Swartz	F. B.
31—Wade	R. E.

HEAD COACH

James Foti, Carroll University
S. W. Maffeo, Asst. Coach

FACULTY MANAGER

I. R. McCarley, Rio Grande

FACULTY EQUIPMENT MANAGER

Dale Bethel, Ohio University

BAND DIRECTOR

Russell Aukerman, Miami University

DRUM MAJOR—Tony Chirpas

STUDENT MANAGERS

Frank Ripoly Junior Boston
Mario D'Allessandro Gene Gray

BELLAIRE HI CHEER LEADERS

Sophomores:	Shirley Lynn
Ella Given Banker	Mavoureen Hartley
June Mackey	Maxine Andrews
Nancy Callahan	Seniors:
Joan Boone	Gina Snider
Martha Culbertson	Billie Dimmack
Mary Lou Heil	Margie Price
Juniors:	Lois Heatherington
Norma Niedemeyer	Adlena Gentile



Linsly Military Institute Football Roster

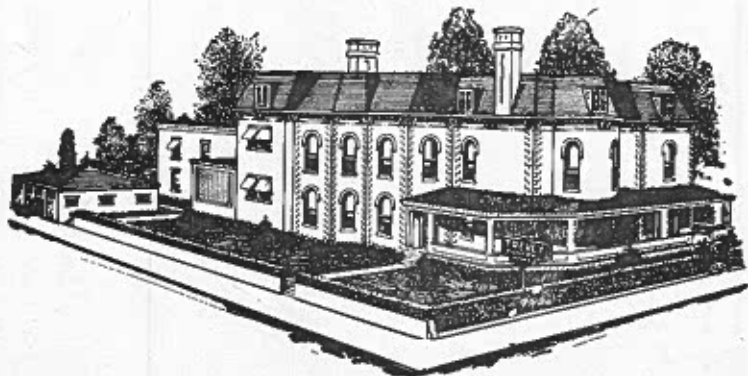
78—Weyrauch (Captain)	L. G.	180
70—Litten, T.	L. H.	138
76—Schafer	F. B.	182
72—Siegel	R. E.	190
63—Anthony	R. H.	155
74—Puzzouli	R. G.	164
77—Keane	Q. B.	160
68—Reeves	C.	164
67—Stauffer	R. T.	192
66—Sponhaltz	L. T.	170
75—Yost	L. E.	168
65—Blake, R.	R. H.	155
71—Glenn	L. H.	154
92—Jefferson	Tackle	184
89—Reed	Guard	150
88—Kettlewell	Q. B.	140
73—Blake, C.	End	160
69—Jochum	End	149
82—Litten, R.	Back	140
85—Brieding	Back	150
86—Franzell	Back	140
87—Sauders, H.	Guard	155
93—Rote	Tackle	165
64—Wiseman	Back	175
84—Hagedorn	Tackle	162
83—Sax	Back	146
91—Mielcarek	End	154
80—Weibel	Center	145
90—Cook	Guard	150
81—Blaskovich	End	170
—Hamilton	Tackle	155
—Williams	Center	145
—Agrippe	Guard	160
—Beltz	End	144
—Hicks	Tackle	206
—Humphrey	Back	130
—Wenrich	Back	135
—Teteris	Tackle	200
—Dix	Guard	120
—Hudson	Tackle	172
—Sauders, D.	Guard	142
—Heil	Center	116

TREVEY'S

Largest and Finest
Funeral Home

Ambulance Service

PHONE 1000



COMPLIMENTS OF

**JOE TERRIS
BARBER SHOP**

Under The Union Savings Bank

**Good Luck to the
BIG REDS and JIM**

JOE MACK

COMPLIMENTS
OF

W. T. GRANT CO.

**Good Luck to the
BIG REDS**

**Archer and Ault
MEN'S SHOP**

CLOTHING AND FURNISHINGS

**BEST WISHES TO COACH FOTI
AND THE BELLAIRE HIGH TEAM
FOR A SUCCESSFUL 1944 SEASON**

**RAIL & RIVER COAL
COMPANY**

WALTER SCOTT SERVICE STATION

GOOD GULF PRODUCTS

Washing and Greasing

Stop in and See Us

Cor. 37th and Belmont

Call Wheeling 1717

For Office Supplies and Equipment

FREE DELIVERY

McGHEE & COMPANY

Corner 14th and Main Sts., Wheeling, W. Va.

PREPARE TODAY

FOR AN ALL-ELECTRIC
HOME OF

TOMORROW

The Bonds You Buy Now
Will Make Your Dreams Come True

Wheeling Electric Co.

Present Day Facts

25 percent of all our Wacs are married.

600,000 of our present army are volunteers.

In 1943 our planes evacuated 173,527 wounded from the battle areas. Only 11 deaths occurred during flight.

Up to the time of the invasion of Europe, the casualty list of merchant seamen was five times longer than that of the other armed forces.

More than 1,000 planes fly the north Atlantic in both directions each week.

As of late April, our Navy had sunk or badly damaged over 2,000,000 tons of Japanese ships, not including 66 warships. This represents almost one third of Japan's pre-war tonnage of 7,500,000 tons.

Today we have an army of 7,700,000, while before the draft we had 510,224.

JOHN P. VALENT

Fresh Meats of All Kinds - Groceries - Fresh
Vegetables - Cigarettes - Tobacco - Candy

4245 Harrison Street

BELLAIRE, OHIO

Phone 569-R

SAM WALKER

INSURANCE OF ALL KINDS

Auto--Fire--Life--Bonds

Phone 970

First National Bank Building

Bellaire, Ohio

COMPLIMENTS
OF

G. C. MURPHY

"Bellaire's Friendly Store"

COMPLIMENTS
— OF —

Ball's Shoe Store

3244 Belmont Street

After the Game Take a
"Movie Vacation"—Visit the

CAPITOL and TEMPLE

BELLAIRE'S FAVORITE THEATERS

THRILLS IN FOOTBALL

Add to "Her" Thrills
With Flowers

CAPITOL

Flower Shoppe

Flowers For All Occasions



VICTORY IS SURE

While Victory over the Axis nations is certain, every football player will tell you never to let down for a moment until the final whistle blows.

The Hanna Mines in eastern Ohio plan not only on supplying their share of vital fuel until the war is over, but to continue to produce for a world at peace.

HANNA COAL CO.

**U. S. LAUNDRY
& DRY CLEANING CO.**

Cash and Carry

Home Owned

Phone 431

HIT 'EM HARD — BIG REDS

On to Victory

Headquarters in Bellaire for

"BOBBY BROOKS" SWEATERS

All 100% Pure Wool — \$3.95—\$4.95—\$5.95

The Blum Co.

3172 Belmont St., Bellaire, Ohio

**UNITED
DAIRY
MILK**

**Is Preferred By
Most People**

Best Wishes to BELLAIRE'S BIG REDS

**FARMERS and MERCHANTS
NATIONAL BANK**

BELLAIRE, OHIO

— A FRIENDLY BANK —

Member Federal Deposit Insurance Corporation

Linsly Institute

Sept. 8	Central Catholic (Night)	Away
Sept. 15	Moundsville (Night)	Away
Sept. 23	Bellaire	Away
Sept. 30		
Oct. 6	Shadyside	Pittsburgh
Oct. 13	Wheeling (Night)	Away
Oct. 21	Warwood	Away
Oct. 27	Weirton (Night)	Away

Ohio State

Sept. 16		
Sept. 23		
Sept. 30	Missouri	Home
Oct. 7	Iowa	Home
Oct. 14	Wisconsin	Away
Oct. 21	Great Lakes	Home
Oct. 28	Minnesota	Home
Nov. 4	Indiana	Home
Nov. 11	Pittsburgh	Home
Nov. 18	Illinois	Cleveland
Nov. 25	Michigan	Home

EVA G. TREVEY FLOWER SHOP

FLOWERS FOR ALL OCCASIONS

3165 Belmont Street

Phones: Shop 937 — Residence 747-J

BELLAIRE HARDWARE AND SUPPLY

EVERYTHING IN HARDWARE,
PLUMBING AND HOUSEHOLD SUPPLIES

3201 Union Street
Bellaire, Ohio

Phone 208

IN THE GROOVE?

IF NOT, TRY

HERZBERG'S

SMARTER EVERY SEASON

COMPLIMENTS

— OF —

LINCOLN RESTAURANT

MIKE KLEMPA, Proprietor

DAVID CAMPBELL

GROCERIES
MEATS AND PRODUCE

Polar Frosted Foods

Phones 300 and 301

4575 Jefferson Street

Bellaire, Ohio

COMPLIMENTS

— OF —

The McClain Motor Co.

Penalties

- 1 Taking more than three times out during either half
- 2 Illegal delay of game
- 3 Failure of substitute to report to umpire
- 4 Violation of kick-off formation

- 13 Team not ready to play at scheduled time
- 14 Substitute communicating with teammates before ball is put in play
- 15 Illegal substitution (Player also suspended from game)
- 16 Failure to stop at least one second on shift play
- 17 Forward pass by member of team which did not put ball in play

- 29 Striking, kneeling, or kicking opponent—half the distance to the goal and disqualification of offending player
- 30 Foul within one yard line—half the distance to the goal

LOSS OF FIVE YARDS

- 5 Failure to maintain proper alignment of offensive team before ball is snapped. Also, backfield man illegally in motion
- 6 Offside by either team, or encroachment on neutral zone
- 7 Attempt to draw opponents offside
- 8 Taking more than two steps with ball after signalling for fair catch
- 9 Illegal use of hands and arms by defensive players
- 10 Flying block or flying tackle
- 11 Running into kicker
- 12 Crawling by the runner

LOSS OF FIFTEEN YARDS

- 18 Forward pass touched by ineligible player
- 19 Intentional grounding of forward pass
- 20 Interference by member of passing team with defensive player eligible for pass
- 21 Interference with fair-catch or tackling player before ball is caught
- 22 Illegal use of hands and arms by offensive players
- 23 Defensive player striking opponent above shoulders
- 24 Roughing the kicker
- 25 Piling up, hurdling, clipping
- 26 Tackling player out of bounds
- 27 Coaching from the sidelines
- 28 Illegal interference with defense, by passing team

OTHER PENALTIES

- 31 Interference by defensive team on forward pass—first down for passing team at spot of foul
- 32 Flagrant roughing of kicker—disqualification, plus fifteen yards
- 33 Flagrant unsportsmanlike conduct—disqualification, plus fifteen yards
- 34 Forward pass touched by ineligible player on or behind line of scrimmage—loss of down



FRIZZI
Acting Captain.

The Progressive Print Shop

OFFICE SUPPLIES—
COMMERCIAL PRINTING

NEW LOCATION

332 Thirty-Third Street
Telephone 1230

You will always find the
Newest and Advanced Showing of
Jewelry, Diamonds and Watches
at our shop

FLOWERS? YES,

Three times a day;
Orchids always in stock

Let Us Serve You

BRYAN'S

FLORIST — — JEWELERS

Buckeye Bank Building

Bellaire, Ohio

Phone 213-J

COMPLIMENTS
OF

Stewart & Ward Incorporated

GEO. E. SCHOCKEY

Potted Plants

Cut Flowers

Floral Designs

WE GROW OUR OWN FLOWERS

City Bldg. on 32nd Street

Phone 98-R

Res. Phone 128-W

Right After the Game
STOP AND EAT AT THE
CITY RESTAURANT
"Home of Good Eats"

New Location

Buckeye Building—32nd Street

Finest Restaurant in Eastern Ohio

Belmont Auto Parts Co.

328 Thirty-Second Street

Bellaire, Ohio

Across From Central Fire Station

Phone 360-J

EMIL STANEK, PROP.

WHEN YOU WANT THE BEST
ASK FOR

Stratford Beverages

Howel's Rootbeer, Orange Squeeze,
Lime Cola and Tom Collins, Jr.

Bottled by

STRATFORD SPRINGS CORP.

Wheeling, W. Va.

Woodsdale 970

COMPLIMENTS
OF

BRYAN BROTHERS JEWELERS

32nd Street Store

MAYTAG
Authorized
Service

EARL J. HEIL

ZIEGENFELDER'S ICE CREAM

DIFFERENT FROM THE OTHERS

Phone Wheeling 2385

COMPLIMENTS
OF

DR. JOHN TSCHAPPAT
DENTIST

Dankworth Building

BUY BONDS



**FREDERICK WASSMANN
& COMPANY**

FROZEN FOOD LOCKERS

Distributors

BIRDS EYE FROSTED FOODS

Phone 470

Bellaire, Ohio

Best Wishes

TO THE BIG REDS

Hoge-Davis Drug Co.

T. A. SCOTT

TRANSFER — STORAGE

Local and Long Distance Moving

Phone 126

THIRST CHOICE

2 glasses
for only

5¢



JACOBS BOTTLING CO.

Phone 96

Bellaire, Ohio

TERMS AND PLAYS

Some Major Differences Between Inter-scholastic and Collegiate Football Rules.

Substitutes and right to return—Federation: Substitution* rules are the same throughout the game. Collegiate: In last two minutes of a half, the watch starts when substitution is completed.

Federation: Captain's sanction of a substitute is not required, and substitute becomes a player when he reports to an official. Collegiate: Captain's sanction is required.

Federation: A lineman who has been legally shifted to the backfield may return to a line position if he is withdrawn and re-enters the game. Player who has been withdrawn to correct defective (illegal) equipment may re-enter as usual. Collegiate: Such returns are not permitted.

Forward Pass—Federation: Forward passer may be anywhere behind line of scrimmage and more than one pass may be thrown. Collegiate: Passer must be 5 yards behind line. A second forward pass from behind the line is illegal.

Federation: Defensive player must make effort to avoid hitting the passer after pass has left his hands. Collegiate: Protection only if passer is "obviously out of the play."

Federation: Loss of 5 from spot is the distance penalty for either (1) forward pass beyond the line, or (2) forward pass not from scrimmage. Collegiate: Distance penalty for (1) is loss of down and for (2) is 15. Spot of enforcement or (1) is previous spot—for (2) is spot of pass.

COMPLIMENTS

— OF —

NEHI BOTTLING CO.

BELLAIRE, OHIO

Exide Batteries

U. S. Tires

PURE OIL GASOLINE

JEFFERS BROS.

Phone 324-R

38th and Noble

Romeo Auto Laundry

**EXPERT SIMONIZE
AND FINISH**

Try Us Once and You'll
Come Again

Alley Behind U. S. Laundry

COMPLIMENTS
OF

**J. C. McKELVEY
Jeweler**

Bellaire Hi Football Squad

No.	Name	Pos.	Wt.	Hgt.	Yr. in Sc.	Age
32	Belt	G	185	5-10	Jr.	16
12	Bernardi	E	138	5-9	Sr.	16
10	Bonar	Q	139	5-8	So.	15
29	Brown, C.	HB	150	5-9	So.	16
39	Caretti	T	202	5-11½	Jr.	16
37	Cartwright	T	188	6-0	Sr.	17
25	Clark, Donovan	E	165	6-1½	Sr.	17
33	Daniel	C	165	5-9½	So.	15
38	Ford	HB	155	5-7½	Jr.	18
11	Giffin	HB	160	5-9	So.	15
28	Heil	E	170	6-2	Jr.	16
36	Heinrich	HB	155	5-10½	Jr.	16
18	Kaldor	FB	174	5-11	Jr.	17
13	Keyser	Q	180	5-8	Sr.	16
26	Liberati	G	161	5-11	Sr.	17
34	Lovejoy	HB	175	5-10	Sr.	17
10	Malik	Q	175	5-10	Jr.	16
30	Mayer	Q	150	5-8	Jr.	15
42	McClain	T	200	5-11	Jr.	15
23	Ross	HB	153	5-8½	Jr.	16
15	Rowley	C	143	5-10	Sr.	16
11	Scott	E	174	6-0	Sr.	16
14	Skorich	G	139	5-6½	So.	14
15	St. John	E	176	6-2	Sr.	17
30	Studenic	E	165	5-11	Sr.	17
29	Swartz	FB	190	5-9	Jr.	16
31	Wade	E	159	5-10½	So.	17
35	Workman	T	200	6-2	Sr.	16
24	Yadrick	G	208	5-8	Sr.	16
37	Hein	FB	160	5-9	Jr.	17
40	Meek	T	165	5-10½	So.	15
17	Miller	T	190	5-11	Sr.	17
20	Frizzi	C	170	5-9	Sr.	18
41	Sykes	G	158	5-7	Jr.	16
38	Teasdale	E	160	6-0	Jr.	16
	Clark, Wm.	G	140	5-8	Jr.	15
	Gill	HB	126	5-5	So.	15

EVERY employee at the "Big I" plant salutes Bellaire's "Big Reds" ... and their visiting opponents! We have something in common—you play the best kind of football possible, we make the finest glassware in the good ole' U. S. A.

HAND MADE
Imperial
GLASS CORPORATION
BELLAIRE, OHIO U. S. A.

"Hasten the Attack — Buy More War Bonds"



ESTABLISHED 1860
GRAFTON-BAUKNECHT-MELLOTT CO.
Funeral Home

Bellaire 66

Shadyside 1007-W

Powhatan 14R2

Our Team Has the Ball On all War Fronts
WE WANT A TOUCHDOWN

BUY ANOTHER WAR BOND AND HOLD THE ONES YOU HAVE

The Union Savings Bank

The Young Man's Bank

Bellaire, Ohio
