



281

SOUVENIR SCORE CARD

(Compiled by the Bellaire Hi-Y Club)

PAINESVILLE

VS.

BELLAIRE

FOOTBALL GAME

B. H. S. Athletic Field

Saturday, October 22nd, 1938

Game Called at 2:30 O'clock

NEXT GAME OCT. 29TH—BELLAIRE vs. MARTINS FERRY (AWAY)

FIVE CENTS THE COPY



ELECT

John W. Bricker



GOVERNOR

OF OHIO



NIEMIEC
Coach

John A. Niemiec attended Bellaire Hi School from 1920 to 1924. From here he went to Notre Dame in 1925 to 1929 where he obtained an A. B. Degree. From 1930 to 1932 he coached Football, Basketball, and Baseball at Rice Institute, at Houston, Texas. Then from 1932 to 1934 he coached at Alamo Heights Hi School, San Antonio, Texas. Prior to coming to Bellaire High he coached at Columbia College, Dubuque, Iowa, coaching football, basketball, baseball, and track, from 1934 to 1938.



STEVE POLINSKY

Graduated from Muskingum college, 1931, and has served as an able coach at Bellaire Hi since that time.

YEA, BIG REDS!

A New Name...A New Face In County Politics



JAY E. GREEN

Republican Candidate For

COUNTY AUDITOR

Means Economy For All

Your Support Earnestly Solicited and Greatly Appreciated

Seeking Public Office for the First Time

BELLAIRE 220.

DAIRY PRODUCTS

Best By Test

Meadowcrest Dairy

BRIDGEPORT 21.

ICE CREAM

The Cowen-Dickens Company

INSURANCE SPECIALISTS

BELLAIRE

PHONE 97

OHIO

Residence
4335 Noble St.
Bellaire, Ohio

CHARLES STRAHL

Phone
586-M
Bellaire, Ohio

Reasonable
Prices

“Once a customer, always
a customer.”

Domestic
Coal

Compliments
of

**SHERIFF
HOWARD A. DUFF**

Compliments
of

**JUDGE
BERNARD G. WITTEN**

The school officials welcome you to the Bellaire Stadium for the home games of 1938. It is your loyal support which makes football a success in Bellaire. The Boys High-Y are especially grateful to all those who have helped to make this program for the games possible through advertising.



J. V. NELSON
Supt. Bellaire Public Schools

The Union Savings Bank

=====

OPEN A CHECK ACCOUNT
FOR HOME OR BUSINESS

=====

THE YOUNG MEN'S BANK
MEMBER FEDERAL DEPOSIT INSURANCE CORP.

COMPLIMENTS OF

Judge
CLIFFORD L. BELT

COMPLIMENTS OF

Judge
Harry L. Albright

The Neff Lumber Company

Lumber
Sand
Gravel
Cement
Building Block
Roofing

Hardware
Paints
Stoves
Radios
Washers
Refrigerators

"IF IT'S TO BUILD WITH WE HAVE IT"

NEFFS, OHIO

Yards At:

and

POWHATAN, OHIO

Phone
Bellaire 21

Phone
Powhatan 18

Earl J. Heil Radio and Electric Co.

NORGE AND PHILCO PRODUCTS

"We Sell the Best and Service the Rest"

3281 Belmont Street Phone 462 Bellaire, Ohio

BELLAIRE HIGH SCHOOL OFFICIAL FOOTBALL SCHEDULE 1938 1938

| | | | |
|------------------------|--------------------------------|-----------------------|--------------------------------|
| Saturday, September 17 | SHADYSIDE - - - Home | Saturday, October 22 | PAINESVILLE - - - Home |
| Saturday, September 24 | BRIDGEPORT - - - Home | Saturday, October 29 | MARTINS FERRY - - - Away |
| Saturday, October 1 | TILTONSVILLE - - - Home | Saturday, November 5 | NEW PHILADELPHIA - - - Away |
| Saturday, October 8 | COLLINGWOOD CLE. - - - Home | Saturday, November 12 | YOUNGSTOWN E. - - - Home |
| Saturday, October 15 | UNION - - - Home | Thursday, November 24 | WHEELING - - - Away |

COMPLIMENTS OF

CORRELL PHOTO SERVICE

FILM SERVICE

Dankworth Bldg.

Phone 92-J

Exide Batteries

Expert Lubrication

WHITE ROSE GASOLINE

Jeffers Bros.

Phone 716-J.

38th and Noble

SEVEN

Compliments of

THE

McCLAIN MOTOR CO.

Swift To Serve You

ALBERT VASEK & SON

GROCERIES AND MEATS

Tele. 570-M

4403 Harrison Street

BELLAIRE, OHIO

Compliments of

JESSE A. WILSON

BELMONT COUNTY RECORDER

YELLS!!!

Oh! Gee whiz!
Look at that score
We know it's good!
But we want more!!!

Baby's in a high chair
Who put her there?
Ma? Pa?
Sis! Boom! Bah!
Bellaire High School
Rah! Rah! Rah!

Ash can! Tin can!
Who can! Bellaire can!
Yeh Big Reds!!!

We've got a school!
We've got a yell!

We've got a team!
That fights like?
Hit 'em high,
Hit 'em low
Come on Bellaire!
Let's Go!!!

Fight! Fight! Big Reds
Fight! Fight! Big Reds
Come on! Fight!!
Strawberry Shortcake
Huckleberry Pie
V - I - C - T - O - R - Y

Are we in it?
Yes! I guess
For there's the team of B. H. S.
Yeh! Big Reds!

T - E - A - M
T - E - A - M
T - E - A - M
Fight! Fight! Fight!
Yeh Bellaire!
Yeh Bellaire!
Beat (Opponents)!!!

Rah! Rah! Rah! Rah!
Rah! Rah! Rah! Rah
Bellaire High School!
Bellaire High School!
Team! Team! Team!

Eow! Big Reds!
Eow! Big Reds!
Eow! Big Reds!
V - i - c - t - o - r - y

THIS ADVERTISEMENT IS WORTH 10c TO YOU

A reduction of 10c on a pair of \$1.00 or 79c fine
"Majud" silk hose by bringing this advertisement for
3 days after any game.

at BLUMS

3172 Belmont

Books Features Sell People the First Time

BOOK'S SHOES

Books Quality Brings Them Back

**1051 Main Street
Wheeling**

**3242 Belmont Street
Bellaire**

Compliments
of

**THE ZWEIG FURNITURE
STORE**

Compliments
of

**H. J. FINDLEY
County Treasurer**



EARL BEACH
Director of Band



IRWIN R. McCARLEY
Athletic Director



TOM DIXON
Basketball Coach

Compliments
of
GEO. ROBINSON

Jewelers in Bellaire
Since 1898

Phillips Jewelry Store

"The City Hall Jewelers" Bellaire, O.

Phone 268-J

Compliments
of
**CAPITOL AND
TEMPLE
THEATERS**

Compliments
of

THE HUB

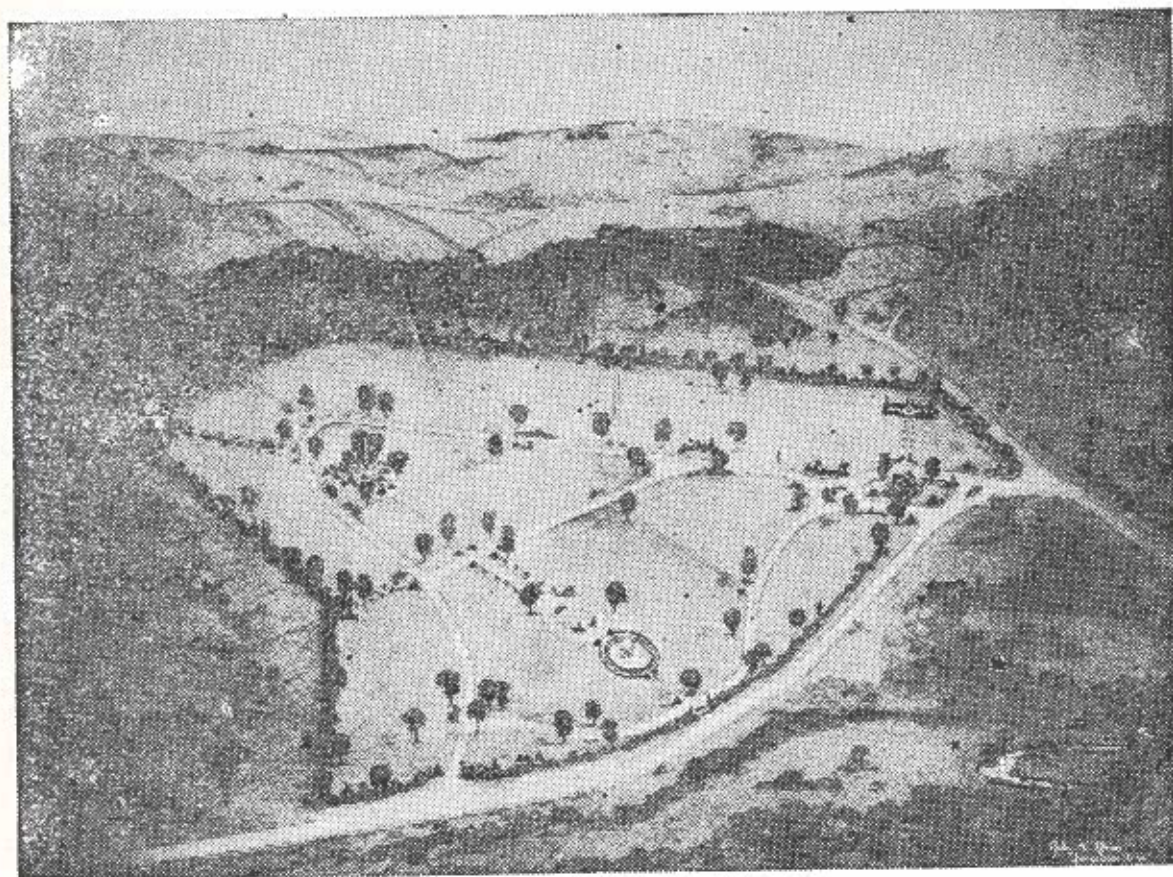
Clothing

Furnishings

Bellaire, Ohio

INVEST IN REST BEFORE
REST INVESTS IN YOU

Where the Memory of Beautiful Lives will Be Kept Beautiful Always



A Park So Beautiful

The New Idea

Perpetual Care

Lawn
Type

Low
Costs

We urge you to purchase your burial estate now—before you need it. It will save heartache, eliminate added expense, confusion and worry at time of death.

Belmont County Memorial Park

First National Bank Building.

Phone 934.

Bellaire, Ohio



Compliments of

Lawrence E. Imhoff

Democratic Candidate
For Reelection to

CONGRESS



JAMES M.

FULTON

Democratic Candidate
For County

COMMISSIONER

I will be pleased to serve
you again

REFEREE—Emswiler

OFF
UMPI

PAINESVILLE LINEUP

School Colors—Red and Black

| Name | No. |
|--------------|-----|
| Bystronowsky | 34 |
| Crowther | 16 |
| *Campbell | 26 |
| Hawkins | 18 |
| Courtwright | 28 |
| *Woodford | 27 |
| **West | 32 |
| *Silverstro | 23 |
| Adams | 17 |
| Fillipi | 29 |
| *Acheson | 33 |
| *Hobbs | 14 |
| Dolee | 10 |
| Cinaglio | 11 |
| Abrahamson | 31 |
| *Farkas | 19 |
| *Rand | 21 |
| Hughes | 13 |
| *Wolff | 12 |
| Smith | 30 |
| *Nelson | 22 |
| Pasquareli | 25 |
| Salminen | 15 |
| Dowling | 20 |
| Keener | 24 |

* Years a letterman

Head Coach—Paul Moss, Purdue.
Asst. Coach—Ray George, Ohio U.



Compl

Charles

Democratic

GOV

1

| | |
|-------------|--|
| BELLAIRE | |
| PAINESVILLE | |

ALS

-McRae

H. L.—Walsh



ts of

awyer

idate For

NOR

CHEER LEADERS

Lucille Kennedy
 Barbara Houston
 Madeline Davis
 Nina Lantivica
 Joan McGhee
 Virginia Lou Sherlock

BELLAIRE LINEUP

| Position | Name | Wt. | No. |
|----------|-----------|-----|-----|
| R. E. | Robinson | 152 | 32 |
| R. T. | Beck | 170 | 17 |
| R. G. | Havelka | 151 | 19 |
| Center | Acerocco | 150 | 13 |
| L. G. | Neff | 170 | 21 |
| L. T. | English | 165 | 15 |
| L. E. | Fitch | 176 | 25 |
| Q. B. | Sadlowski | 159 | 20 |
| R. H. B. | Obejenski | 168 | 30 |
| L. H. B. | Mooney | 148 | 10 |
| F. B. | Rouscher | 173 | 24 |

Head Coach—John A. Niemiec, Notre Dame.

Asst. Coach—Steven Polinsky, Muskingum.

Asst. Coach—James A. Dixon, Wittenburg.

MANAGERS

Otis Dunfee
 Geo. Velt
 Chas. Linch
 Paul Bovenizer

| 2 | 3 | 4 | Total |
|---|---|---|-------|
| | | | |
| | | | |



E. E. TAYLOR
 Democratic Candidate
 for
COUNTY AUDITOR
 Respectfully Solicits Your
 Support
ON HIS RECORD



Compliments of
John R. Crunelle
 (Bellaire Hi Graduate)
 Democratic
 Candidate
 For
**STATE
 LEGISLATURE**
 (SECOND TERM)

NATIONAL COLLEGIATE ATHLETIC ASSOCIATION RULES

CODE OF SIGNALS FOR OFFICIALS

Pushing Movement of Hands to Front with Arms Hanging Vertical
Crawling, pushing or helping runner

Hands on Hips
Off-side and violation of kick-off formation.

Grasping of One Wrist
Holding

Horizontal Arc of Either Hand
Player illegally in motion.

Military Salute
Unnecessary roughness.

Pushing Hands Forward from Shoulders with Hands Vertical
Interference with forward pass (also pass which touches ineligible player.)

Both Arms Extended Above Head
A Score
Bringing palms of hands together after

this signal indicates safety. Sifting of hands in vertical plane above head, time out; Timekeeper answers by raising his right hand.

Sifting of Hands in Horizontal Plane
Penalty refused, Incomplete pass, play to be replayed, missed goal, etc.

Folded Arms
Delay of game or extra time-outs.

Waving Hand Behind Back
Illegal forward pass.

TO OFFICIALS

Additional signals are as follows:

1. Delay of Game or Extra Time-outs—Folded Arms (see below).
2. Clipping—Military Salute, followed by striking the back of the knee with hand.
3. Running Into or Roughing the Kicker—Military Salute followed by swinging the leg to simulate a punt.

CLYDE E. FRY

Fancy Groceries and Meats at a Reasonable Price

We Deliver

Phone 980.

4676 Jefferson Street



HAROLD WHITTAKER

Republican Candidate
For

STATE
Representative

Compliments of

T. B. PHILLIPS

County Commissioner

GET FLOWERS
FOR THE GAME

AT



The Capitol Flower Shoppe,
Bellaire



Porch
Full Back



MOONEY,
Half Back



Sadlouski
Quarterback

“MONEY TO LOAN”

. . . a personal loan is a sensible, workable plan of financing some existing opportunity of advancement.

—this bank has ample funds for personal loans that will meet the requirements co-existent with sane conservative banking principles.

—make your application today and let us discuss it with you . . .

**FIRST NATIONAL BANK
IN BELLAIRE**

**MEMBER
FEDERAL DEPOSIT INSURANCE CORP.**

VARSIITY SQUAD

Red and Black Jersey

| Name | No. | Name | No. |
|------------------------|-----|--------------------------|-----|
| Mooney, L. H. | 10 | Johnson | 29 |
| DeBlasis, L. G. | 11 | Obejenski, R. H. | 30 |
| Bumgardner, R. G. | 12 | Murray, R. H. | 31 |
| Accrocco, J. | 13 | Robinson, R. E. | 32 |
| C. Kahl, L. E. | 14 | Apicella | 33 |
| English, L. T. | 15 | Marklin, I. G. | 34 |
| Gray, L. T. | 16 | E. Accrocco | 35 |
| Beck, R. T. | 17 | V. DiPoolo, R. G. | 36 |
| Duffy, F. B. | 18 | D. Innocenzo, R. T. | 37 |
| Havelka, R. G. | 19 | Pumpa, R. E. | 38 |
| Sadlowski, Q. B. | 20 | Duda, Q. B. | 39 |
| Neff, L. G. | 21 | Nash, L. H. | 40 |
| Skorich, R. T. | 22 | Marzella | 41 |
| Radewic, C. | 23 | Adams, F. B. | 42 |
| Rouscher, F. B. | 24 | D. Fitch, R. E. | 43 |
| K. Fitch, L. E. | 25 | Newhart, R. T. | 44 |
| Moore, L. G. | 26 | R. Kahl, R. G. | 45 |
| Porch, Q. B. | 27 | Kirkland. Q. B. | 77 |
| Conklin, R. E. | 28 | Paulsena | 55 |
| | | Zacchina | 80 |

Compliments of

Grafton-Bauknecht-Mellott

FUNERAL HOME

With Cigars and Candy You Will Enjoy the Game

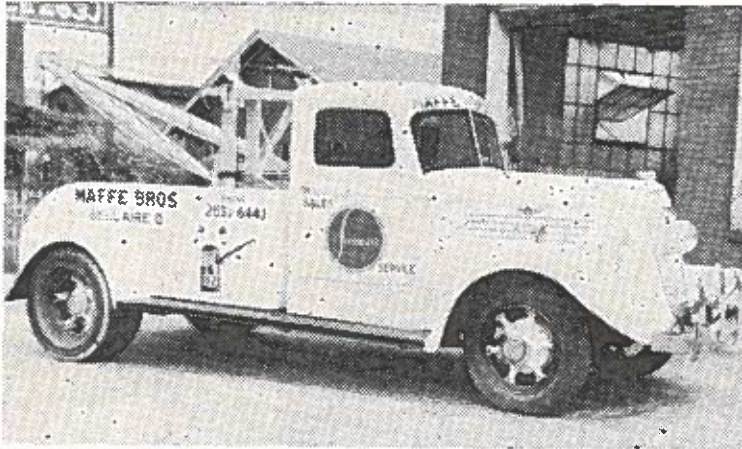
CAPITOL CONFECTIONERY

Sidewalk Material--All Builders Supplies

BELLAIRE WALLPLASTER CO.

31st and Hamilton Street.

Phone 345



MAFFE BROS.

SALES **STUDEBAKER** *SERVICE*

Phones 263-J-9186-644-J

1400 Belmont Street.

Bellaire, O.

Higrade Domestic Coal

From Shick Mine

Phone Bel. 154

Pioneer Fuel Corporation
West Bellaire

KNOW THE PENALTIES

| | |
|--|--|
| <p>Pushing, pulling, interlocked interference, etc. 15 yards</p> <p>Intentionally throwing forward pass to ground 15 yards</p> <p>Leaving field during one minute intermission 15 yards</p> <p>Men going on field without permission.... 15 yards</p> <p>More than one non-playing man, going on field 15 yards</p> <p>Coaching from sidelines 15 yards</p> <p>Hurdling, tripping, piling up 15 yards</p> <p>Unsportsmanlike conduct 15 yards</p> <p>Defense striking on head, neck or face with palm of hand 15 yards</p> <p>Man in motion on shift 15 yards</p> <p>Interference on forward pass by passing team 15 yards</p> <p>Illegal striking with hands, kneeling or kicking disqualification and loss of one-half distance to goal</p> <p>Illegal substitution 25 yards and suspension</p> <p>Clipping from behind 15 yards</p> <p>Delay in starting game or second half 25 yards</p> <p>Interference on forward pass by defense .. 1st down on spot of foul</p> <p>Forward pass touched by ineligible player, Loss of ball</p> | <p>Slugging Half distance to goal and disqualification</p> <p>Offside, both sides No penalty</p> <p>Offside 5 yards</p> <p>Holding, etc., by defensive side 5 yards</p> <p>Man in Motion—no shift 5 yards</p> <p>Crawling 5 yards</p> <p>Taking out time more than three times during half 5 yards</p> <p>Running into kicker 5 yards</p> <p>Substitute failing to report 15 yards</p> <p>Unreasonable delay in putting ball in play 5 yards</p> <p>Starting forward before ball 5 yards</p> <p>Fair catch, taking more than two steps ... 5 yards</p> <p>Attempt to draw opponents offside 5 yards</p> <p>Interference with opponents before ball is in play 5 yards</p> <p>Using flying block or flying tackle 5 yards</p> <p>Neutral zone, encroachment on 5 yards</p> <p>Player out of bounds 5 yards</p> <p>Illegal use of hands and arms by offense 15 yards</p> <p>Interference with fair catch, etc. 15 yards</p> <p>Roughing kickers 15 yards</p> <p>Substitute communicating before first play 15 yards</p> <p>Unnecessary roughness 15 yards</p> |
|--|--|

ATLANTIC GASOLINE—WILLARD BATTERIES

WM. R. PHILLIPS—Atlantic Service Station

3277 Guernsey Street, Bellaire



HAROLD P. HOOVER

REPUBLICAN CANDIDATE FOR

STATE

REPRESENTATIVE

Your Vote and Influence Respectfully Solicited

JAMES R. FITTON

Republican Candidate

FOR A FIRST TERM AS

BELMONT COUNTY COMMISSIONER

Your Vote Respectfully Solicited

After the game visit
Dankworth's Fountain
Always Welcome

COMPLIMENTS OF
Theo Robertson

Boosters for Bellaire's "Big Reds"

WIN OR LOSE, WE ARE WITH YOU

Farmers and Merchants National Bank

Bellaire, Ohio

— A FRIENDLY BANK —

MEMBER FEDERAL DEPOSIT INSURANCE CORPORATION

COMPLIMENTS OF

A. C. MURPHY
County Engineer

G & J TIRES.

G & J TUBES

**ATLANTIC SERVICE
STATION**

J. E. SCHOEN, Prop.

Phone 9138.

3880 Noble Street

**ATLANTIC MOTOR OIL.
LUBRICATION**

TONY'S

Quality Meat Market

MEATS, GROCERIES, PRODUCE

QUALITY OUR SPECIALTY

WE DELIVER.

PHONE 458

Compliments

of

Ross T. Michener

Prosecuting Attorney

Build a Home...



Or Modernize the Old One

BUT BE SURE

To Come Here For

LUMBER

MILLWORK

AND BUILDERS SUPPLIES

The W. M. Johnson Lumber Co.

Shadyside and Bellaire

Phones 801—1080-J—539

WISE'S BAKERY

Home Type Baking

3252 Guernsey Street. . . Res. Phone 307-J

IN EVENT OF CLAIM OR REMOVAL, NOTIFY

The Kern Insurance Agency,

INCORPORATED

GENERAL INSURANCE

Room 716 — 1st National Bank Bldg.

Telephone 54.

Bellaire, Ohio



Compliments of

ANTON HOICHEVAR

FREEDOM Perfect Motor Oils.

FREEDOM Gasolines

YOUNG'S SERVICE STATION

Cor. 43rd & Noble Streets.

GOODRICH Tires, Tubes & Batteries

Tire Repairs —

THIS AD WORTH 15c ON LUBRICATION

— **ACCESSORIES**

The Ohio Valley Lumber Co.

Bellaire, Ohio

Compliments of

HOWARD DUNFEE

and

The Clerk of Courts Office

L. C. SMITH & CORONA TYPEWRITERS

WHEELING TYPEWRITER EXCHANGE

30 - 14th Street - Phone 892 - Wheeling, W. Va.

Rebuilt Typewriters.

All Standard Makes Repaired.

Rentals

R. C. Allen and Victor Adding Machines

KLEMPA'S MARKET

QUALITY—GROCERIES, VEGETABLES, MEATS—QUALITY

4212 Harrison Street.

Bellaire, Ohio

THE PROGRESSIVE PRINT SHOP

Office Supplies — Good Printing

Phone 539

431 Thirty-third Street.

Bellaire, Ohio

TWENTY-ONE



DUFFY,
Full Back



ROBINSON,
End



NEFF
Guard



FITCH
End



BUMGARDNER
Guard

Hold That Line--Big Reds!

You can open a hole in that line if you hit it hard enough and have confidence in your ability to make way for the back-field to plow through.

Life is like that.

One way to be able to plow through the adversities of life is to have a savings account that will back you up in time of need.

We welcome your Savings.

The Buckeye Savings & Loan Company

Bellaire, Ohio

Safe

Sound

Secure

Bellaire

SUPPORT---The Big Reds

THEY ARE WINNERS!

SUPPORT---The Buy American Movement

Sales mean jobs if we buy American made merchandise

SUPPORT---Earl R. Lewis

Republican Candidate For

CONGRESS

He favors steady jobs for American workers by keeping out merchandise made in foreign countries.

Relief for every man who needs it. A steady job for every man who is able to work.

WHITE'S COMMUNITY MARKET

GROCERIES, MEATS, POULTRY AND VEGETABLES

YOU WILL LIKE OUR SERVICE

Phones 280 - 281. Corner Forty-third and Harrison Streets

Bellaire's Complete Food Market

IF YOU APPRECIATE

Score Board,
Flag Poles,
Loud Speaker,
Football Banquet,
Special Trains to Ferry,

Thuse Meeting Before Ferry Game,
With Fireworks,
Gift to Shoe Fund of Bellaire
Schools \$150.
St. Johns \$27.

By our record we ask your support to the Big Red
Boosters Club. Buy your membership \$1.00 per year.