

---

---

**SOUVENIR SCORE CARD**

(Compiled by the Bellaire H.Y. Club)

---

---

**COLLINGWOOD**

VS.

**BELLAIRE**

**FOOTBALL  
GAME**

B. H. S. Athletic Field

**Saturday, October 8th, 1938**

Game Called at 2:30 O'clock

---

---

**NEXT GAME OCT. 15TH—UNION vs. BELLAIRE**

**FIVE CENTS THE COPY**

---

---

---

ELECT

**John W. Bricker**



**GOVERNOR**

**OF OHIO**



NIEMIEC  
Coach

John A. Niemiec attended Bel-  
laire Hi School from 1920 to  
1924. From here he went to  
Notre Dame in 1925 to 1929  
where he obtained an A. B. De-  
gree. From 1930 to 1932 he  
coached Football, Basketball, and  
Baseball at Rice Institute, at  
Houston, Texas. Then from 1932  
to 1934 he coached at Alamo  
Heights Hi School, San Antonio,  
Texas. Prior to coming to Bel-  
laire High he coached at Colum-  
bia College, Dubuque, Iowa,  
coaching football, basketball,  
baseball, and track, from 1934 to  
1938.

Joe Accrocco, our scrappy center  
has been re-elected as Captain of  
the 1938 team.



ACCROCCO  
Center

## YEA, BIG REDS!

*A New Name...A New Face In County Politics*



## JAY E. GREEN

Republican Candidate For

## COUNTY AUDITOR

Means Economy For All

Your Support Earnestly Solicited and Greatly Appreciated

**Seeking Public Office for the First Time**

---

BELLAIRE 220.

DAIRY PRODUCTS

Best By Test

# Meadowcrest Dairy

BRIDGEPORT 21.

ICE CREAM

---

**The Cowen-Dickens Company**

INSURANCE SPECIALISTS

BELLAIRE

PHONE 97

OHIO

---

Residence  
4335 Nobie St.  
Bellaire, Ohio

**CHARLES STRAHL**

Phone  
586-M  
Bellaire, Ohio

Reasonable  
Prices

“Once a customer, always  
a customer.”

Domestic  
Coal

---

Compliments  
of  
**SHERIFF**  
**HOWARD A. DUFF**

Compliments  
of  
**JUDGE**  
**BERNARD G. WITTEN**



---

The school officials welcome you to the Bellaire Stadium for the home games of 1938. It is your loyal support which makes football a success in Bellaire. The Boys High-Y are especially grateful to all those who have helped to make this program for the games possible through advertising.



J. V. NELSON  
Supt. Bellaire Public Schools

---

# The Union Savings Bank

=====

OPEN A CHECK ACCOUNT  
FOR HOME OR BUSINESS

=====

THE YOUNG MEN'S BANK

MEMBER FEDERAL DEPOSIT INSURANCE CORP.

---

COMPLIMENTS OF

**Judge**  
**CLIFFORD L. BELT**

COMPLIMENTS OF

**Judge**  
**Harry L. Albright**

---

**The Neff Lumber Company**

Lumber  
Sand  
Gravel  
Cement  
Building Block  
Roofing

Hardware  
Paints  
Stoves  
Radios  
Washers  
Refrigerators

**"IF IT'S TO BUILD WITH WE HAVE IT"**

Yards At:

NEFFS, OHIO

and

POWHATAN, OHIO

Phone  
Bellaire 21

Phone  
Powhatan 18

---

---

# Earl J. Heil Radio and Electric Co.

## NORGE AND PHILCO PRODUCTS

"We Sell the Best and Service the Rest"

3281 Belmont Street      Phone 462      Bellaire, Ohio

---

### BELLAIRE HIGH SCHOOL OFFICIAL FOOTBALL SCHEDULE 1938 1938

Saturday, September 17	SHADYSIDE	- - -	Home	Saturday, October 22	PAINESVILLE	- - - -	Home
Saturday, September 24	BRIDGEPORT	- - -	Home	Saturday, October 29	MARTINS FERRY	- - - -	Away
Saturday, October 1	TILTONSVILLE	- - -	Home	Saturday, November 5	NEW PHILADELPHIA	- - - -	Away
Saturday, October 8	COLLINGWOOD CLE.	- - - -	Home	Saturday, November 12	YOUNGSTOWN E.	- - -	Home
Saturday, October 15	UNION	- - - -	Home	Thursday, November 24	WHEELING	- - - -	Away

---

COMPLIMENTS OF

**CORRELL PHOTO SERVICE**

**FILM SERVICE**

Dankworth Bldg.

Phone 92-J

---

**Exide Batteries**

**Expert Lubrication**

**WHITE ROSE GASOLINE**

**Jeffers Bros.**

Phone 716-J.

38th and Noble

---

SEVEN

Compliments of

THE  
McCLAIN MOTOR CO.

Swift To Serve You

**ALBERT VASEK & SON**

GROCERIES AND MEATS

Tele. 570-M

4403 Harrison Street

BELLAIRE, OHIO

Compliments of

**JESSE A. WILSON**

BELMONT COUNTY RECORDER

**YELLS!!!**

Oh! Gee whiz!  
Look at that score  
We know it's good!  
But we want more!!!

Baby's in a high chair  
Who put her there?  
Ma! Pa?  
Sis! Boom! Bah!  
Bellaire High School  
Rah! Rah! Rah!

Ash can! Tin can!  
Who can! Bellaire can!  
Yeh Big Reds!!!

We've got a school!  
We've got a yell!

We've got a team!  
That fights like?  
Hit 'em high,  
Hit 'em low  
Come on Bellaire!  
Let's Go!!!

Fight! Fight! Big Reds  
Fight! Fight! Big Reds  
Come on! Fight!!  
Strawberry Shortcake  
Huckleberry Pie  
V - I - C - T - O - R - Y

Are we in it?  
Yes! I guess  
For there's the team of B. H. S.  
Yeh! Big Reds!

T - E - A - M  
T - E - A - M  
T - E - A - M  
Fight! Fight! Fight!  
Yeh Bellaire!  
Yeh Bellaire!  
Beat (Opponents)!!!

Rah! Rah! Rah! Rah!  
Rah! Rah! Rah! Rah!  
Bellaire High School!  
Bellaire High School!  
Team! Team! Team!

Eow! Big Reds!  
Eow! Big Reds!  
Eow! Big Reds!  
V - i - c - t - o - r - y

**THIS ADVERTISEMENT IS WORTH 10c TO YOU**

A reduction of 10c on a pair of \$1.00 or 79c fine  
"Majud" silk hose by bringing this advertisement for  
3 days after any game.

**at BLUMS**

3172 Belmont



---

**Books Features Sell People the First Time**

# **BOOK'S SHOES**

**Books Quality Brings Them Back**

**1051 Main Street  
Wheeling**

**3242 Belmont Street  
Bellaire**

---

Compliments  
of

**THE ZWEIG FURNITURE  
STORE**

Compliments  
of

**H. J. FINDLEY  
County Treasurer**



**FITCH**  
End



**NEFF**  
Guard



**BUMGARDNER**  
Guard

---

Compliments  
of  
**GEO. ROBINSON**

---

Jewelers in Bellaire  
Since 1898

**Phillips Jewelry Store**

“The City Hall Jewelers”      Bellaire, O.

Phone 268-J

---

Compliments  
of  
**CAPITOL AND  
TEMPLE  
THEATERS**

---

Compliments  
of

**THE HUB**

Clothing

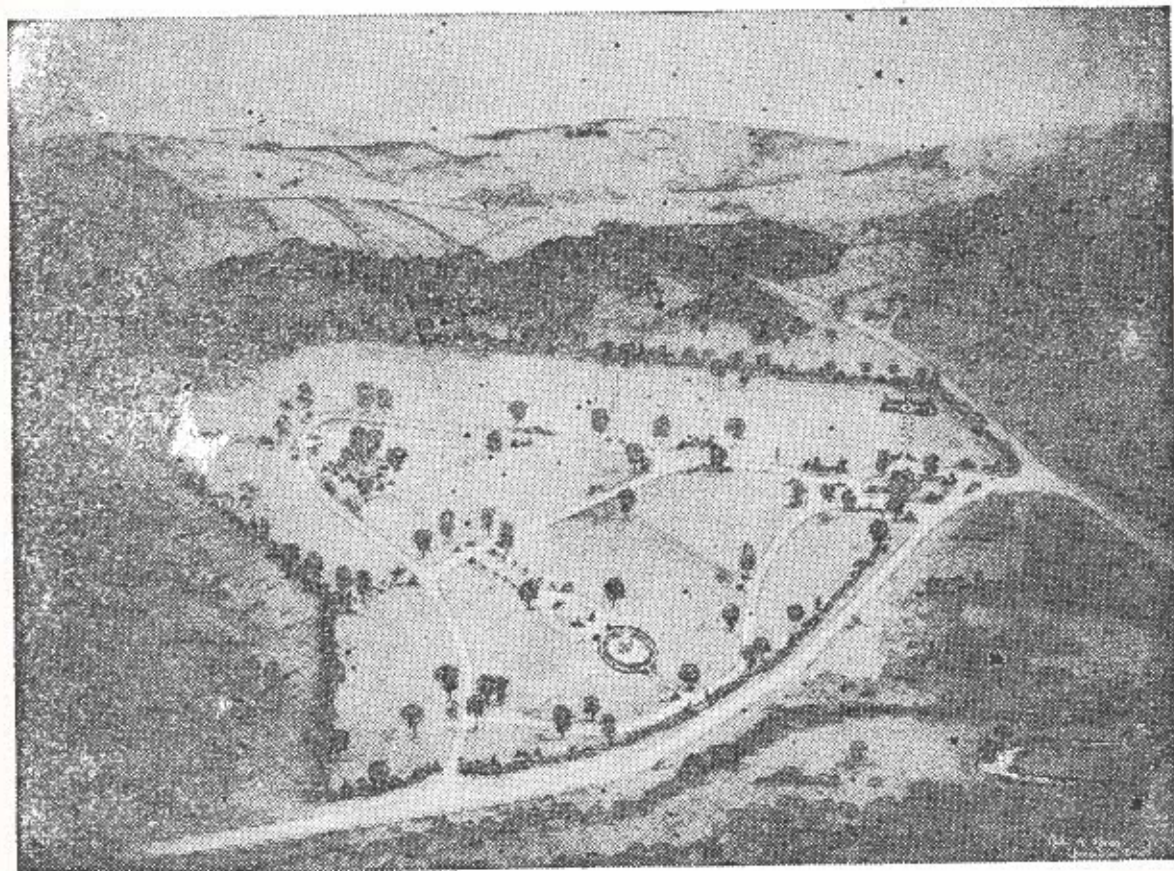
Furnishings

Bellaire, Ohio

---

INVEST IN REST BEFORE  
REST INVESTS IN YOU

Where the Memory of Beautiful Lives will Be Kept Beautiful Always



A Park So Beautiful

The New Idea

Perpetual Care

Lawn  
Type

Low  
Costs

We urge you to purchase your burial estate now—before you need it. It will save heartache, eliminate added expense, confusion and worry at time of death.

## Belmont County Memorial Park

First National Bank Building.

Phone 934.

Bellaire, Ohio





Compliments of

## Lawrence E. Imhoff

Democratic Candidate  
For Reelection to

**CONGRESS**



**JAMES M.**

**FULTON**

Democratic Candidate  
For County

**COMMISSIONER**

I will be pleased to serve  
you again

REFEREE--A. B. Long  
Newark

OFF  
UMPIRE--E  
Sebr

## COLLINWOOD LINEUP

School Colors—Grey and Blue

Pos.	Name	No.
L. E.	Rose	9
L. T.	Cutler	40
L. G.	Petrilli	15
C	Dickey	35
R. G.	Yanchar	16
R. T.	Post	44
R. E.	Ohara	22
Q. B.	Shelko	26
L. H.	Kukla	14
R. H.	Caputo	33
F.	Benedict	28

### SUBSTITUTES

J. Rose	39
Flanagan	25
Brodnik	19
Ziolakowski	24
Sustersic	23
McWatters	18
Hollowenko	36
Johnson	41
Johngrass	43
Scarano	40
Glicker	44
Heard	32
Werneke	27
Trometer	34
Vansykle	20
Klamer	29
Guiliano	12
Dicesar	13
Baffa	20
Schaefer	38
Botzenhart	17
Reider	42

Head Coach—Newell, Ohio Uni.  
Asst. Coach—Vaccarella, Miami



Compl

**Charles**

Democratic

**GOV**

1

BELLAIRE	
COLLINWOOD	

**IALS**

e Howell

H. L.—Stanton Jones  
Columbus



**CHEER LEADERS**

- Lucille Kennedy
- Barbara Houston
- Madeline Davis
- Nina Lantivica
- Clyde Rutter

**BELLAIRE LINEUP**

Position	Name	Wt.	No.
R. E.	Robinson	152	32
R. T.	Beck	170	17
R. G.	Havelka	151	19
Center	Accrocco	150	13
L. G.	Neff	170	21
L. T.	English	165	15
L. E.	Fitch	176	25
Q. B.	Sadlowski	159	20
R. H. B.	Obejenski	168	30
L. H. B.	Mooney	148	10
F. B.	Rouscher	173	24

**MANAGERS**

- Otis Dunfee
- Geo. Velt
- Chas. Linch
- Paul Bovenizer

nts of  
**Sawyer**  
andidate For  
**NOR**

2	3	4	Total



**E. E. TAYLOR**  
Democratic Candidate  
for  
**COUNTY AUDITOR**  
Respectfully Solicits Your  
Support  
**ON HIS RECORD**



Compliments of  
**John R. Cruelle**  
(Bellaire Hi Graduate)  
Democratic  
Candidate  
For  
**STATE  
LEGISLATURE**  
(SECOND TERM)



# NATIONAL COLLEGIATE ATHLETIC ASSOCIATION RULES

## CODE OF SIGNALS FOR OFFICIALS

**Pushing Movement of Hands to Front with Arms Hanging Vertical**  
Crawling, pushing or helping runner

**Hands on Hips**  
Off-side and violation of kick-off formation.

**Grasping of One Wrist**  
Holding

**Horizontal Arc of Either Hand**  
Player illegally in motion.

**Military Salute**  
Unnecessary roughness.

**Pushing Hands Forward from Shoulders with Hands Vertic.**  
Interference with forward pass (also pass which touches ineligible player.)

**Both Arms Extended Above Head**  
A Score  
Bringing palms of hands together after

this signal indicates safety. Sifting of hands in vertical plane above head, time out; Timekeeper answers by raising his right hand.

**Sifting of Hands in Horizontal Plane**  
Penalty refused, incomplete pass, play to be replayed, missed goal, etc.

**Folded Arms**  
Delay of game or extra time-outs.

**Waving Hand Behind Back**  
Illegal forward pass.

### TO OFFICIALS

Additional signals are as follows:

1. Delay of Game or Extra Time-outs—Folded Arms (see below).
2. Clipping—Military Salute, followed by striking the back of the knee with hand.
3. Running Into or Roughing the Kicker—Military Salute followed by swinging the leg to simulate a punt.

## CLYDE E. FRY

Fancy Groceries and Meats at a Reasonable Price

We Deliver

Phone 980.

4676 Jefferson Street



### HAROLD WHITTAKER

Republican Candidate

For

STATE Representative

Compliments of

T. B. PHILLIPS

County Commissioner

GET FLOWERS  
FOR THE GAME

AT



The Capitol Flower Shoppe  
Bellaire



BECK,  
Tackie



MURRY,  
Half Back



DUFFY,  
Full Back



PUMPA,  
End

---

## “MONEY TO LOAN”

. . . a personal loan is a sensible, workable plan of financing some existing opportunity of advancement.

—this bank has ample funds for personal loans that will meet the requirements co-existent with sane conservative banking principles.

—make your application today and let us discuss it with you . . .

**FIRST NATIONAL BANK  
IN BELLAIRE**

MEMBER  
FEDERAL DEPOSIT INSURANCE CORP.

---

---

# VARSIITY SQUAD

Red or White Jersey

Name	No.	Name	No.
Mooney, L. H. ....	10	Johnson .....	29
DeBlasis, L. G. ....	11	Obejenski, R. H. ....	30
Bumgardner, R. G. ....	12	Murray, R. H. ....	31
Acerocco, J. ....	13	Robinson, R. E. ....	32
C. Kahl, L. E. ....	14	Apicella .....	33
English, L. T. ....	15	Marklin, L. G. ....	34
Gray, L. T. ....	16	E. Acerocco .....	35
Beck, R. T. ....	17	V. DiPoolo, R. G. ....	36
Duffy, F. B. ....	18	D. Innocenzo, R. T. ....	37
Havelka, R. G. ....	19	Pumpa, R. E. ....	38
Sadlowski, Q. B. ....	20	Duda, Q. B. ....	39
Neff, L. G. ....	21	Nash, L. H. ....	40
Skorich, R. T. ....	22	Marzella .....	41
Radewic, C. ....	23	Adams, F. B. ....	42
Rouscher, F. B. ....	24	D. Fitch, R. E. ....	43
K. Fitch, L. E. ....	25	Newhart, R. T. ....	44
Moore, L. G. ....	26	R. Kahl, R. G. ....	45
Porch, Q. B. ....	27	Kirkland, Q. B. ....	77
Conklin, R. E. ....	28	Paulsena .....	55
		Zacchina .....	80

---

Compliments of

# Grafton-Bauknecht-Mellott

## FUNERAL HOME

---

With Cigars and Candy You Will Enjoy the Game

# CAPITOL CONFECTIONERY

---

Sidewalk Material—All Builders Supplies

## BELLAIRE WALLPLASTER CO.

31st and Hamilton Street.

Phone 345



# MAFFE BROS.

*SALES*    **STUDEBAKER**    *SERVICE*

Phones 263-J-9186-644-J

1400 Belmont Street.

Bellaire, O.

---

## Higrade Domestic Coal

From Shick Mine

Phone Bel. 154

**Pioneer Fuel Corporation**  
**West Bellaire**



## KNOW THE PENALTIES

Pushing, pulling, interlocked interference, etc. .... 15 yards  
 Intentionally throwing forward pass to ground ..... 15 yards  
 Leaving field during one minute intermission ..... 15 yards  
 Man going on field without permission.... 15 yards  
 More than one non-playing man going on field ..... 15 yards  
 Coaching from sidelines ..... 15 yards  
 Hurdling, tripping, piling up ..... 15 yards  
 Unsportsmanlike conduct ..... 15 yards  
 Defense striking on head, neck or face with palm of hand ..... 15 yards  
 Man in motion on shift ..... 15 yards  
 Interference on forward pass by passing team ..... 15 yards  
 Illegal striking with hands, kneeling or kicking ..... disqualification and loss of one-half distance to goal  
 Illegal substitution ..... 25 yards and suspension  
 Clipping from behind ..... 15 yards  
 Delay in starting game or second half .... 25 yards  
 Interference on forward pass by defense ..  
 ..... 1st down on spot of foul  
 Forward pass touched by ineligible player,  
 ..... Loss of ball

Slugging ..... Half distance to goal and disqualification  
 Offside, both sides ..... No penalty  
 Offside ..... 5 yards  
 Holding, etc., by defensive side ..... 5 yards  
 Man in Motion—no shift ..... 5 yards  
 Crawling ..... 5 yards  
 Taking out time more than three times during half ..... 5 yards  
 Running into kicker ..... 5 yards  
 Substitute failing to report ..... 15 yards  
 Unreasonable delay in putting ball in play ..... 5 yards  
 Starting forward before ball ..... 5 yards  
 Fair catch, taking more than two steps ... 5 yards  
 Attempt to draw opponents offside ..... 5 yards  
 Interference with opponents before ball is in play ..... 5 yards  
 Using flying block or flying tackle ..... 5 yards  
 Neutral zone, encroachment on ..... 5 yards  
 Player out of bounds ..... 5 yards  
 Illegal use of hands and arms by offense ..... 15 yards  
 Interference with fair catch, etc. .... 15 yards  
 Roughing kickers ..... 15 yards  
 Substitute communicating before first play ..... 15 yards  
 Unnecessary roughness ..... 15 yards

## ATLANTIC GASOLINE—WILLARD BATTERIES

**WM. R. PHILLIPS—Atlantic Service Station**

3277 Guernsey Street, Bellaire



## JAMES R. FITTON

Republican Candidate

FOR A FIRST TERM AS

## BELMONT COUNTY COMMISSIONER

Your Vote Respectfully Solicited

**HAROLD P. HOOVER**

REPUBLICAN CANDIDATE FOR

**STATE**

**REPRESENTATIVE**

Your Vote and Influence Respectfully Solicited



---

After the game visit  
**Dankworth's Fountain**  
Always Welcome

COMPLIMENTS OF  
**Theo Robertson**

---

**Boosters for Bellaire's "Big Reds"**

WIN OR LOSE, WE ARE WITH YOU

---

**Farmers and Merchants National Bank**

Bellaire, Ohio

---

— A FRIENDLY BANK —

---

MEMBER FEDERAL DEPOSIT INSURANCE CORPORATION

---

COMPLIMENTS OF

**A. C. MURPHY**  
**County Engineer**

G & J TIRES.

G & J TUBES

**ATLANTIC SERVICE  
STATION**

J. E. SCHOEN, Prop.

Phone 9138.

3880 Noble Street

**ATLANTIC MOTOR OIL.  
LUBRICATION**

**TONY'S**

**Quality Meat Market**

MEATS, GROCERIES, PRODUCE

QUALITY OUR SPECIALTY

WE DELIVER.

PHONE 458

Compliments  
of

**Ross T. Michener**

**Prosecuting Attorney**

**Build a Home...**



Or Modernize the Old One

**BUT BE SURE**

To Come Here For

LUMBER

MILLWORK

AND BUILDERS SUPPLIES

**The W. M. Johnson Lumber Co.**

Shadyside and Bellaire

Phones 801—1080-J—539

**WISE'S BAKERY**

**Home Type Baking**

3252 Guernsey Street. . . Res. Phone 307-J

IN EVENT OF CLAIM OR REMOVAL, NOTIFY

**The Kern Insurance Agency,**

INCORPORATED

**GENERAL INSURANCE**

Room 716 — 1st National Bank Bldg.

Telephone 54.

Bellaire, Ohio



Compliments of

**ANTON HOCHEVAR**

**FREEDOM Perfect Motor Oils.**

**FREEDOM Gasolines**

**YOUNG'S SERVICE STATION**

Cor. 43rd & Noble Streets.

GOODRICH Tires, Tubes & Batteries

Tire Repairs

— **THIS AD WORTH 15c ON LUBRICATION** —

**ACCESSORIES**

**The Ohio Valley Lumber Co.**

Bellaire, Ohio

Compliments of

**HOWARD DUNFEE**

and

**The Clerk of Courts Office**

**L. C. SMITH & CORONA TYPEWRITERS**

**WHEELING TYPEWRITER EXCHANGE**

30 - 14th Street - Phone 892 - Wheeling, W. Va.

Rebuilt Typewriters.

All Standard Makes Repaired.

Rentals

R. C. Allen and Victor Adding Machines

**KLEMPA'S MARKET**

QUALITY—GROCERIES, VEGETABLES, MEATS—QUALITY

4212 Harrison Street.

Bellaire, Ohio

**THE PROGRESSIVE PRINT' SHOP**

Office Supplies — Good Printing

Phone 539

431 Thirty-third Street.

Bellaire, Ohio



C. KAHL,  
End



MOORE,  
Guard



ROBINSON,  
End



R. KAHL,  
Tackle

---

## Hold That Line--Big Reds!

You can open a hole in that line if you hit it hard enough and have confidence in your ability to make way for the back-field to plow through.

Life is like that.

One way to be able to plow through the adversities of life is to have a savings account that will back you up in time of need.

We welcome your Savings.

## The Buckeye Savings & Loan Company

Bellaire, Ohio

Safe

Sound

Secure

---

Bellaire

## **SUPPORT---The Big Reds**

THEY ARE WINNERS!

---

---

## **SUPPORT---The Buy American Movement**

Sales mean jobs if we buy American made merchandise

---

---

## **SUPPORT---Earl R. Lewis**

Republican Candidate For

# **CONGRESS**

---

---

He favors steady jobs for American workers by keeping out merchandise made in foreign countries.

Relief for every man who needs it. A steady job for every man who is able to work.



---

# WHITE'S COMMUNITY MARKET

## GROCERIES, MEATS, POULTRY AND VEGETABLES

YOU WILL LIKE OUR SERVICE

Phones 280 - 281. . . . . Corner Forty-third and Harrison Streets

Bellaire's Complete Food Market

---

### IF YOU APPRECIATE

Score Board,	Thuse Meeting Before Ferry Game,
Flag Poles,	With Fireworks,
Loud Speaker,	Gift to Shoe Fund of Bellaire
Football Banquet,	Schools \$150.
Special Trains to Ferry,	St. Johns \$27.

By our record we ask your support to the Big Red Boosters Club. Buy your membership \$1.00 per year.