
SOUVENIR SCORE CARD

(Compiled by the Bellaire Hi-Y Club)

UNION
VS.
BELLAIRE

FOOTBALL GAME

B. H. S. Athletic Field

Saturday, October 15th, 1938

Game Called at 2:30 O'clock

NEXT GAME OCT. 22ND—PAINESVILLE vs. BELLAIRE

FIVE CENTS THE COPY

ELECT

John W. Bricker



GOVERNOR

OF OHIO



NIEMIEC
Coach

John A. Niemiec attended Bel-
laire Hi School from 1920 to
1924. From here he went to
Notre Dame in 1925 to 1929
where he obtained an A. B. De-
gree. From 1930 to 1932 he
coached Football, Basketball, and
Baseball at Rice Institute, at
Houston, Texas. Then from 1932
to 1934 he coached at Alamo
Heights Hi School, San Antonio,
Texas. Prior to coming to Bel-
laire High he coached at Colum-
bia College, Dubuque, Iowa,
coaching football, basketball,
baseball, and track, from 1934 to
1938.

Joe Accrocco, our scrappy center
has been re-elected as Captain of
the 1938 team.



ACCROCCO
Center

YEA, BIG REDS!

A New Name...A New Face In County Politics

JAY E. GREEN

Republican Candidate For

COUNTY AUDITOR

Means Economy For All

Your Support Earnestly Solicited and Greatly Appreciated

Seeking Public Office for the First Time

BELLAIRE 220.

DAIRY PRODUCTS

Best By Test

Meadowcrest Dairy

BRIDGEPORT 21.

ICE CREAM

The Cowen-Dickens Company

INSURANCE SPECIALISTS

BELLAIRE

PHONE 97

OHIO

Residence
4335 Noble St.
Bellaire, Ohio

CHARLES STRAHL

Phone
586-M
Bellaire, Ohio

Reasonable
Prices

“Once a customer, always
a customer.”

Domestic
Coal

Compliments
of

SHERIFF
HOWARD A. DUFF

Compliments
of

JUDGE
BERNARD G. WITTEN

The school officials welcome you to the Bellaire Stadium for the home games of 1938. It is your loyal support which makes football a success in Bellaire. The Boys High-Y are especially grateful to all those who have helped to make this program for the games possible through advertising.



J. V. NELSON
Supt. Bellaire Public Schools

The Union Savings Bank

=====

OPEN A CHECK ACCOUNT
FOR HOME OR BUSINESS

=====

THE YOUNG MEN'S BANK

MEMBER FEDERAL DEPOSIT INSURANCE CORP.

COMPLIMENTS OF

Judge
CLIFFORD L. BELT

COMPLIMENTS OF

Judge
Harry L. Albright

The Neff Lumber Company

Lumber
Sand
Gravel
Cement
Building Block
Roofing

Hardware
Paints
Stoves
Radios
Washers
Refrigerators

"IF IT'S TO BUILD WITH WE HAVE IT"

NEFFS, OHIO

Yards At:

and

POWHATAN, OHIO

Phone
Bellaire 21

Phone
Powhatan 18

Earl J. Heil Radio and Electric Co.

NORGE AND PHILCO PRODUCTS

"We Sell the Best and Service the Rest"

3281 Belmont Street Phone 462 Bellaire, Ohio

BELLAIRE HIGH SCHOOL OFFICIAL FOOTBALL SCHEDULE 1938 1938

SHADYSIDE				PAINESVILLE			
Saturday, September 17	- - -	Home		Saturday, October 22	- - -	Home	
BRIDGEPORT				MARTINS FERRY			
Saturday, September 24	- - -	Home		Saturday, October 29	- - -	Away	
TILTONSVILLE				NEW PHILADELPHIA			
Saturday, October 1	- - -	Home		Saturday, November 5	- - -	Away	
COLLINGWOOD CLE.				YOUNGSTOWN E.			
Saturday, October 8	- - -	Home		Saturday, November 12	- - -	Home	
UNION				WHEELING			
Saturday, October 15	- - -	Home		Thursday, November 24	- - -	Away	

COMPLIMENTS OF

CORRELL PHOTO SERVICE

FILM SERVICE

Dankworth Bldg.

Phone 92-J

Exide Batteries

Expert Lubrication

WHITE ROSE GASOLINE

Jeffers Bros.

Phone 716-J.

38th and Noble

SEVEN

Compliments of

THE
McCLAIN MOTOR CO.

Swift To Serve You

ALBERT VASEK & SON

GROCERIES AND MEATS

Tele. 570-M

4403 Harrison Street

BELLAIRE, OHIO

Compliments of

JESSE A. WILSON

BELMONT COUNTY RECORDER

YELLS!!!

Oh! Gee whiz!
Look at that score
We know it's good!
But we want more!!!

Baby's in a high chair
Who put her there?
Ma? Pa?
S's! Boom! Bah!
Bellaire High School
Rah! Rah! Rah!

Ash can! Tin can!
Who can! Bellaire can!
Yeh Big Reds!!!

We've got a school!
We've got a yell!

We've got a team!
That fights like?
Hit 'em high,
Hit 'em low
Come on Bellaire!
Let's Go!!!

Fight! Fight! Big Reds
Fight! Fight! Big Reds
Come on! Fight!!
Strawberry Shortcake
Huckleberry Pie
V - I - C - T - O - R - Y

Are we in it?
Yes! I guess
For there's the team of B. H. S.
Yeh! Big Reds!

T - E - A - M
T - E - A - M
T - E - A - M
Fight! Fight! Fight!
Yeh Bellaire!
Yeh Bellaire!
Beat (Opponents)!!!

Rah! Rah! Rah! Rah!
Rah! Rah! Rah! Rah!
Bellaire High School!
Bellaire High School!
Team! Team! Team!

Eow! Big Reds!
Eow! Big Reds!
Eow! Big Reds!
V - i - e - t - o - r - y

THIS ADVERTISEMENT IS WORTH 10c TO YOU

A reduction of 10c on a pair of \$1.00 or 79c fine
"Majud" silk hose by bringing this advertisement for
3 days after any game.

at BLUMS

3172 Belmont

Books Features Sell People the First Time

BOOK'S SHOES

Books Quality Brings Them Back

1051 Main Street
Wheeling

3242 Belmont Street
Bellaire

Compliments
of

**THE ZWEIG FURNITURE
STORE**

Compliments
of

**H. J. FINDLEY
County Treasurer**

MEMBERS OF BOARD OF EDUCATION



Wm. SIDDALL



H. P. RODEWIG



GEO. T. ROBINSON

Compliments
of
GEO. ROBINSON

Compliments
of
**CAPITOL AND
TEMPLE
THEATERS**

Jewelers in Bellaire
Since 1893

Phillips Jewelry Store

“The City Hall Jewelers” Bellaire, O.

Phone 268-J

Compliments
of

THE HUB

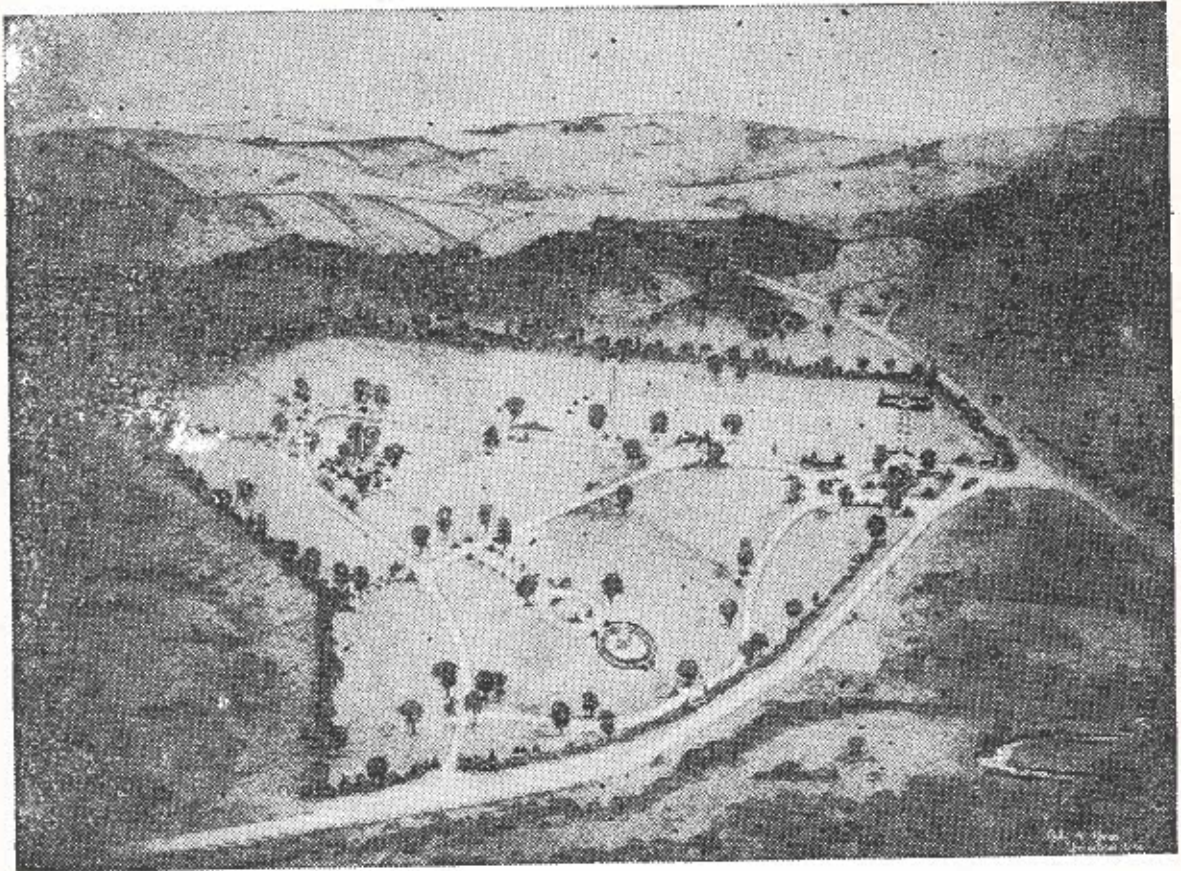
Clothing

Furnishings

Bellaire, Ohio

INVEST IN REST BEFORE
REST INVESTS IN YOU

Where the Memory of Beautiful Lives will Be Kept Beautiful Always



A Park So Beautiful

The New Idea

Perpetual Care

Lawn
Type

Low
Costs

We urge you to purchase your burial estate now—before you need it. It will save heartache, eliminate added expense, confusion and worry at time of death.

Belmont County Memorial Park

First National Bank Building.

Phone 934.

Bellaire, Ohio



Compliments of
Lawrence E. Imhoff
 Democratic Candidate
 For Reelection to
CONGRESS



JAMES M.
FULTON
 Democratic Candidate
 For County
COMMISSIONER

I will be pleased to serve
 you again

OFFI
 REFEREE—Walter Heil UMPIR

UNION LINEUP

School Colors—Orange and Black

Position	Name	Wt.	No.
L. E.	Krznarich	165	22
L. T.	Telinski	170	15
L. G.	Sparachane	158	2
Center	Martin	145	9
R. G.	Butts	150	6
R. T.	Polis	160	21
R. E.	Skvarka	146	5
L. H. B.	Helinski	160	7
R. H. B.	Kopec	168	10
Q. B.	Walley	140	14
F. B.	Thomas	155	11

SUBSTITUTES

Cochrane	162	4
Geogline	168	20
Graski	155	12
Kendzierski	140	18
Kuhayada	140	1
McElroy	155	8
Scanlon	155	13
Slie	170	17
Szafron	153	3
White	165	19
Zatezola	165	16



Head Coach—Irvin Howell, W. Va.
 Wesleyan.
 Asst. Coach—Harlan Nelson, Ohio
 University

Compli
Charles
 Democratic
GOVE

1

BELLAIRE	
UNION	

LS

milletti H. L.—Galagher



CHEER LEADERS

- Lucille Kennedy
- Barbara Houston
- Madeline Davis
- Nina Lantivica
- Clyde Rutter
- Rolland Connors

BELLAIRE LINEUP

Position	Name	Wt.	No.
R. E.	Robinson	152	32
R. T.	Beck	170	17
R. G.	Havelka	151	19
Center	Acrocco	150	13
L. G.	Neff	170	21
L. T.	English	165	15
L. E.	Fitch	176	25
Q. B.	Sadlowski	159	20
R. H. B.	Obejenski	168	30
L. H. B.	Mooney	148	10
F. B.	Rouscher	173	24

MANAGERS

- Otis Dunfee
- Geo. Velt
- Chas. Linch
- Paul Bovenizer

of
wyer
date For
OR

3 4 Total



E. E. TAYLOR
Democratic Candidate
for
COUNTY AUDITOR

Respectfully Solicits Your
Support
ON HIS RECORD



Compliments of
John R. Crunelle
(Bellaire Hi Graduate)

Democratic
Candidate
For
**STATE
LEGISLATURE**

(SECOND TERM)

NATIONAL COLLEGIATE ATHLETIC ASSOCIATION RULES

CODE OF SIGNALS FOR OFFICIALS

Pushing Movement of Hands to Front with Arms Hanging Vertical
Crawling, pushing or helping runner

Hands on Hips
Off-side and violation of kick-off formation.

Grasping of One Wrist
Holding

Horizontal Arc of Either Hand
Player illegally in motion.

Military Salute
Unnecessary roughness.

Pushing Hands Forward from Shoulders with Hands Vertic.
Interference with forward pass (also pass which touches ineligible player.)

Both Arms Extended Above Head
A Score
Bringing palms of hands together after

this signal indicates safety. Sifting of hands in vertical plane above head, time out; Timekeeper answers by raising his right hand.

Sifting of Hands in Horizontal Plane
Penalty refused, Incomplete pass, play to be replayed, missed goal, etc.

Folded Arms
Delay of game or extra time-outs.

Waving Hand Behind Back
Illegal forward pass.

TO OFFICIALS

Additional signals are as follows:

1. Delay of Game or Extra Time-outs—Folded Arms (see below).
2. Clipping—Military Salute, followed by striking the back of the knee with hand.
3. Running Into or Roughing the Kicker—Military Salute followed by swinging the leg to simulate a punt.

CLYDE E. FRY

Fancy Groceries and Meats at a Reasonable Price

We Deliver

Phone 980.

4676 Jefferson Street



HAROLD WHITTAKER

Republican Candidate
For

STATE
Representative

Compliments of

T. B. PHILLIPS

County Commissioner

GET FLOWERS
FOR THE GAME

AT



The Capitol Flower Shoppe
Bellaire



GRACE PRICE
Asst. Principal of High School



K. G. COOPER
Member of Board of Education



JOE MACK
Member of Board of Education

“MONEY TO LOAN”

. . . a personal loan is a sensible, workable plan of financing some existing opportunity of advancement.

—this bank has ample funds for personal loans that will meet the requirements co-existent with sane conservative banking principles.

—make your application today and let us discuss it with you . . .

FIRST NATIONAL BANK
IN BELLAIRE

MEMBER
FEDERAL DEPOSIT INSURANCE CORP.

VARSIITY SQUAD

Red or White Jersey

Name	No.	Name	No.
Mooney, L. H.	10	Johnson	29
DeBlasis, L. G.	11	Obejenski, R. H.	30
Bumgardner, R. G.	12	Murray, R. H.	31
Accrocco, J.	13	Robinson, R. E.	32
C. Kahl, L. E.	14	Apicella	33
English, L. T.	15	Marklin, L. G.	34
Gray, L. T.	16	E. Accrocco	35
Beck, R. T.	17	V. DiPoolo, R. G.	36
Duffy, F. B.	18	D. Innocenzo, R. T.	37
Havelka, R. G.	19	Pumpa, R. E.	38
Sadlowski, Q. B.	20	Duda, Q. B.	39
Neff, L. G.	21	Nash, L. H.	40
Skorich, R. T.	22	Marzella	41
Radewic, C.	23	Adams, F. B.	42
Rouscher, F. B.	24	D. Fitch, R. E.	43
K. Fitch, L. E.	25	Newhart, R. T.	44
Moore, L. G.	26	R. Kahl, R. G.	45
Porch, Q. B.	27	Kirkland, Q. B.	77
Conklin, R. E.	28	Paulsena	55
		Zacchina	80

Compliments of

Grafton-Bauknecht-Mellott

FUNERAL HOME

With Cigars and Candy You Will Enjoy the Game

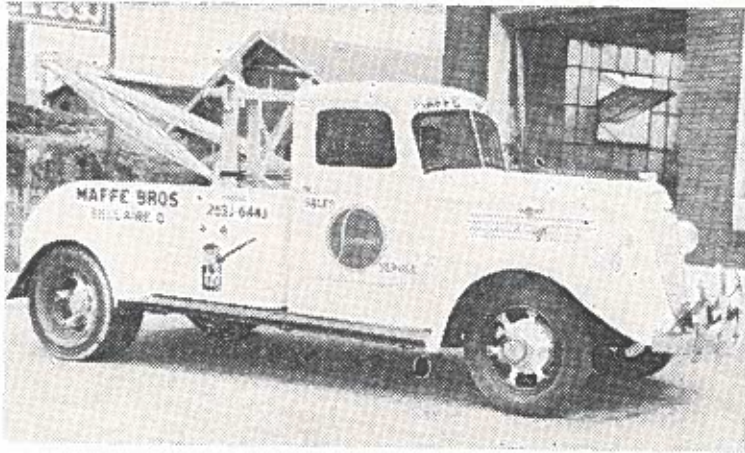
CAPITOL CONFECTIONERY

Sidewalk Material—All Builders Supplies

BELLAIRE WALLPLASTER CO.

31st and Hamilton Street.

Phone 345



MAFFE BROS.

SALES **STUDEBAKER** *SERVICE*

Phones 263-J-9186-644-J

1400 Belmont Street.

Bellaire, O.

Higrade Domestic Coal

From Shick Mine

Phone Bel. 154

Pioneer Fuel Corporation

West Bellaire

KNOW THE PENALTIES

<p>Pushing, pulling, interlocked interference, etc. 15 yards</p> <p>Intentionally throwing forward pass to ground 15 yards</p> <p>Leaving field during one minute intermission 15 yards</p> <p>Man going on field without permission.... 15 yards</p> <p>More than one non-playing man, going on field 15 yards</p> <p>Coaching from sidelines 15 yards</p> <p>Hurdling, tripping, piling up 15 yards</p> <p>Unsportsmanlike conduct 15 yards</p> <p>Defense striking on head, neck or face with palm of hand 15 yards</p> <p>Man in motion on shift 15 yards</p> <p>Interference on forward pass by passing team 15 yards</p> <p>Illegal striking with hands, kneeling or kicking disqualification and loss of one-half distance to goal</p> <p>Illegal substitution 25 yards and suspension</p> <p>Clipping from behind 15 yards</p> <p>Delay in starting game or second half 25 yards</p> <p>Interference on forward pass by defense 1st down on spot of foul</p> <p>Forward pass touched by ineligible player; Loss of ball</p>	<p>Slugging Half distance to goal and disqualification</p> <p>Offside, both sides No penalty</p> <p>Offside 5 yards</p> <p>Holding, etc., by defensive side 5 yards</p> <p>Man in Motion—no shift 5 yards</p> <p>Crawling 5 yards</p> <p>Taking out time more than three times during half 5 yards</p> <p>Running into kicker 5 yards</p> <p>Substitute failing to report 15 yards</p> <p>Unreasonable delay in putting ball in play 5 yards</p> <p>Starting forward before ball 5 yards</p> <p>Fair catch, taking more than two steps ... 5 yards</p> <p>Attempt to draw opponents offside 5 yards</p> <p>Interference with opponents before ball is in play 5 yards</p> <p>Using flying block or flying tackle 5 yards</p> <p>Neutral zone, encroachment on 5 yards</p> <p>Player out of bounds 5 yards</p> <p>Illegal use of hands and arms by offense 15 yards</p> <p>Interference with fair catch, etc. 15 yards</p> <p>Roughing kickers 15 yards</p> <p>Substitute communicating before first play 15 yards</p> <p>Unnecessary roughness 15 yards</p>
--	--

ATLANTIC GASOLINE—WILLARD BATTERIES

WM. R. PHILLIPS—Atlantic Service Station

3277 Guernsey Street, Bellaire



JAMES R. FITTON

Republican Candidate

FOR A FIRST TERM AS

BELMONT COUNTY COMMISSIONER

Your Vote Respectfully Solicited

HAROLD P. HOOVER

REPUBLICAN CANDIDATE FOR

STATE

REPRESENTATIVE

Your Vote and Influence Respectfully Solicited

After the game visit
Dankworth's Fountain
Always Welcome

COMPLIMENTS OF
Theo Robertson

Boosters for Bellaire's "Big Reds"

WIN OR LOSE, WE ARE WITH YOU

Farmers and Merchants National Bank

Bellaire, Ohio

— A FRIENDLY BANK —

MEMBER FEDERAL DEPOSIT INSURANCE CORPORATION

COMPLIMENTS OF

A. C. MURPHY
County Engineer

G & J TIRES.

G & J TUBES

**ATLANTIC SERVICE
STATION**

J. E. SCHOEN, Prop.

Phone 9138.

3880 Noble Street

**ATLANTIC MOTOR OIL.
LUBRICATION**

TONY'S

Quality Meat Market

MEATS, GROCERIES, PRODUCE

QUALITY OUR SPECIALTY

WE DELIVER.

PHONE 458

Compliments
of

Ross T. Michener

Prosecuting Attorney

Build a Home...



Or Modernize the Old One

BUT BE SURE

To Come Here For

LUMBER

MILLWORK

AND BUILDERS SUPPLIES

The W. M. Johnson Lumber Co.

Shadyside and Bellaire

Phones 801—1080-J—539

WISE'S BAKERY

Home Type Baking

3252 Guernsey Street. . . Res. Phone 307-J

IN EVENT OF CLAIM OR REMOVAL, NOTIFY

The Kern Insurance Agency,

INCORPORATED

GENERAL INSURANCE

Room 716 — 1st National Bank Bldg.

Telephone 54.

Bellaire, Ohio



Compliments of

ANTON HOICHEVAR

FREEDOM Perfect Motor Oils.

FREEDOM Gasolines

YOUNG'S SERVICE STATION

Cor. 43rd & Noble Streets.

GOODRICH Tires, Tubes & Batteries

Tire Repairs

— **THIS AD WORTH 15c ON LUBRICATION** —

ACCESSORIES

The Ohio Valley Lumber Co.

Bellaire, Ohio

Compliments of

HOWARD DUNFEE

and

The Clerk of Courts Office

L. C. SMITH & CORONA TYPEWRITERS

WHEELING TYPEWRITER EXCHANGE

30 - 14th Street - Phone 892 - Wheeling, W. Va.

Rebuilt Typewriters.

All Standard Makes Repaired.
R. C. Allen and Victor Adding Machines

Rentals

KLEMPA'S MARKET

QUALITY—GROCERIES, VEGETABLES, MEATS—QUALITY

4212 Harrison Street.

Bellaire, Ohio

THE PROGRESSIVE PRINT SHOP

Office Supplies — Good Printing

Phone 539

431 Thirty-third Street.

Bellaire, Ohio

TWENTY-ONE



Dr. C. W. Kirkland
Team Physician



Irwin R. McCarley
Athletic Director



Marian Blind
Equipment Manager



Geo. Brandstroop
Supt. of buildings and grounds. For many years his services have been invaluable to the Bellaire Schools.

Hold That Line--Big Reds!

You can open a hole in that line if you hit it hard enough and have confidence in your ability to make way for the back-field to plow through.

Life is like that.

One way to be able to plow through the adversities of life is to have a savings account that will back you up in time of need.

We welcome your Savings.

The Buckeye Savings & Loan Company

Bellaire, Ohio

Safe

Sound

Secure

Bellaire

SUPPORT---The Big Reds

THEY ARE WINNERS!

SUPPORT---The Buy American Movement

Sales mean jobs if we buy American made merchandise

SUPPORT---Earl R. Lewis

Republican Candidate For

CONGRESS

He favors steady jobs for American workers by keeping out merchandise made in foreign countries.

Relief for every man who needs it. A steady job for every man who is able to work.

WHITE'S COMMUNITY MARKET

GROCERIES, MEATS, POULTRY AND VEGETABLES

YOU WILL LIKE OUR SERVICE

Phones 280 - 281. Corner Forty-third and Harrison Streets

Bellaire's Complete Food Market

IF YOU APPRECIATE

Score Board,	Thuse Meeting Before Ferry Game,
Flag Poles,	With Fireworks,
Loud Speaker,	Gift to Shoe Fund of Bellaire
Football Banquet,	Schools \$150.
Special Trains to Ferry,	St. Johns \$27.

By our record we ask your support to the Big Red Boosters Club. Buy your membership \$1.00 per year.