

---

---

FIVE CENTS THE COPY

NEXT GAME OCT. 8TH—COLLINGWOOD, CLEVE. VS. BELLAIRE

---

---

Game Called at 2:30 O'clock



TILTONSVILLE

(Compiled by the Bellaire Hi-Y Club)

**SOUVENIR SCORE CARD**

OF OHIO  
GOVERNOR



John W. Bricker

ELECT

Seeking Public Office for the First Time

Your Support Earnestly Solicited and Greatly Appreciated

Means Economy For All

# COUNTY AUDITOR

Republican Candidate For

# JAY E. GREEN

*A New Name...A New Face In County Politics*

## YEA, BIG REDS!



ACCROCCO  
Center



Joe Accrocco, our scrappy center has been re-elected as Captain of the 1938 team.

John A. Niemiec attended Bel-  
laire Hi School from 1920 to  
1924. From here he went to  
Notre Dame in 1925 to 1929  
where he obtained an A. B. De-  
gree. From 1930 to 1932 he  
coached Football, Basketball, and  
Baseball at Rice Institute, at  
Houston, Texas. Then from 1932  
to 1934 he coached at Alamo  
Heights Hi School, San Antonio,  
Texas. Prior to coming to Bel-  
laire High he coached at Colum-  
bia College, Dubuque, Iowa,  
coaching football, basketball,  
baseball, and track, from 1934 to  
1938.

NIEMIEC  
Coach



HOWARD A. DUFF  
SHERIFF  
of  
Compliments

BERNARD G. WITTEN  
JUDGE  
of  
Compliments

Residence  
4335 Noble St.  
Bellaire, Ohio  
Reasonable  
Prices

"Once a customer, always  
a customer."

CHARLES STRAHL

Phone  
586-M  
Bellaire, Ohio  
Domestic  
Coal

BELLAIRES

PHONE 97

OHIO

The Cowen-Dickens Company  
INSURANCE SPECIALISTS

BRIDGEPORT 21.

ICE CREAM

# Meadowcrest Dairy

Best By Test

BELLAIRES 220.

DAIRY PRODUCTS

MEMBER FEDERAL DEPOSIT INSURANCE CORP.

THE YOUNG MEN'S BANK

OPEN A CHECK ACCOUNT  
FOR HOME OR BUSINESS

# The Union Savings Bank

Supt. Bellaire Public Schools

J. V. NELSON



The school officials welcome you to the Bellaire Stadium for the home games of 1938. It is your loyal support which makes football a success in Bellaire. The Boys High-Y are especially grateful to all those who have helped to make this program for the games possible through advertising.

Phone  
Bellaire 21

NEFFS, OHIO

Yards At:

and

Phone  
Powhatan 18

POWATAN, OHIO

“IF IT'S TO BUILD WITH WE HAVE IT”

Roofing

Building Block

Cement

Gravel

Sand

Lumber

Refrigerators

Washers

Radios

Stoves

Paints

Hardware

# The Neff Lumber Company

CLIFFORD L. BELT

Judge

COMPLIMENTS OF

Harry L. Albright

Judge

COMPLIMENTS OF

Earl J. Heil Radio and Electric Co.

NORGE AND PHILCO PRODUCTS

"We Sell the Best and Service the Rest"

3281 Belmont Street Phone 462 Belleaire, Ohio

**BELLAIRE HIGH SCHOOL OFFICIAL FOOTBALL SCHEDULE 1938**

SHADYSIDE	Saturday, September 17	Home	PAINESVILLE	Saturday, October 22	Home
BRIDGEPORT	Saturday, September 24	Home	MARTINS FERRY	Saturday, October 29	Away
TILTONSVILLE	Saturday, October 1	Home	NEW PHILADELPHIA	Saturday, November 5	Away
COLLINGSWOOD CLUB	Saturday, October 8	Home	YOUNGSTOWN E.	Saturday, November 12	Home
UNION	Saturday, October 15	Home	WHEELING	Thursday, November 24	Away

COMPLIMENTS OF

**CORRELL PHOTO SERVICE**

FILM SERVICE

Dankworth Bldg.

Phone 92-J

**Exide Batteries**

**Expert Lubrication**

**WHITE ROSE GASOLINE**

Jeffers Bros.

Phone 716-J.

38th and Noble

A reduction of 10% on a pair of \$1.00 or 79c fine  
"Majud" silk hose by bringing this advertisement for  
3 days after any game.

3172 Belmont

at **BLUMS**

**THIS ADVERTISEMENT IS WORTH 10c TO YOU**

<p>Oh! Gee whizz! Look at that score We know it's good! But we want more!!! Baby's in a high chair Who put her there? Ma? Pa? Sai Boom! Bah! Bellaire High School Bah! Bah! Bah! Ash can't Tim can! Who can! Bellaire can! Yeh Bah! Reds!!! We've got a school! We've got a yell!</p>	<p>We've got a team! That fights like! Hit 'em high, Hit 'em low Come on Bellaire! Let's Go!!! Fight! Fight! Big Reds Fight! Fight! Big Reds Come on! Fight!!! Strawberry Shortcake Huckleberry Pie V - I - C - T - O - R - Y</p>	<p>Are we in it? Yes! I guess For there's the team of B. H. S. Yeh! Big Reds!</p>
<p>T - E - A - M T - E - A - M T - E - A - M Fight! Fight! Fight! Yeh Bellaire! Yeh Bellaire! Beat Titonsville!!!</p>	<p>Rah! Rah! Rah! Rah! Bellaire High School! Bellaire High School! Team! Team! Team!</p>	<p>How! Big Reds! How! Big Reds! How! Big Reds! V - I - C - T - O - R - Y</p>

**YELLS!!!**

BELMONT COUNTY RECORDER

# JESSE A. WILSON

Compliments of

McCLAIN MOTOR CO.

THE

Compliments of

**ALBERT VASEK & SON**

GROCERIES AND MEATS

Swift To Serve You

Tele. 570-M 4408 Harrison Street

BELLAIRE, OHIO



County Treasurer

H. J. FINDLEY

of

Compliments

STORE

THE ZWIG FURNITURE

of

Compliments

3242 Belmont Street  
Bellaire

1051 Main Street  
Wheeling

Books Quality Brings Them Back

# BOOK'S SHOES

Books Features Sell People the First Time

Phillips Jewelry Store  
"The City Hall Jewelers"  
Bellaire, O.

Phone 268-J

Jewelers in Bellaire  
Since 1898

GEO. ROBINSON

Compliments  
of

THE HUB

Compliments  
of

CAPITOL AND  
TEMPLE  
THEATERS

Compliments  
of

Clothing  
Furnishings  
Bellaire, Ohio

JOHN HATTALA,  
Tiltonsville, Left Half Back



JOHN MADDEN,  
Tiltonsville, Full Back



JOE JULIAN,  
Tiltonsville, Left Guard

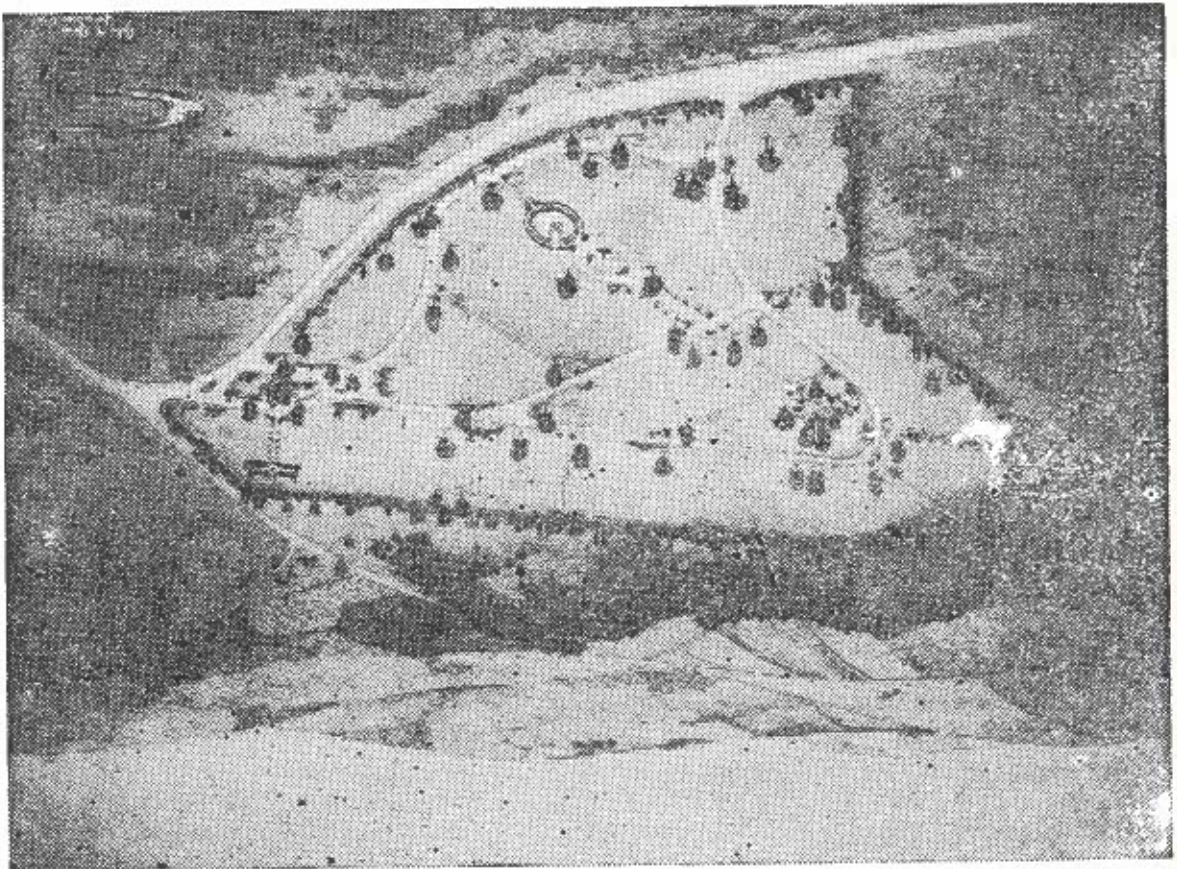


First National Bank Building. Phone 934. Bellaire, Ohio

# Belmont County Memorial Park

We urge you to purchase your burial estate now—before you need it. It will save heartache, eliminate added expense, confusion and worry at time of death.

A Park So Beautiful	Lawn	Type
The New Idea	Low	Costs
Perpetual Care		



Where the Memory of Beautiful Lives will Be Kept Beautiful Always

INVEST IN REST BEFORE  
REST INVESTS IN YOU

I will be pleased to serve you again

**COMMISSIONER**

For County Democratic Candidate

**FULTON**

JAMES M.



**Lawrence E. Imhoff**  
 Democratic Candidate for Reelection to CONGRESS

Comments of



Head Coach—James Vince  
 Assistant—M. J. Haddella  
 Assistant—Ray Beck  
 Manager—Billy Youngman

**MANAGERS**

20	138	Hodick
33	155	Thorn
36	153	Vitzelberger
26	145	Gularek
28	155	Klun
41	130	DeLuca
31	140	Star
35	143	Dobbins
39	143	Pietro
32	158	Ogden

**SUBSTITUTES**

29	142	Brown	L. E.
24	160	Madden	F. B.
21	138	Evans	R. H.
25	135	Hatalle	L. H.
22	125	Rice	Q. B.
23	150	Eoff	L. T.
30	132	Julian	L. G.
	132	Brandt	C.
27	140	Harris	R. G.
40	152	Leonard	R. T.
37	148	Holubeak	R. E.

**TILTONSVILLE LINEUP**

**CHEER LEADERS**  
 Thea Madden  
 Clara Albright  
 Lois Spinetti

**BELLAIRE**  
**TILTONSVILLE**

**Charles**  
 Democratic

Compl



**LOTTOS**  
**OFFICE**  
**KE**

Compliments of  
**John R. Crunelle**  
 (Bellare Hi Graduate)  
 Democratic  
 Candidate  
 For  
 STATE  
 LEGISLATURE  
 (SECOND TERM)



**E. E. TAYLOR**  
 Democratic Candidate  
 for  
**COUNTY AUDITOR**  
 Respectfully Solicits Your  
 Support  
 ON HIS RECORD



2	3	4	Total

ts of  
 awyer  
 idate For  
 NOR

Otis Dunfee  
 Geo. Velt  
 Chas. Lynch  
 Paul Bovenizer

**MANAGERS**

Position	Name	Wt.	No.
R. E.	Robinson	152	32
R. T.	Skorich	170	22
R. G.	Bungardner	151	12
Center	Acerooco	150	13
L. G.	Neff	170	21
L. T.	English	165	15
L. E.	Fitch	176	25
Q. B.	Sadlowski	159	20
R. H. B.	Obejenski	168	30
I. H. B.	Mooney	148	10
F. B.	Rouscher	173	24

**BELLAIRE LINEUP**

**CHEER LEADERS**  
 Ineille Kennedy  
 Barbara Houston  
 Madeline Davis  
 Nina Lantwica  
 Clyde Butter



DUFFY

LS

# NATIONAL COLLEGIATE ATHLETIC ASSOCIATION RULES

## CODE OF SIGNALS FOR OFFICIALS

- Pushing Movement of Hands to Front with Arms Hanging Vertical
- Crawling, pushing or helping runner
- Hands on Hips
- Off-side and violation of kick-off formation.
- Grasping of One Wrist Holding Horizontal Arc of Either Hand
- Player illegally in motion.
- Pushing Hands together after
- Military Salute
- Unnecessary roughness.
- Shoulders with Forward from Pushing Hands
- Interference with forward pass (also pass which touches ineligible player.)
- Both Arms Extended Above Head
- A Score
- Bringing palms of hands together after
- Penalty refused, incomplete pass, play to be replayed, missed goal, etc.
- Folded Arms
- Delay of game or extra time-outs.
- this signal indicates safety. Sitting of hands in vertical plane above head, answers by raising his right hand.
- Sitting of Hands in Horizontal Plane
- Penalty refused, incomplete pass, play to be replayed, missed goal, etc.
- 1. Delay of Game or Extra Time-outs—Folded Arms (see below).
- 2. Chipping—Military Salute, followed by striking the back of the knee with hand.
- 3. Running Into or Roughing the Kicker—Military Salute followed by swinging the leg to simulate a punt.

Waving Hand Behind Back  
 Illegal forward pass.  
**TO OFFICIALS**  
 Additional signals are as follows:

Fancy Groceries and Meats at a Reasonable Price

# CLYDE E. FRY

We Deliver

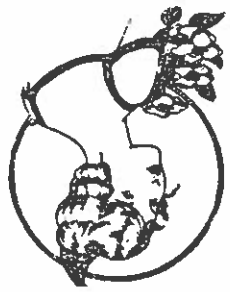
4676 Jefferson Street

Phone 980.



**HAROLD WHITTAKER**  
 For  
 STATE  
 Representative  
 Republican Candidate

GET FLOWERS  
 FOR THE GAME  
 AT



The Capitol Flower Shoppe  
 Bellaire

**T. B. PHILLIPS**  
 County Commissioner

Comments of

FEDERAL DEPOSIT INSURANCE CORP.  
MEMBER

# FIRST NATIONAL BANK IN BELLAIRE

... a personal loan is a sensible, workable plan of financing some existing opportunity of advancement. —this bank has ample funds for personal loans that will meet the requirements co-existent with sane conservative banking principles. —make your application today and let us discuss it with you . . .

## “MONEY TO LOAN”

D. FITCH,  
End



JOHNSON,  
Half Back



D. INNOCENZO,  
Tackle



GRAY,  
Tackle



RADAWECJ  
Center



31st and Hamilton Street.

Phone 345

Sidewalk Material--All Builders Supplies  
BELLAIRE WALLPLASTER CO.

# CAPITOL CONFECTIONERY

With Cigars and Candy You Will Enjoy the Game

# Grafton-Bauknecht-Mellott FUNERAL HOME

Compliments of

No.	Name	No.	Name
28	Conklin, R. E.	10	Mooney, L. H.
30	Objeński, R. H.	11	DeBiasis, L. G.
31	Murray, R. H.	12	Bumgardner, R. G.
32	Robinson, R. E.	13	Acrocco, C.
34	Marklin, L. G.	14	C. Kahl, L. E.
36	V. DiPolo, R. G.	15	English, L. T.
37	D. Innocenzo, R. T.	16	Gray, L. T.
38	Pumpa, R. E.	17	Beck, R. T.
39	Duda, Q. B.	18	Duffy, E. B.
40	Nash, L. H.	19	Havelka, R. G.
42	Adams, F. B.	20	Sadlowski, Q. B.
43	D. Fitch, R. E.	21	Neff, L. G.
44	Newhart, R. T.	22	Skorich, R. T.
45	R. Kahl, R. G.	23	Radewig, C.
77	E. Acrocco, Q. B.	24	Rousher, F. B.
78	Appecella, L. G.	25	K. Fitch, L. E.
80	Marzella, C.	26	Moore, L. G.
29	Johnson, L. H.	27	Porch, Q. B.
55	Kirkland, T.		

Red and White Jersey

# VARSIITY SQUAD



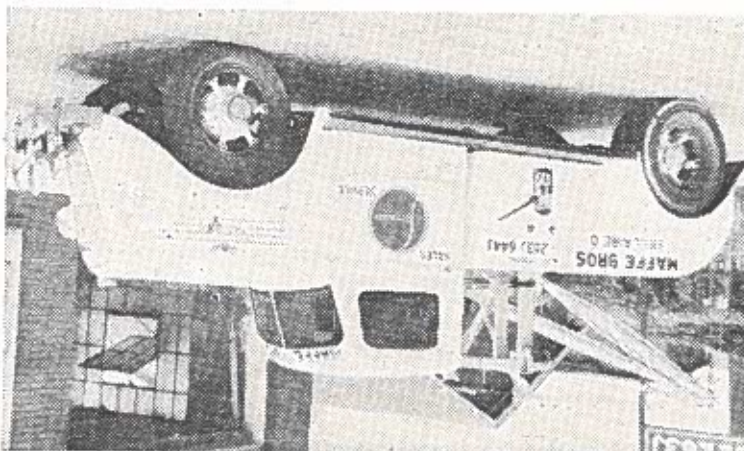
**Higrade Domestic Coal**  
 From Shick Mine  
 Phone Bal. 154  
**Pioneer Fuel Corporation**  
 West Bellaire

Bellaire, O.

1400 Belmont Street.

Phones 263-J-9186-644-J

**MAFFE BROS.**  
**SALES STUDEBAKER SERVICE**



Your Vote and Influence Respectfully Solicited

**REPRESENTATIVE  
STATE  
REPUBLICAN CANDIDATE FOR  
HAROLD P. HOOVER**



**COMMISSIONER  
BELMONT COUNTY**

FOR A FIRST TERM AS

Republican Candidate

**JAMES R. FITTON**

Your Vote Respectfully Solicited

**WM. R. PHILLIPS—Atlantic Service Station  
3277 Guernsey Street, Bellaire**

**ATLANTIC GASOLINE—WILLARD BATTERIES**

Slugging	15 yards	Pushing, pulling, interlocked interference, etc.
Intentionally throwing forward pass to ground	15 yards	Intentionally throwing forward pass to ground
Leaving field during one minute intermission	15 yards	Leaving field during one minute intermission
Man going on field without permission	15 yards	Man going on field without permission
More than one non-playing man going on field	15 yards	More than one non-playing man going on field
Coaching from sidelines	15 yards	Coaching from sidelines
Hurdling, tripping, piling up	15 yards	Hurdling, tripping, piling up
Unsportsmanlike conduct	15 yards	Unsportsmanlike conduct
Defense striking on head, neck or face with palm of hand	15 yards	Defense striking on head, neck or face with palm of hand
Man in motion on shift	15 yards	Man in motion on shift
Interference on forward pass by passing team	15 yards	Interference on forward pass by passing team
Illegal striking with hands, kneeling or kicking	15 yards	Illegal striking with hands, kneeling or kicking
Disqualification and loss of one-half distance to goal	15 yards	Disqualification and loss of one-half distance to goal
Illegal substitution	25 yards and suspension	Illegal substitution
Clipping from behind	15 yards	Clipping from behind
Delay in starting game or second half	25 yards	Delay in starting game or second half
Interference on forward pass by defense	1st down on spot of foul	Interference on forward pass by defense
Forward pass touched by ineligible player	Loss of ball	Forward pass touched by ineligible player
Half distance to goal and disqualification No penalty		Half distance to goal and disqualification No penalty
Offside, both sides	5 yards	Offside, both sides
Holding, etc., by defensive side	5 yards	Holding, etc., by defensive side
Man in motion—no shift	5 yards	Man in motion—no shift
Crawling	5 yards	Crawling
Taking out time more than three times during half	5 yards	Taking out time more than three times during half
Running into kicker	5 yards	Running into kicker
Substitute failing to report	15 yards	Substitute failing to report
Unreasonable delay in putting ball in play	5 yards	Unreasonable delay in putting ball in play
Starting forward before ball	5 yards	Starting forward before ball
Fair catch, taking more than two steps	5 yards	Fair catch, taking more than two steps
Attempt to draw opponents offside	5 yards	Attempt to draw opponents offside
Interference with opponents before ball is in play	5 yards	Interference with opponents before ball is in play
Using flying block or flying tackle	5 yards	Using flying block or flying tackle
Neutral zone, encroachment on	5 yards	Neutral zone, encroachment on
Player out of bounds	5 yards	Player out of bounds
Illegal use of hands and arms by offense	15 yards	Illegal use of hands and arms by offense
Interference with fair catch, etc.	15 yards	Interference with fair catch, etc.
Roughing kickers	15 yards	Roughing kickers
Substitute communicating before first play	15 yards	Substitute communicating before first play
Unnecessary roughness	15 yards	Unnecessary roughness

**KNOW THE PENALTIES**

**A. C. MURPHY**  
**County Engineer**

COMPLIMENTS OF

MEMBER FEDERAL DEPOSIT INSURANCE CORPORATION

— A FRIENDLY BANK —

Bellaire, Ohio

**Farmers and Merchants National Bank**

WIN OR LOSE, WE ARE WITH YOU

**Boosters for Bellaire's "Big Reds"**

After the game visit  
**Dankworth's Fountain**  
Always Welcome

**Theo Robertson**

COMPLIMENTS OF

3252 Guernsey Street, . . Res. Phone 307-J

Home Type Baking

# WISE'S BAKERY

Telephone 54. Belleaire, Ohio

Room 716 — 1st National Bank Bldg.

GENERAL INSURANCE

INCORPORATED

The Kern Insurance Agency,

IN EVENT OF CLAIM OR REMOVAL, NOTIFY

Phones 801-1080-J-539

Shadyside and Belleaire

The W. M. Johnson Lumber Co.

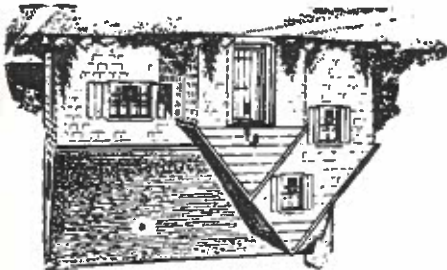
AND BUILDERS SUPPLIES

LUMBER MILLWORK

To Come Here For

BUT BE SURE

Or Modernize the Old One



## Build a Home...

Prosecuting Attorney

# Ross T. Michener

of

Compliments

WE DELIVER. PHONE 458

QUALITY OUR SPECIALTY

MEATS, GROCERIES, PRODUCE

Quality Meat Market

## TONY'S

LUBRICATION

ATLANTIC MOTOR OIL.

Phone 9138. 3880 Noble Street

J. E. SCHOEN, Prop.

STATION

## ATLANTIC SERVICE

G & J TIRES. G & J TIRES



Compliments of

ANTON HOCHÉVAR

FREEDOM Perfect Motor Oils. FREEDOM Gasolines

YOUNG'S SERVICE STATION

Cor. 43rd & Noble Streets.  
GOODRICH Tires, Tubes & Batteries

Tire Repairs — THIS AD WORTH 15c ON LUBRICATION — ACCESSORIES

The Ohio Valley Lumber Co.

Bellaire, Ohio

Compliments of

HOWARD DUNFEE

and

The Clerk of Courts Office

L. C. SMITH & CORONA TYPEWRITERS

WHEELING TYPEWRITER EXCHANGE

30 - 14th Street - Phone 892 - Wheeling, W. Va.

All Standard Makes Repaired.  
R. C. Allen and Victor Adding Machines

Rentals

Rebuilt Typewriters.

KLEMPA'S MARKET

QUALITY—GROCERIES, VEGETABLES, MEATS—QUALITY

4212 Harrison Street. Bellaire, Ohio

THE PROGRESSIVE PRINT SHOP

Office Supplies — Good Printing

Phone 539

Bellaire, Ohio

431 Thirty-third Street.

Safe

Sound

Secure

Bellaire, Ohio

# The Buckeye Savings & Loan Company

We welcome your Savings.

You can open a hole in that line if you hit it hard enough  
 and have confidence in your ability to make way for the back-  
 field to plow through.  
 Life is like that.  
 One way to be able to plow through the adversities of life  
 is to have a savings account that will back you up in time of  
 need.

## Hold That Line--Big Reds!

Attended Martins Ferry High  
 School and later starred at John  
 Carroll University.

Tiltonsville Coach

JAMES VINCE



NEWHART,  
 Tackle



NASH,  
 Half Back



CONKLIN,  
 End



Relief for every man who needs it. A steady job for every man who is able to work.  
He favors steady jobs for American workers by keeping out merchandise made in foreign countries.

---

---

# CONGRESS

Republican Candidate For

**SUPPORT--Earl R. Lewis.**

---

---

**SUPPORT--The Buy American Movement**  
Sales mean jobs if we buy American made merchandise

---

---

THEY ARE WINNERS!

**SUPPORT--The Big Reds**

Bellaire

---

---

By our record we ask your support to the Big Red Boosters Club. Buy your membership \$1.00 per year.

- Score Board,
- Flag Poles,
- Loud Speaker,
- Football Banquet,
- Special Trains to Ferry,
- These Meeting Before Ferry Game,
- With Fireworks,
- Gift to Shoe Fund of Bellaire
- Schools \$150.
- St. Johns \$27.

IF YOU APPRECIATE

Bellaire's Complete Food Market

Phones 280 - 281. . . . . Corner Forty-third and Harrison Streets

YOU WILL LIKE OUR SERVICE

**WHITE'S COMMUNITY MARKET  
GROCERIES, MEATS, POULTRY  
AND VEGETABLES**