

**BIG  
REDS**

**Twentieth  
Annual  
Thanksgiving  
Game**



**BELLAIRE  
vs.  
WHEELING**

**WHEELING  
STADIUM**

**Nov. 30, 1933  
2:30 P. M.**

**Price  
10c**

**BRINK-  
MEN**

Have Your Insurance Written  
by Those Who Know How

**The Cowen-Dickens Company**  
**INSURANCE** **BELLAIRE, O.**

**REED ROSSER'S**

**Just Wonderful Eats!**

**HIRSCH'S for Premier Student Suits**

Best Made at \$21.00 and \$25.00

We Invite Comparison

**ABILITY PLUS STRENGTH  
MAKES A GOOD FOOTBALL TEAM**

The same combination makes

**The Buckeye Savings  
and Loan Company**  
OF BELLAIRE, OHIO

**A Good Place for Savings**

Our 1934 Christmas Club Will Open Soon  
Resources Nearly \$5,000,000.00

# HOW THEY STAND

| WHG. |             | OPP. | BELL. |               | OPP. |
|------|-------------|------|-------|---------------|------|
| 14   | Bridgeport  | 0    | 26    | Shadyside     | 0    |
| 15   | Warwood     | 6    | 27    | Tiltonville   | 6    |
| 10   | Weirton     | 12   | 13    | Bridgeport    | 0    |
| 19   | Fairmont    | 0    | 13    | Linsly        | 0    |
| 0    | Union       | 6    | 13    | Union         | 0    |
| 7    | Morgantown  | 12   | 6     | Martins Ferry | 0    |
| 12   | Triadelphia | 0    | 25    | Mingo         | 0    |
| 6    | Parkersburg | 6    | 0     | Weirton       | 6    |
| 0    | Linsly      | 0    | 34    | Moundsville   | 0    |

Coach ..... Everett Brinkman  
 Asst. Coach ..... C. C. Kraus  
 Asst. Coach ..... C. C. Phipps  
 Manager ..... Wm. Bowers  
 Asst. Managers.. Serig, Ward, Buchanan

Coach ..... Bartley Rutan  
 Student Manager Herman Martin (Sr.)  
 Assistant Coach ..... Steve Polinsky  
 Faculty Manager .. Irvin R. McCarley

## Basketball Season

We Are Ready With Everything for the Game, Including

### Converse Basketball Shoes

卐 卐 卐

All the Lines Are Now Complete in Our

**CHRISTMAS ANNEX**

One Door South of Our Store

Toys for the Kiddies and Useful Gifts  
 for the Older Folks

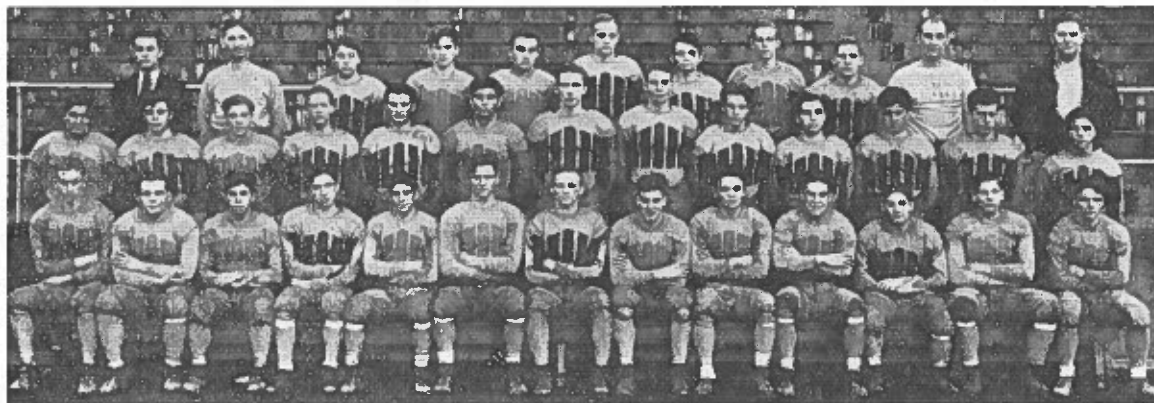
## The Keyser Hdw. Co., Inc.

“The Complete Hardware Store”

3254 Belmont Street

Telephone 999

# WHEELING TEAM



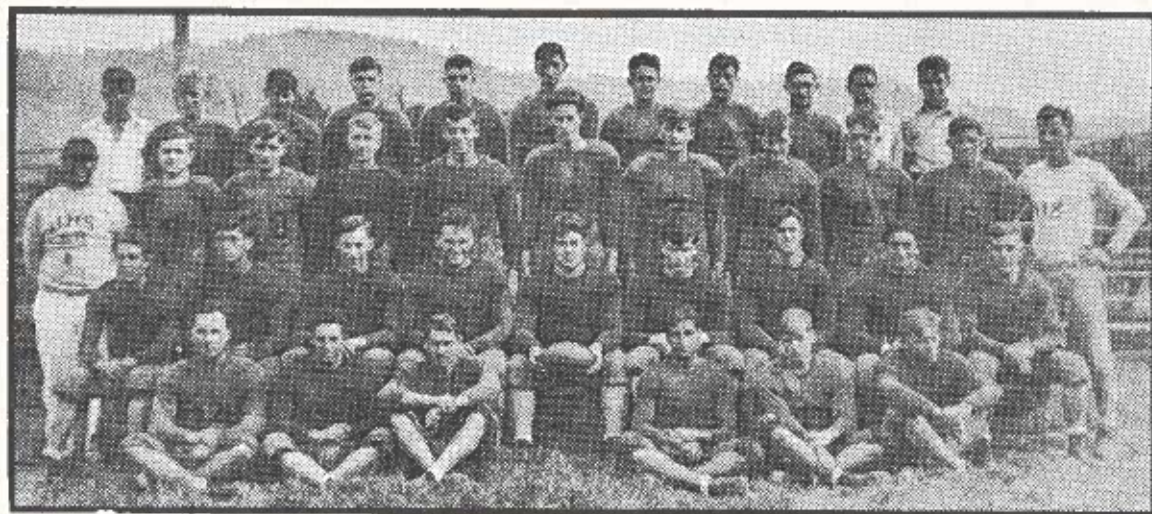
First row, reading from left to right: Bucon, Venskoske, Di Bias, W. Voyda, Talbert, Wojcik, Lisak, Mullen, Jasko, Wilson, Sailer, Weiss, Raper.

Second row: Spatafore, Snyder, Mullarkey, Porter, Kasman, Stefanow, Lucker, Ulrich, Swesey, Callendine, Di Bias, V. Rickards, Pinion.

Third row: Manager Bowers, Assistant Coach Phipps, Weisgerber, Coulter, Hanlon, Ruble, Golberg, Wolf, Bero, Assistant Coach Kraus, Coach Brinkman.



# BELLAIRE TEAM



Bottom row, left to right—Vovak, Mange, Mass, Zuglan, Hennessy, Hill.

Second row, left to right—Vanella, Sitar, Mendelson, Jones, Capt. Heil, Corbett, Accrocco, Ansinelli, Nardo.

Third row—Rutan (Coach), Sykes, Sherman, Dixon, Lovejoy, Toban, Niemiec, Montgomery, Kirkland, Brilski, Polinsky (Asst. Coach).

Top row—Coach Dixon, St. John, Dickerhoff, Ferrante, Matusek, Martin, Dubois, Iams, Ingram, Martin, Smith, Mgr.

Cigars, Tobaccos and  
20 Brands of Cigarets

TOM MOOR

# Golds

Everett Brinkman, Coach

| No. | Name        | Wgt. |
|-----|-------------|------|
| 2   | Oliver      | 130  |
| 1   | Hanlon      | 140  |
| 3   | Bucon       | 159  |
| 3   | Coulter     | 120  |
| 2   | Malantinske | 169  |
| 3   | Wolf        | 145  |
| 4   | Stefanow    | 157  |
| 3   | Raper       | 140  |
| 1   | Mullen      | 147  |
| 2   | Ulrich      | 150  |
| 3   | Sailer      | 142  |
| 4   | Wojick      | 170  |
| 6   | Weisgerber  | 127  |
| 8   | Weiss       | 188  |
| 9   | Swesey      | 137  |
| 0   | DiBias, V.  | 145  |
| 1   | Wilson      | 145  |
| 2   | Callendine  | 155  |
| 3   | Talbert     | 135  |
| 4   | Spatafore   | 185  |
| 6   | Mullarkey   | 143  |
| 7   | Jasko       | 140  |
| 3   | Lucker      | 165  |
| 0   | Richards    | 147  |
| 1   | Voyda       | 150  |
| 2   | Lisak       | 146  |
| 3   | DiBias      | 160  |
| 4   | Bero        | 131  |
| 5   | Ruble       | 145  |
| 3   | Pinion      | 120  |
| 7   | Snyder      | 135  |
| 3   | Hudacek     | 145  |
| 3   | Venskoste   | 211  |
| 3   | Porter      | 140  |
| 1   | Kasman      | 161  |
| 2   | Goldberg    | 142  |

# WHEELING

Wheeling Public School Stadium,

O  
Warren Pugh  
Paul Ruble  
Lee Spillers, W

Lisak  
R. H.

Bucon  
R. E.

Venskoste  
R. T.

Sailer  
R. G.

Montgomery  
L. E.

Jones  
L. T.

Novak  
L. G.

Zuglan  
L. H.

Wheeling Cheerleaders  
Edwin Craig, Head  
Cheerleader  
Edwin Conaway  
Jack Kalkreuth  
Standford Smith

|          |        |
|----------|--------|
| BELLAIRE | 1<br>○ |
| WHEELING | ○      |

**SPEAR BROS. INC.**

Suggest That You Use

# FLEET-WING LUBI

FOR EASIER STARTING—SMOOTHER PERFORMANCE  
LOWER UPKEEP COSTS

# BROS. LEN

Best Line of Box  
Chocolates in the City

## BELLAIRE

y, November 30, 1933, 2:30 P. M.

S  
lkins, Referee  
J., Umpire  
Head Linesman

ko

Talbert-Hudacek  
L. H.

Di Bias  
L. G.

Weiss  
L. T.

Raper  
L. E.

Sitar  
R. G.

Heil  
R. T.

Corbett  
R. E.

Mass  
R. H.

| 3 | 4 | Total |
|---|---|-------|
| 0 | 0 | 0     |
| 0 | 0 | 0     |

Bellaire Cheerleaders

Bert Minemeyer

Alex Borrell

Emory Kilgore III

## Reds

Bartley Rutan, Coach

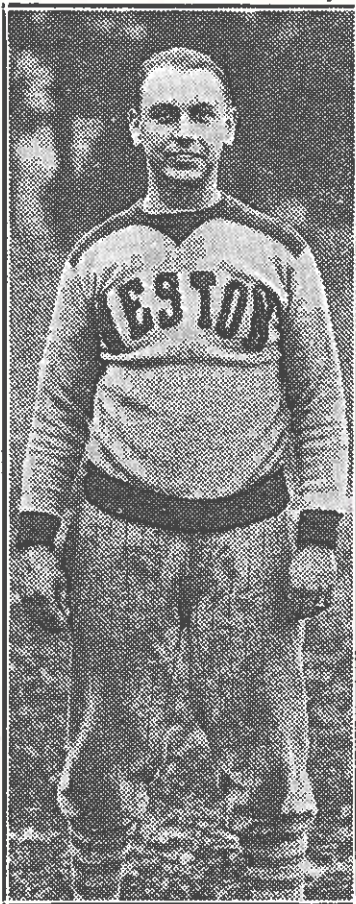
| No.  | Name       | Wg |
|------|------------|----|
| 3    | Hennessy   | 13 |
| X 5  | Novak      | 15 |
| X 6  | Niemiec    | 16 |
| X 9  | Mendelson  | 16 |
| 10   | Sherman    | 16 |
| X 15 | Mange      | 14 |
| 16   | Brilski    | 15 |
| 19   | Hill       | 13 |
| 20   | Dixon      | 14 |
| 22   | Sykes      | 16 |
| X 23 | Corbett    | 16 |
| 25   | Lovejoy    | 17 |
| 26   | Tobin      | 17 |
| X 30 | Montgomery | 14 |
| X 31 | Ansinelli  | 14 |
| X 32 | Nardo      | 14 |
| X 33 | Sitar      | 16 |
| 34   | Kirkland   | 15 |
| X 35 | Mass       | 14 |
| X 36 | Vanella    | 14 |
| X 37 | Jones      | 18 |
| X 38 | Accrocco   | 16 |
| X 39 | Zuglan     | 13 |
| X 40 | Heil       | 19 |

## EATING GASOLINE

INSTANT LUBRICATION—LONGER CAR LIFE AND  
REGULAR GASOLINE PRICES.

Phone Wheeling 345

**15** SERVICE STATIONS  
IN THE WHEELING DISTRICT



**COACH RUTAN**

For four years Coach Bartley Rutan has turned out football teams for the Red and Black that have rarely returned on the short end of the score. Coach Rutan has shown the community that the teams fight hard and fairly and we, the community and the

student body of Bellaire High school, back him to the limit. He has given the residents of Bellaire athletic teams that are always to be reckoned with when the final valley standings are hung up.

The job of coaching the line has been ably handled by Coach Steve Polinsky as testified by looking over previous games in which the Big Reds have competed, and Wenzell Morris has been highly successful with the tutoring of the freshman eleven.

**HOT  
TURKEY  
DINNERS**

at

**THE BELMONT  
RESTAURANT**

Bellaire, Ohio

**THE  
K  
ARMELKORN  
SHOP**

1323½ Market St.

**A Big Bag for 5c**

**COMPLIMENTS**

**OF A**

**FRIEND**



OFFICE SUPPLIES

STATIONERY

CIGARS AND TOBACCO

## BELLAIRE NEWS AGENCY

E. O. Meder, Proprietor

DISTRIBUTORS OF NEWSPAPERS AND MAGAZINES

City Building

Phone 9135

Bellaire, Ohio



COACH KRAUS



COACH PHIPPS

Coach Everett Brinkman came from Benwood High school where he enjoyed notable success to take over the fortunes of the Wheeling High school eleven, this season. Coach Brinkman, a graduate of the school, has the wishes of all Wheeling fans for success at his Alma Mater. The new coach's teams have always been known for their aggressiveness and sportsmanship.

Coach C. C. Kraus assists him in coaching the line. He was formerly head coach at Buckhannon, came to Wheeling from that city in 1929. Coach Phipps has been assistant to the head coach for ten years.

## Take Your Prescription to a HOGE - DAVIS DRUG STORE

They Are Filled by Registered Pharmacist Only

For the Best Meals in the City Stop At The

## Fort Henry Smoke House

Genuine  
Turtle  
Soup

1509 Market St.  
Wheeling, W. Va.  
Home Cooking

Home Made  
Chili  
Con Carne

# SONGS & YELLS

## BELLAIRE

Boost for Bellaire High  
(Chorus)

Joyous and ever loyal, let us boost for  
Bellaire High,

Let every voice ring, let every heart  
sing.

There's no time to grieve or sigh;

It's ever onward, our course persuing.

May defeat ne'er our ardor cool,

But united we will boost for her,

Bellare High School

Hit 'em high,

Hit 'em low

Come on Bellaire,

Let's go.

## WHEELING

The Old Gold and Blue  
(Alma Mater)  
(Chorus)

It's the Old Gold and Blue that we love,  
It's the Old Gold and Blue that makes  
us cheer;

It's the Old Gold and Blue that we love,  
If we are far off, if we are near;

May they wave above forever,

And it's to them we'll be true;

We'll give three hearty cheers, then.

For the Old Gold and Blue!

Gold, Gold, Gold and Blue!

Gold, Gold, Gold and Blue!

Wheeling High

Men of Might

Fight! Fight! Fight!

## SCORES OF PAST GAMES

| Year  | Whg. | Bell. |
|-------|------|-------|
| 1905  | 6    | 0     |
| 1905* | 10   | 0     |
| 1906  | 20   | 0     |
| 1912  | 0    | 0     |
| 1913  | 0    | 0     |
| 1914  | 6    | 16    |
| 1915  | 6    | 6     |
| 1916  | 13   | 0     |
| 1917  | 12   | 0     |
| 1918  | 0    | 6     |
| 1919  | 0    | 18    |
| 1920  | 0    | 7     |
| 1921  | 0    | 0     |
| 1922  | 20   | 0     |
| 1923  | 12   | 0     |
| 1924  | 0    | 38    |
| 1925  | 6    | 7     |
| 1926  | 7    | 12    |
| 1927  | 2    | 0     |
| 1928  | 6    | 7     |
| 1929  | 7    | 6     |
| 1930  | 0    | 0     |
| 1931  | 0    | 13    |
| 1932  | 7    | 27    |

Number won by Wheeling, 9; Number won by Bellaire, 10; Number of ties, 5.

\*Two games played this year.

## GRIEST CUT RATE

PARKER PENS AND PENCILS

1125 Market St., Wheeling

303 Jefferson Ave, Moundsville

734 Charles St., Wellsburg

L. C. SMITH & CORONA TYPEWRITERS  
Rentals—Special Student Rates

**WHEELING TYPEWRITER EXCHANGE**

30—14th Street—Phone 892—Wheeling, W. Va.  
Rebuilt Typewriters—All Standard Makes Repaired

WHEELING'S GIFT SHOP FOR MEN

**C. HESS & SONS**

**MEN'S WEAR**

1321-23 Market Street

**OLMSTEAD BROS. CO.**

**PAPER**

1413-1415 MAIN ST.

WHEELING, W. VA.

After the Game

**CHAS. E. LYNN**

**RESTAURANT**

14th and Market St., Wheeling

*Wheeling's Original Credit Jewelers*

**KING'S**

**1322 MARKET STREET**

A  
Sure  
Winner  
At  
All  
Times

*Book's Shoes*

**BELLAIRE**  
3242 Belmont St.

**WHEELING**  
1051 Main St.