

**WHEELING HIGH SCHOOL**

---

vs.

**BELLAIRE HIGH SCHOOL**

---



**Annual  
Football  
Game**



**THANKSGIVING DAY**

**1921**



HERE'S WHAT HE WANTS  
FOR CHRISTMAS

A MEMBERSHIP IN THE Y. M. C. A.

A REAL GIFT FOR THE BOY OR YOUNG MAN

It means "Off the streets"—games with fellows worth while. Rosy cheeks, health and happiness, and a broad winning smile. It's worth all it costs. Gives the right inspiration. Builds body and mind—and a good reputation. THINK DAD!

ASK FOR RATES AT THE

Y. M. C. A.

DOLLAR SAVINGS & TRUST CO.  
1315-1317 MARKET STREET  
WHEELING, W. VA.

THE officers of this bank have long experience and training.

Their advice and counsel upon financial matters is available, and throughout the bank courteous individual attention is assured.

*Provide for the Future*

A Savings account at our bank that can be added to week by week, month by month, soon grows to surprising proportions and is the finest form of family protection.

*Start one today with a dollar.*



L. MILLICK  
Photo by Goetze



S. KRONJAEGER  
Photo by Goetze



R. MOYES  
Photo by Goetze

AUTOMOBILE  
ACCESSORIES

**EARLE ROGERS CO.**

**4 STORES**

Elm Grove Store, 335 Natl Rd.  
Main Store, Main & Twelfth Sts.  
Glenwood Store, 113 Natl Rd.  
Island Store, 22 Zane St.

**4 STORES**

PASSENGER CARS and SPEED WAGONS



REO DISTRIBUTING CO., INC.

37-43 TWENTIETH STREET

PHONE 167

WHEELING, W. VA.

WHEELING BAKERY

1022 MARKET STREET

WHEELING, W. VA.

THE BUNS SOLD ON THIS FIELD

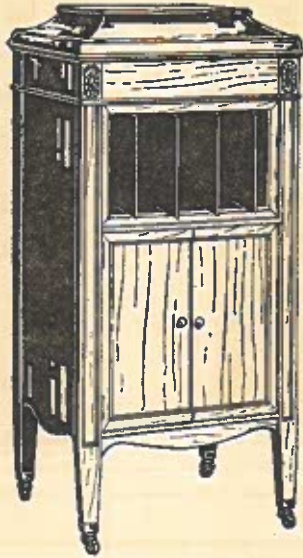
WERE FURNISHED BY US.

---

OUR CAKES, PIES AND PASTRY

# CHRISTMAS CLUB

Remember the Place  
28 ELEVENTH STREET



TALKING MACHINES

\$1.00 Down and \$1.00 Per Week

See Our Window Display

We Do Not Charge Interest

SELECT YOUR MACHINE NOW FOR CHRISTMAS

BURKHAM & STAMM PIANO CO.

28 ELEVENTH STREET



**C. HIXENBAUGH**  
Photo by Goetze



**E. BRINKMAN**  
Photo by Goetze

**WHITMAN'S**

and

**PAGE & SHAW**

**CANDIES**

**BAER'S DRUG STORES**

# IF WHEELING WINS

# FREE

We're rooting for Wheeling High to win this important game of the year--and will give OUR FAMOUS HOT CHOCOLATE FREE to every person who presents the Coupon "Wheeling Won"-provided they do win. and here's hoping they do.

Coupon can be presented anytime up to Thursday Dec. 1st  
NOT LATER

**WHEELING  
WON**

## THE MEL-R GARDEN

*"Down the Marble Stairs"*

Wheeling Steel Corp. Building

## PUTS PEP INTO THE FOOT BALL GAME

When They Eat

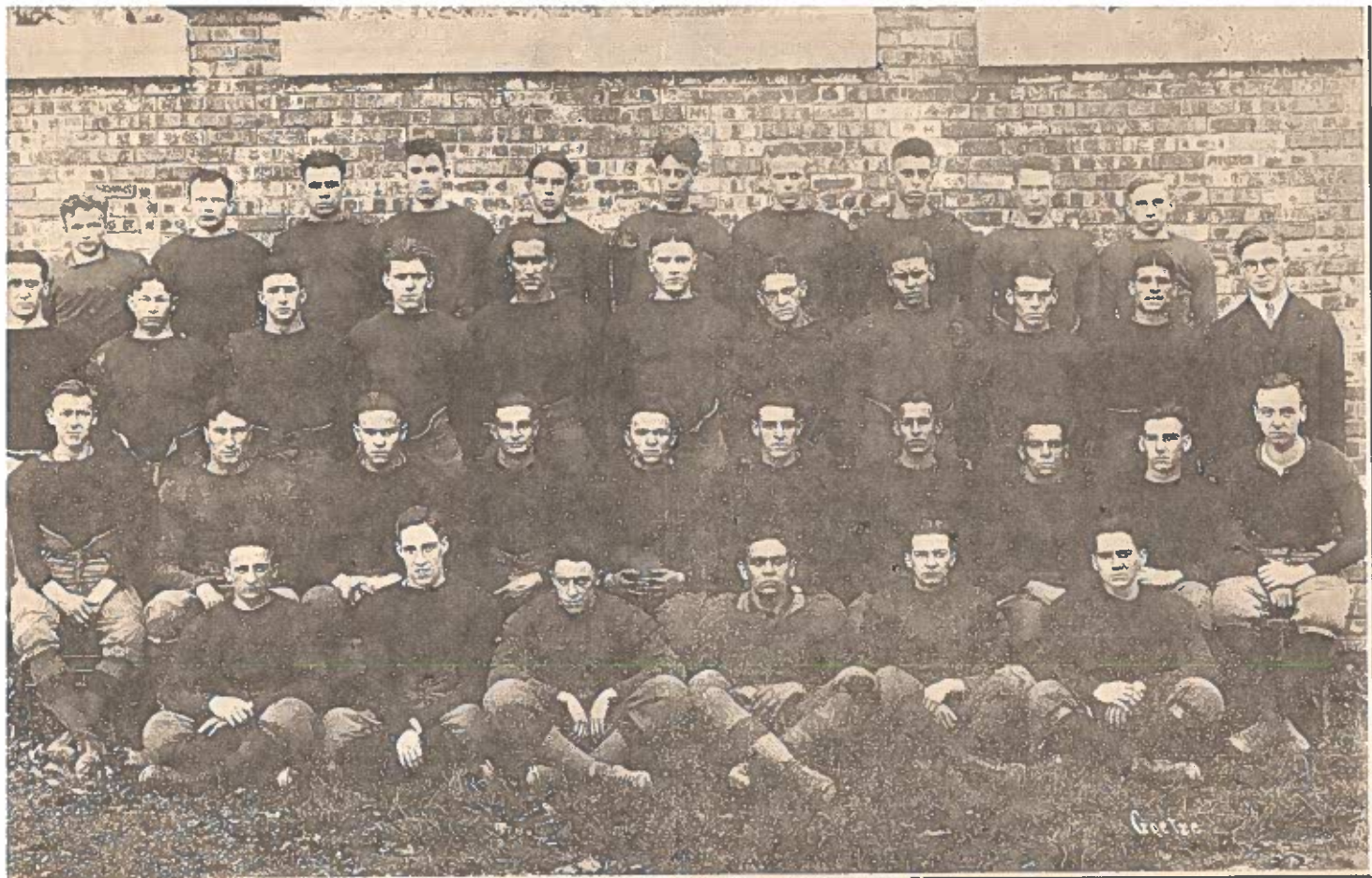
## SUPERIOR BREAD

Made Fresh Every Hour

## SUPERIOR BAKERY

1109 MARKET STREET





by Goetze

### WHEELING FOOTBALL SQUAD

Back row, left to right—R. Watkins, McCuskey, Craig, Harris, Fleming, Boreland, Harpfer, Sauvageot, McGill, Seabright.  
 Second row—Ross, coach; Robinson, Moyes, Kronjaeger, Wagener, Neibur, Thomas, Winschell, G. Heiner, Efthemes, Wheeler, student mgr.  
 Third row—Spring, Hixenbaugh, Brinkman, Ulrich, Munas, captain; Carroll, Mott, C. Heiner, May, Weis.  
 Front Row—Millick, D. Watkins, Kline, Tinklev, Crowther, Cotton.



C. CARROLL  
Photo by Goetze



L. ANDERSON  
Photo by Goetze



T. COTTON  
Photo by Goetze

E. A. Spangler, Prop'r.

Phone 1820-J

## SPANGLER CIGAR STORE

ROGERS HOTEL BUILDING

WHEELING, W. VA.

FULL LINE OF XMAS NOVELTIES

**OUR COLORS  
LIKE OUR FOOTBALL TEAM  
ARE FAST AND RELIABLE**

**THE J. R. GREENLEE COMPANY**

**PAINTS, GLASS and WALL PAPER**

**3371-3-5 Belmont St.**

**Phones 765 and 766**

**BELLAIRE, OHIO**

**GRAHAM MARSH**

**PIANO INSTRUCTOR**

**Leschetizki Method Taught**

Pupil of  
Harry Rowe Shelley  
Clarence Adler  
Franklyn Carnahan

**ORGANIST and CHOIR MASTER  
FOURTH STREET M. E. CHURCH**

**STUDIO**

**303 EGERTER BUILDING**

**1107 MARKET STREET**

The Next Time You Have  
Your Shoes Repaired

Try

# THE SHOE HOSPITAL

WHEELING & BELLAIRE'S BIGGEST & BEST  
SHOE REPAIR FACTORIES

1045 MAIN ST.

3345 BELMONT ST.

OUR WORK STANDS THE TEST

WE RECOMMEND

NEOLIN SOLES

THEY WEAR LONGER THAN LEATHER

LADIES: YOUR GOOD SHOES SHOULD BE CLEANED AND  
POLISHED BY THE SHOE SHINING EXPERTS AT OUR WHEELING  
SHOP



**GALBERACH, Bellaire Coach**

Photo by Goetze



**C. ROBINSON Captain Bellaire Team**

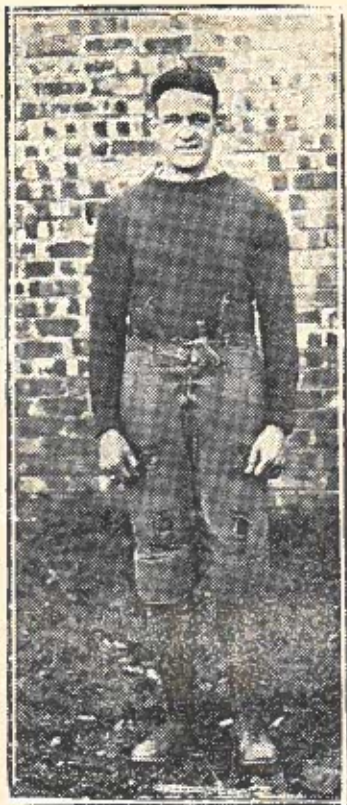
## RAU'S

11th and Market Streets

**THE PLACE TO PURCHASE YOUR GIFTS**

**WE HAVE A COMPLETE LINE TO SELECT FROM**

<b>Kodaks</b>	<b>Perfume</b>	<b>Pocketbooks</b>
<b>Stationery</b>	<b>Toilet Sets</b>	<b>Hand Bags</b>
<b>Ivory</b>	<b>Safety Razors</b>	<b>Military Sets</b>
<b>Atomizers</b>	<b>Fountain Pens</b>	<b>Electric Toasters</b>
<b>Electric Hot Plates</b>	<b>Electric Vibrators</b>	



**H. THOMAS**  
Photo by Goetze



**ROSS, Coach**  
Photo by Goetze

## WHITE SWAN LAUNDRY

EVERY ARTICLE WASHED WITH SOFT WATER

TELEPHONE 2008-2009

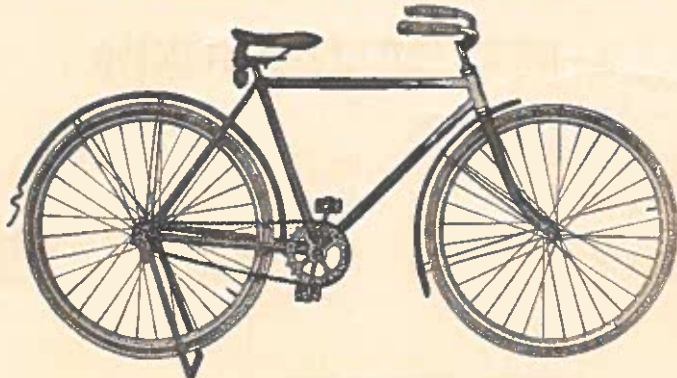
WHEELING, W. VA.

**USE UNITED DAIRY  
MILK AND CREAM**

**PHONE 3870**

**138 SIXTEENTH STREET**

**COMPLETE LINE TOYS  
BASKET BALL TOGS  
SPALDING  
STALL & DEAN SWEATERS  
EVERYTHING IN SPORTING GOODS**



**H. C. FRIEDRICHS**

# COURT THEATRE

WHEELING'S ONLY FIRST CLASS PLAYHOUSE

NOW PLAYING—John L. Golden's

## “THREE WISE FOOLS”

THURSDAY, FRIDAY and SATURDAY, WITH SATURDAY MATINEE

One of the finest comedies of the season.

**ALL NEXT WEEK—Twice Daily—2:20 and 8:20**

The Greatest Screen Production of the Age

## “THE THREE MUSKETEERS”

With DOUGLAS FAIRBANKS and A WONDERFUL CAST

12 REELS OF ACTION AND SPLENDOR

**All Seats Reserved**

Matinees, 25c, 50c, 75c

Nights, 50c, 75c, \$1.00, \$1.50

“PAINT THAT LOOKS BETTER

AND WEARS LONGER”

## H. E. CALDABAUGH



WHOLESALE AND RETAIL



PAINTERS' AND BUILDERS' SUPPLIES

1058 MARKET STREET



REMEMBER  
THE ADVERTISERS  
WHOSE ADS IN THIS BOOK  
HELPED MAKE IT POSSIBLE

---

PATRONIZE THEM

SPECIFY

BELLAIRE PLASTER

FOR YOUR NEW HOME

BELLAIRE WALL PLASTER CO.

## WHEELING HIGH SCHOOL FOOT BALL TEAM—1921

Name	Position	Number	Weight
H. Thomas	R. H.	7	144
C. Heiner	L. H.	8	138
G. Munas, Capt.	Q. B.	5	137
R. Moyes	F. B.	6	137
E. Brinkman	L. E.	19	152
H. Robinson	L. T.	15	145
C. Carroll	L. G.	13	137
J. Niebur	C.	11	165
D. May	R. G.	14	135
S. Kronjaeger	R. T.	16	154
P. Mott	R. E.	9	139

### Substitutes—

H. Sauvageot	T.	10	145
C. Hixenbaugh	F. B.	4	150
T. Cotton	H. B.	21	130
D. Watkins	L. E.	17	135
G. Heiner	R. E.	23	133
L. Anderson	L. G.	20	148
F. Harris	R. G.	22	154
F. Wagner	R. T.	12	177
W. Ulrich	L. T.	18	144
L. Millick	R. E.	25	131

## SCORES OF

1907	Wheeling
1908	No game
1909	No game
1910	Wheeling
1911	Wheeling
1912	Wheeling
1913	Wheeling
1914	Wheeling
1915	No game
1916	Wheeling
1917	Wheeling
1918	Wheeling
1919	Wheeling
1920	Wheeling

Total Points

Games played, 11.

Wheeling      Won 5

Bellaire      Won 4

OF 1

REFEREE—Chester B.

UMPIRE—W. W. McK  
Pa.

HEAD LINESMAN—F.  
Pittsburgh, Pa.

## WHEELING'S RECORD OF GAMES IN 1921

Wheeling	20	Warwood	0
Wheeling	41	Cameron	6
Wheeling	3	Parkersburg	6
Wheeling	14	Charleston	7
Wheeling	29	Clarksburg	13
Wheeling	10	Linsly	0
Wheeling	6	New Martinsville	0
Total Points	123		32

# S C O

	FIRST QUARTER	SECO QUAR
WHEELING.		
BELLAIRE.		

## PREVIOUS YEARS

Bellaire 0

Bellaire 0

Bellaire 0

Bellaire 0

Bellaire 0

Bellaire 16

Bellaire 0

Bellaire 0

Bellaire 6

Bellaire 18

Bellaire 7

---

47

Lost 4                      Tied 2

Lost 5                      Tied 2

## RESULTS

vs. (Tufts), Pittsburgh, Pa.

vs. (Pittsburgh), Elizabeth,

C. Rugh, (Gettysburg),

## BELLAIRE HIGH SCHOOL FOOTBALL TEAM—1921

Name	Position	Number	Weight
C. Robinson, Capt.	R. H.	7	158
J. Niemiec	L. H.	14	160
S. Valloric	Q. B.	18	130
J. Polisky	F. B.	3	170
C. Snider	L. E.	9	135
A. McMasters	L. T.	17	180
D. Buttitta	L. G.	4	140
E. Trisler	C.	12	136
T. Garret t.	R. G.	2	155
M. Koehnline	R. T.	10	164
W. Harris	R. E.	8	132

### Substitutes—

J. Orin		13	130
R. Tiber		1	152
A. Robinson		5	170
C. Maloney		11	145
A. Matthews		16	130

## RESULTS

### BELLAIRE'S RECORD OF GAMES IN 1921

Bellaire	0	Burgettstown	0
Bellaire	7	Washington	6
Bellaire	68	Zanesville	0
Bellaire	34	Sistersville	0
Bellaire	48	Triadelphia	0
Bellaire	30	Marietta	7
Bellaire	7	Martins Ferry	0
Bellaire	27	Lisbon	0
Bellaire	28	East Liverpool	0
Total Points	249	Opponents	13

THIRD  
QUARTER

FOURTH  
QUARTER

TOTAL

“CRONE IS KNOWN”

## CHIROPRACTIC MEANS HEALTH

For every condition, there must be a cause.

Chiropractic removes that cause of your trouble and nature makes you well. Thousands are returning to health through Chiropractic. Why not you.

INVESTIGATE TODAY.

**G. FRANK MALIN, D. C., Ph. C.**

**Doctor of Chiropractic**

This book was designed  
and printed by the artists of



**MORRIS PLAN CO. OF WHEELING**  
**SEVENTEEN ELEVENTH STREET**

---

Our Savings Plan at 5% interest on all deposits will please you. Call on us for information.

---

Equal courtesy and consideration to all, whether a small or large depositor or borrower.



*"Better Clothes for Less"*  
**Exclusive Clothiers**



**D. MAY**  
Photo by Goetze



**J. NEIBUR**  
Photo by Goetze

**STAHL & HOFMANN**

**FRESH & SMOKED MEATS, BUTTER, EGGS & POULTRY**

**Stalls 10 and 12 Market Auditorium**

**Phone 2221**

**HOT DOGS SOLD ON THE FIELD**

**FOR**  
**LOCAL & LONG DISTANCE HAULING**

**SEE**

**J. E. MILLER**

**Office—No. 8 Twelfth Street—Phone 514**

**WHEELING, WEST VA.**

**PARADISE RESTAURANT**

**1435 MARKET STREET—Upstairs**

**THE PLACE TO EAT AFTER THE GAME**

**PRICES ARE RIGHT**

**We assure you that our service will please you—not to**

**say a thing about our variety of well-cooked foods**



## BELLAIRE FOOTBALL SQUAD

Upper row—Galberach, coach; Garrett, Koehline, A. Robinson, Trisler, Tiber, C. Robinson, captain; Poliski, Maloney, Niemic, Masters, Snider.



MORE ATTRACTIVE  
THAN FINE PICTURES-  
ARE OUR  
MODERN  
BATHROOM  
FIXTURES



## **BATHROOM FIXTURES**

The bath room fixtures that we sell are works of Art. They are made to look well and wear well for a long period of time. Our pottery utilities are furnished us by celebrated manufacturers who stand behind their nationally advertised products.

**SCHOFIELD & COWL**

23 TENTH STREET

## **FRAZIER**

**SUPERIOR**

### **CUSHION CORD TIRES**

**ARE STRUCTURALLY DIFFERENT**

**GUARANTEED 10,000 MILES**

**NO BLOWOUTS**

**NO RIM CUTS**

**NO STONE BRUISES**

**THE TIRE THAT SATISFIES**

**FRAZIER SUPERIOR CUSHION CORD TIRE CO.**

# W. A. WILSON & SONS

1409-11-21 MAIN STREET

PAINTS — VARNISHES

WINDOW GLASS — ORNAMENTAL GLASS

AUTOMOBILE PAINTS and ENAMELS

BUILDERS' HARDWARE — NAILS

WIND SHIELDS — AUTO FREEZING SOLUTIONS

WHITE LEAD — LINSEED OIL

CARDINAL CLEANERS — BRASS POLISHES

PAINTERS' and BUILDERS' SUPPLIES

# W. A. WILSON & SONS



F. WAGNER  
Photo by Goetze



F. HARRIS  
Photo by Goetze



H. ROBINSON  
Photo by Goetze



## PARISIAN IVORY

### THE GIFT IDEAL

There are many Beautiful and Dainty Gifts—that are sensible, useful and necessary appointments for the feminine dressing table.

We have these articles in the following designs: DuBarry, Fairfax, La-Belle, Rosemont, Pyralin and Fiberloid.

And at CUT PRICES

TOILET WATERS and PERFUMES in ORIGINAL BOTTLES  
and in BULK

YOU ARE SURE TO FIND YOUR FAVORITE ODOR

GRIEST'S CUT RATE.

**HILL BROS. DENTISTS**

**1044 MAIN STREET**

**WHEELING,**

**W. VA.**

**STRATFORD MAGNESIA SPRINGS CO.**

**1213 MAIN STREET**

**PHONE 91 WHEELING**

**DRINK STRATFORD SPRINGS BEVERAGES**

**THEY ARE PURE**

## SCORING

Touchdown .....	6 Points
Goal from Touchdown .....	1 Point
Goal from Field .....	3 Points
Safety by Opponents .....	2 Points

## DEFINITIONS

### Touchdown

A touchdown is made when the ball, lawfully in possession of a player, is declared dead by the Referee, any part of it being on, above or behind the opponents' goal line.

### Touchback

A touchback is made when the ball, in possession of a player guarding his own goal is declared dead by the Referee, any part of it being on, above, or behind the goal line, provided the impetus which sent it to or across the line was given by an opponent.

### Safety

A safety is made when the ball in possession of a player guarding his own goal is declared dead by the Referee, any part of it being on, above or behind the goal line, provided the impetus which caused it to pass from outside the goal line to or behind the goal line was given by the side defending the goal.

## PENALTIES FOR USUAL VIOLATIONS

### Loss of 5 Yards—

Off side.

Failure of substitute to report.

Holding by defensive side.

### Loss of 10 Yards—

Intentional throwing of forward pass to ground.

### Loss of 15 Yards—

Substitute communicating with player before ball is put into play.

Rushing, pulling or holding by side in possession of ball.

Piling up, tripping, hurdling, unsportsmanlike conduct.

### Loss of Half Distance to Goal Line.

Illegal return to game.

Player disqualified for striking, kneeling, kicking opponents, etc.

### Loss of a "Down"—

Incomplete forward pass.

### Loss of Ball—

Failure to advance ball 10 yards in 4 downs.

Ball kicked out of bounds, unless touched.

The Two Leaders

W. H. S. FOOT BALL TEAM

AND

Willard Storage Batteries

New and Service Batteries for All Makes of Cars

YOURS FOR SERVICE

Williamson Service Station

Phone 1653

1521 Chapline St.

**"THE PROGRESSIVE DRUG STORES"**

CUT RATE

ON

**PATENT MEDICINES and TOILET ARTICLES**

**HOGE-DAVIS DRUG CO.**

—Five Stores—

1034 Main  
16th and Market

1145 Market  
25th and Chapline

Wheeling

# Y. W. C. A. GIRLS!

**HERE IS A WISH FOR YOUR HEALTH!**

**WHAT IS IT?**

**JUST THIS:**

**That you will take a course in the Health Education  
Department of the Young Women's Christian Asso-  
ciation this year!**

---

---

**WHAT WILL BE THE RESULT**

**GOOD RECREATION**

**BETTER HEALTH**

**BEST TIMES**

---

---

**CHRISTMAS IS NEAR**

**Ask Santa Claus for \$2.50 for a course in Gymnasium  
work, or \$3.00 for a course in Aesthetic Dancing.**

**For further information, call Wheeling 1426, and ask for**

ROBERT Z. SHEPPARD  
HARRY T. CLOUSE • •



**Sheppard *and* Clouse**  
**SPORTING GOODS**

no. 30 Twelfth St.  
Wheeling, W. Va.

ANNOUNCING THE OPENING OF  
WHEELING'S NEWEST AND LARGEST  
**SPORTING GOODS STORE**

FOOTBALL

TENNIS

GYMNASIUM

BASEBALL

GOLF

BASKETBALL

**SUPPLIES**



VISIT OUR TOY DEPARTMENT

WEST VIRGINIA'S  
LARGEST SPORTING  
GOODS STORE